

Network Services

Wireless Network Services

[Back to the Knowledge Base](#)

OSU Wireless-Network: Setup for Windows 7

Article: KB02580 Published: 2012-05-03 Last modified: 2012-08-02

OSU Wireless-Network: Setup for Windows 7

Want to skip manually configuring your device? Run the [configuration utility](#) to automatically configure your device!

The following instructions apply to Windows 7. If you have ever attempted to connect this device to OSU Wireless, follow these removal instructions first.

1. Go to **Start> Control Panel> Network and Internet > Network and Sharing Center>** and then select **Manage Wireless Networks** from the panel on the left.
2. Select any instances of **osuwireless**, **osuguest** and **attwifi** from the list and then press the **Remove** button.

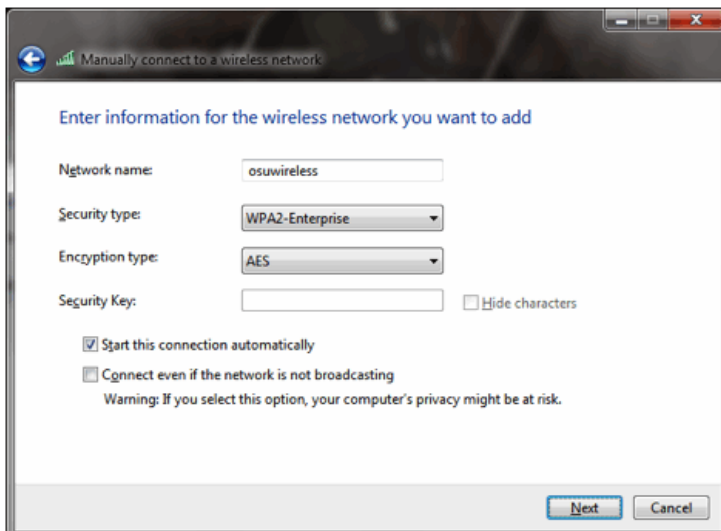
After 'osuwireless,' 'osuguest' and 'attwifi' have been removed, follow the configuration steps below to connect to 'osuwireless' successfully.

Configuration

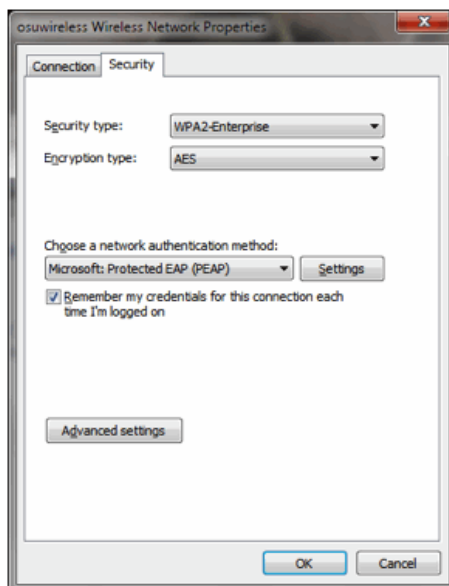
1. Click on the **Start Menu**, then **Control Panel**
2. Under the "Network and Internet" section, click **View network status and tasks**

If you are in the Classic control panel view, double-click **Network and Sharing Center**

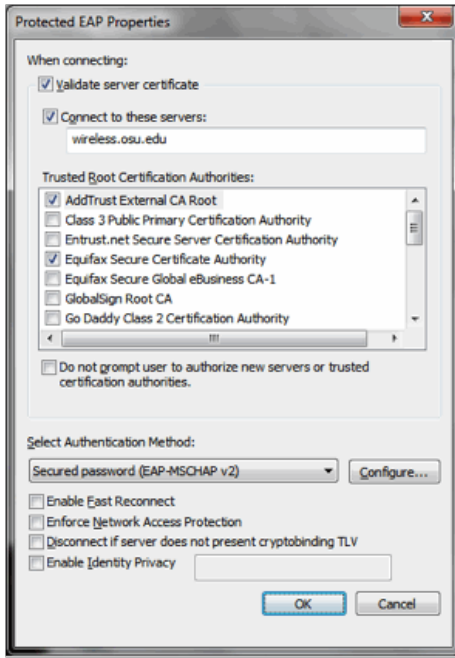
3. Click **Manage Wireless Networks** at the left.
4. Click **Add**.
5. Click the **Manually create a network profile** button.
6. Enter the network connection information:
 1. Network name: **osuwireless**.
 2. Security type: **WPA2-Enterprise**. Do not to select WPA2-Personal.
 3. Encryption type: **AES**.



7. Click **Next**.
8. Click **Change Connection Settings**.
9. Click on the **Security** tab.
 1. Choose **Microsoft: Protected EAP (PEAP)** from the "Choose a network authentication method" menu.
 2. Click **Advanced settings**.
 - Check the **Specify authentication mode** checkbox and choose **User authentication**.
 - Click **OK**.



3. Click **Settings...**
 - Check the "**Validate server certificate**" checkbox.
 - Check the "**Connect to these servers:**" checkbox and type **wireless.osu.edu**.
 - Under "Trusted Root Certificate Authorities", check the **AddTrust External CA Root** and **Equifax Secure Certificate Authority** checkboxes.
4. Under "Select Authentication Method", select **Secured password (EAP-MSCHAP v2)**.
5. Uncheck the **Enable Fast Reconnect** checkbox.
6. Press **Configure...**
7. Uncheck the **Automatically use my Windows logon name and password (and domain if any)** checkbox.



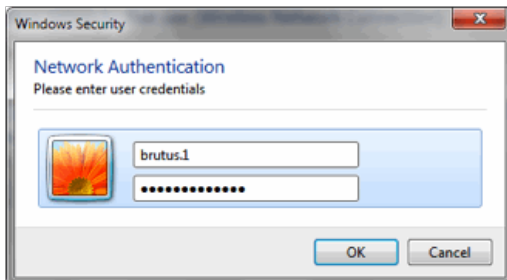
8. Click **Ok** two (2) times then click **Close**.

Your computer should now be configured to authenticate to the OSUWireless network.

What To Expect When You First Connect

When the computer is on and inside an osuwireless coverage area, a balloon will pop up in the lower right corner of the screen that says "Additional information is required to connect to osuwireless".

- Click on the balloon.
- A login screen will appear.
- Enter your **Ohio State Username** (lastname.#) and **password**. Leave the **Logon domain** blank and then click **OK**.



You may be asked to accept a certificate the first time you connect. If so, the certificate will be named **wireless.osu.edu**.

In the **Validate Server Certificate** window that appears, select **View Server Certificate** and verify the certificate name is **wireless.osu.edu**. If it is not, someone may be trying to steal your data! Click **Cancel** and contact the IT Service Desk **immediately**.

If the certificate name is **wireless.osu.edu**, click **OK** to accept.

Your computer should connect and show a balloon with the status of the connection. For more information on OSU Wireless, see <http://wireless.osu.edu>.

For Agents:

Feedback:



Was this helpful?

Yes No

Rated 5.00



Permalink: https://osuitsm.service-now.com/selfservice/kb_view.do?sysparm_article=KB02580 Views: 656

This page is maintained by: Office of the Chief Information Officer | 025 Central Classroom | 2009 Millikin Road | Columbus, Ohio 43210
Contact: IT Service Desk | Phone: 614-688-HELP (4357) | TDD: 614-688-8743

If you have trouble accessing this page and need to request an alternate format, contact 8help@osu.edu.
©2012, The Ohio State University