



United States Department of Agriculture
National Agricultural Statistics Service

Acreage Graphics

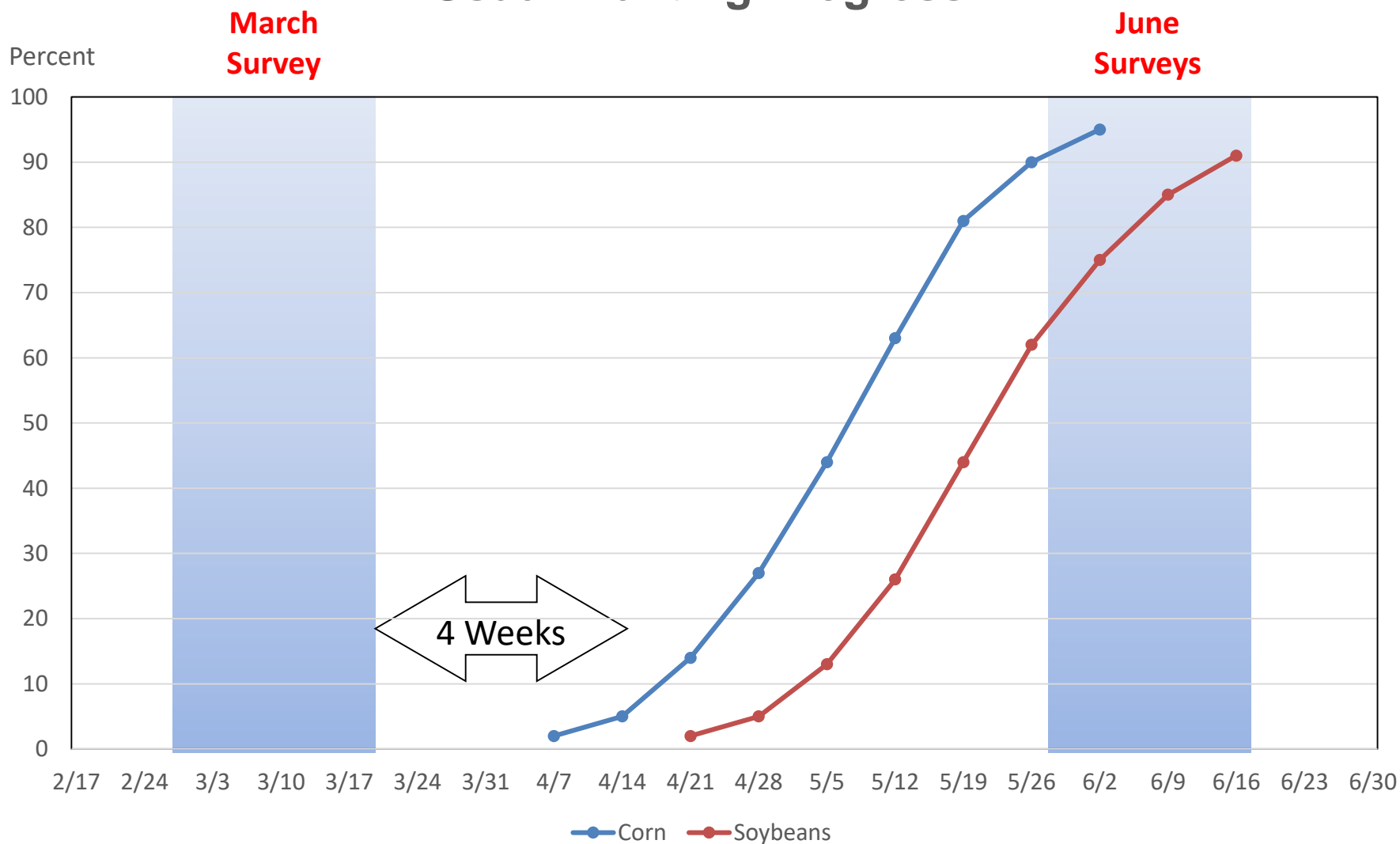
August Crop Production

Lance Honig, Chief
Crops Branch

August 12, 2019

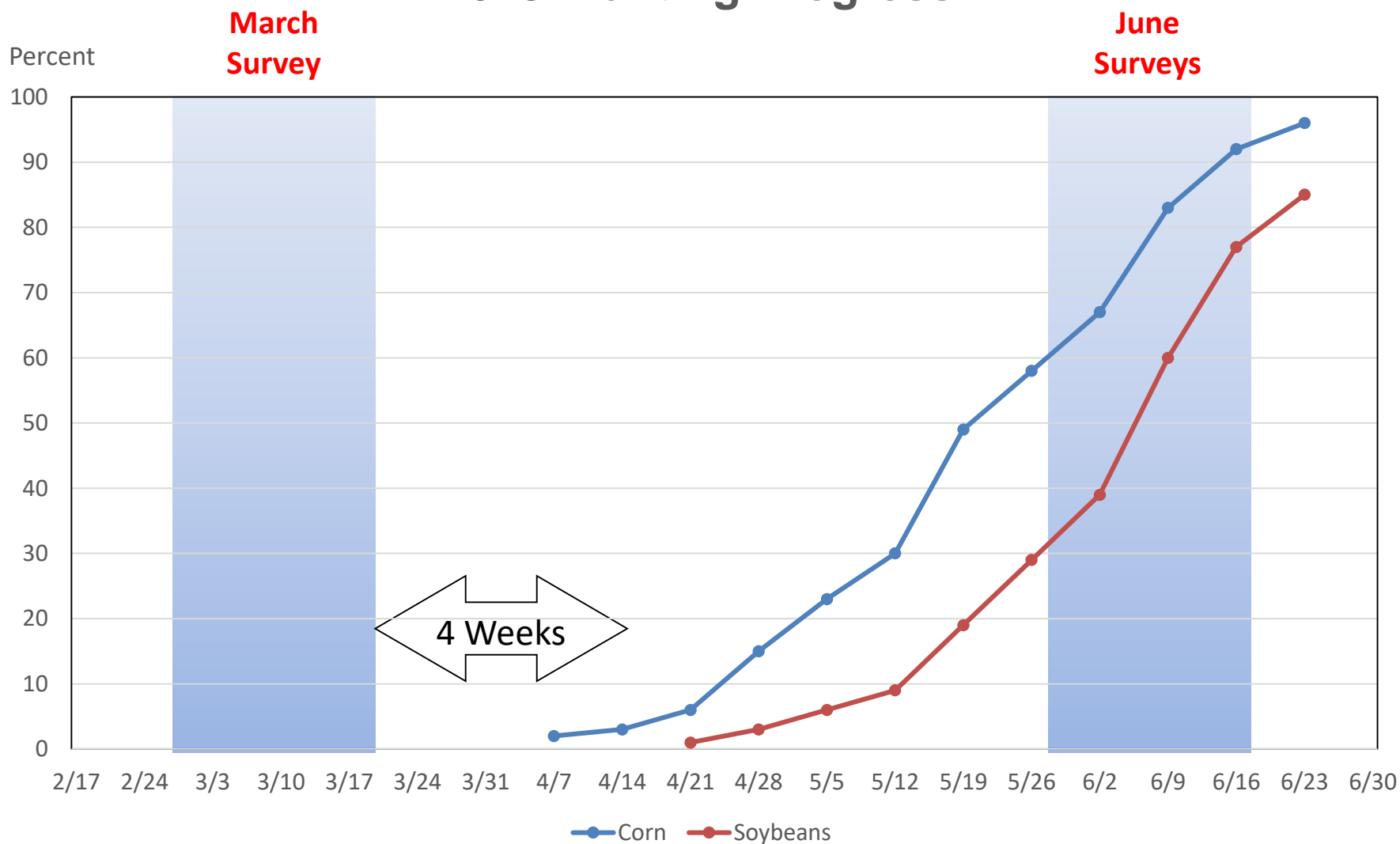
Acreage Intentions vs. Actual Planted Acres

Usual Planting Progress



Acreage Intentions vs. Actual Planted Acres

2019 Planting Progress





CORN ACREAGE

What is Included in NASS Estimates



To assist users who may have questions about what is included in NASS corn acreage estimates, the table below documents whether or not acres are included for a number of scenarios. NASS procedures for inclusion and exclusion are unchanged from previous years.

Scenario Description	Included in NASS Corn Estimates		
	Planted Acres	Grain Harvested Acres	Silage Harvested Acres ^{1/}
Planted and Expected to be Harvested for Grain	Yes	Yes	No
Planted and Expected to be Harvested for Seed	Yes	Yes	No
Planted to Other Crop that Failed, then Planted to Corn and Expected to be Harvested for Grain	Yes	Yes	No
Planted, Failed, Replanted to Corn and Expected to be Harvested for Grain	Yes (Counted Once)	Yes	No
Planted and Expected to be Harvested for Silage	Yes	No	Yes
Planted and Originally Expected to be Harvested for Grain, but Now Expected to be Harvested for Silage	Yes	No	Yes
Took Prevented Plant Claim for Any Crop, Planted Corn as Cover Crop for Silage	Yes	No	Yes
Planted, but Failed	Yes	No	No
Planted and Expected to be Harvested for Hay/Forage	Yes	No	No
Planted, Failed, then Planted to Other Crop	Yes	No	No
Intended to be Planted, Didn't Plant, Took Prevented Plant Claim	No	No	No
Intended to be Planted, Didn't Plant, and Didn't Take Prevented Plant Claim	No	No	No

^{1/} Estimates only published at end of season.



CORN ACREAGE

What is Included in NASS Estimates



To assist users who may have questions about what is included in NASS corn acreage estimates, the table below documents whether or not acres are included for a number of scenarios. NASS procedures for inclusion and exclusion are unchanged from previous years.

Scenario Description	Included in NASS Corn Estimates		
	Planted Acres	Grain Harvested Acres	Silage Harvested Acres ^{1/}
Planted and Expected to be Harvested for Grain	Yes	Yes	No
Planted and Expected to be Harvested for Seed	Yes	Yes	No
Planted to Other Crop that Failed, then Planted to Corn and Expected to be Harvested for Grain	Yes	Yes	No
Planted, Failed, Replanted to Corn and Expected to be Harvested for Grain	Yes (Counted Once)	Yes	No
Planted and Expected to be Harvested for Silage	Yes	No	Yes
Planted and Originally Expected to be Harvested for Grain, but Now Expected to be Harvested for Silage	Yes	No	Yes
Took Prevented Plant Claim for Any Crop, Planted Corn as Cover Crop for Silage	Yes	No	Yes
Planted, but Failed	Yes	No	No
Planted and Expected to be Harvested for Hay/Forage	Yes	No	No
Planted, Failed, then Planted to Other Crop	Yes	No	No
Intended to be Planted, Didn't Plant, Took Prevented Plant Claim	No	No	No
Intended to be Planted, Didn't Plant, and Didn't Take Prevented Plant Claim	No	No	No

^{1/} Estimates only published at end of season.

Questions: Contact Lance Honig, Crops Branch Chief - Lance.Honig@usda.gov

Updated: August 9, 2019



SOYBEAN ACREAGE

What is Included in NASS Estimates



To assist users who may have questions about what is included in NASS soybean acreage estimates, the table below documents whether or not acres are included for a number of scenarios. NASS procedures for inclusion and exclusion are unchanged from previous years.

Scenario Description	Included in NASS Soybean Estimates	
	Planted Acres	Harvested Acres
Planted and Expected to be Harvested for Beans	Yes	Yes
Planted and Expected to be Harvested for Seed	Yes	Yes
Planted to Other Crop that Failed, then Planted to Soybeans and Expected to be Harvested for Beans	Yes	Yes
Planted, Failed, Replanted to Soybeans and Expected to be Harvested for Beans	Yes (Counted Once)	Yes
Took Prevented Plant Claim for Any Crop, Planted Soybeans as Cover Crop for Hay	Yes	No
Planted, but Failed	Yes	No
Planted and Expected to be Harvested for Hay/Forage	Yes	No
Planted, Failed, then Planted to Other Crop	Yes	No
Intended to be Planted, Didn't Plant, Took Prevented Plant Claim	No	No
Intended to be Planted, Didn't Plant, and Didn't Take Prevented Plant Claim	No	No

Questions: Contact Lance Honig, Crops Branch Chief - Lance.Honig@usda.gov

Updated: August 9, 2019

https://www.nass.usda.gov/Education_and_Outreach/Understanding_Statistics/index.php

Principal Crops Planted Acreage

United States

Year	Principal Crops	Change From Previous Year
	<i>Million Acres</i>	
2010	315.4	-3.6
2011	314.3	-1.1
2012	324.3	+10.0
2013	324.9	+0.6
2014	326.7	+1.7
2015	319.1	-7.6
2016	319.0	-0.1
2017	318.3	-0.6
2018	319.6	+1.2
2019	304.7	-14.9

CORN PLANTED AREA

	August 1 FSA Acres ¹	Final FSA Acres ¹	Latest NASS Acres		NASS Minus August 1 FSA		NASS Minus Final FSA
	<i>Million Acres</i>	<i>Million Acres</i>	<i>Million Acres</i>		<i>Million Acres</i>		<i>Million Acres</i>
2011	88.306	88.864	91.936		3.630		3.072
2012	93.008	94.070	97.291		4.283		3.221
2013	88.771	92.399	95.365		6.594		2.966
2014	83.322	86.505	90.597		7.275		4.092
2015	83.147	85.143	88.019		4.872		2.876
2016	90.365	91.066	94.004		3.639		2.938
2017	86.832	87.361	90.167		3.335		2.806
2018	85.770	86.398	89.129		3.359		2.731
2019	85.871		90.005		4.134		
			Average		4.623		3.088

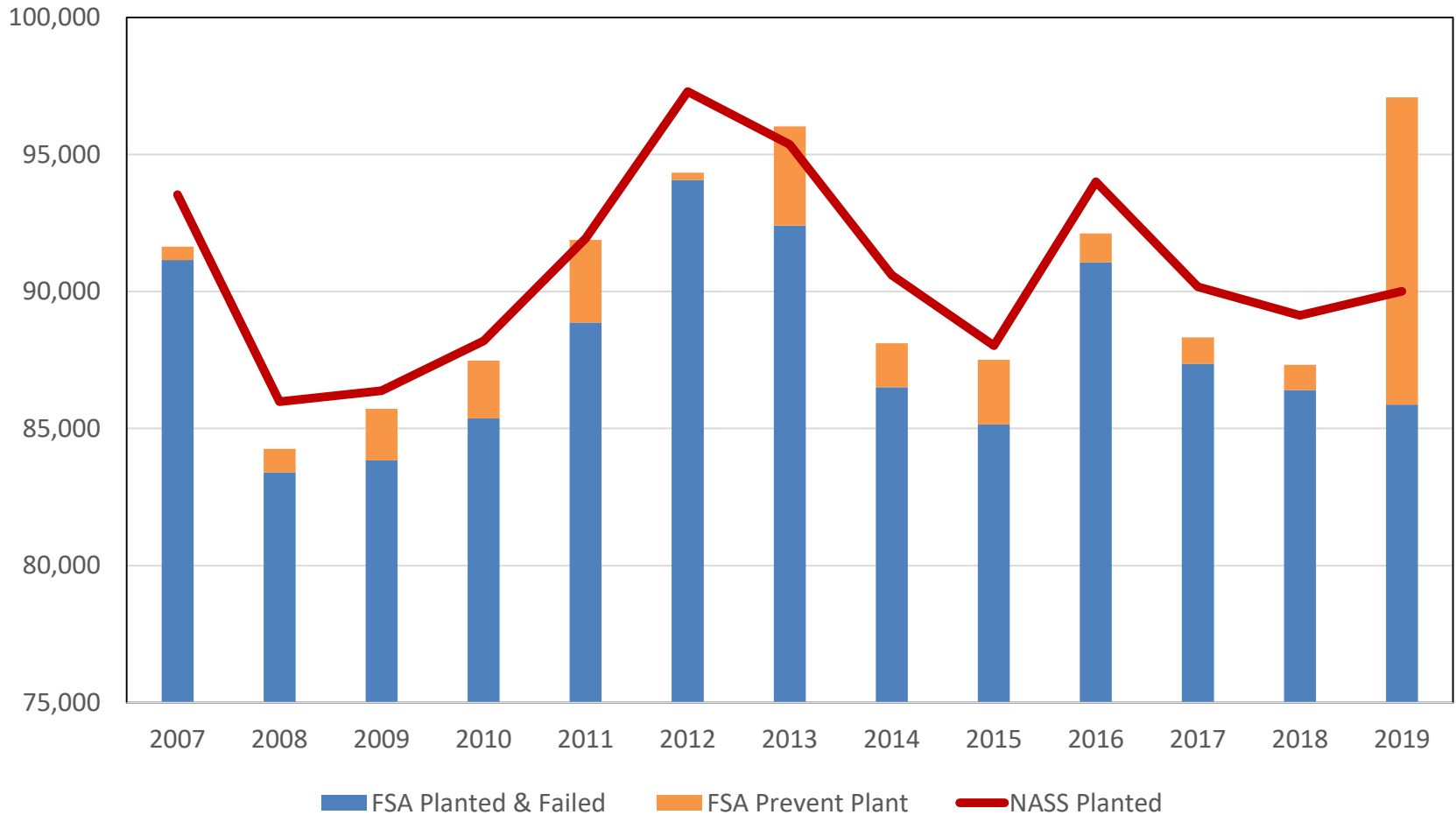
¹ Published on FSA Website

August 12, 2019

Corn Planted Acres - United States

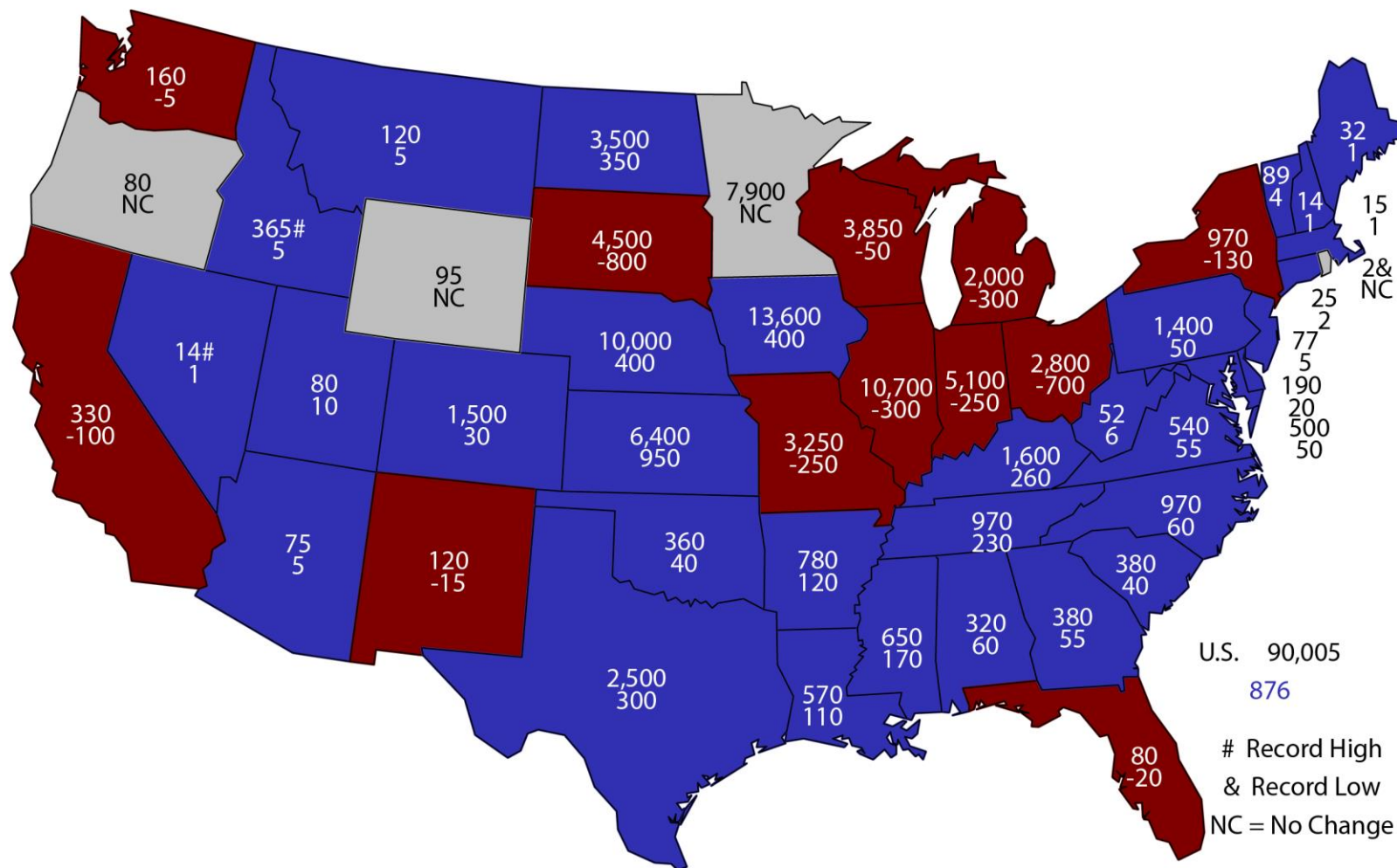
Thousand Acres

FSA Planted & Failed, Prevent Plant, & NASS Estimate



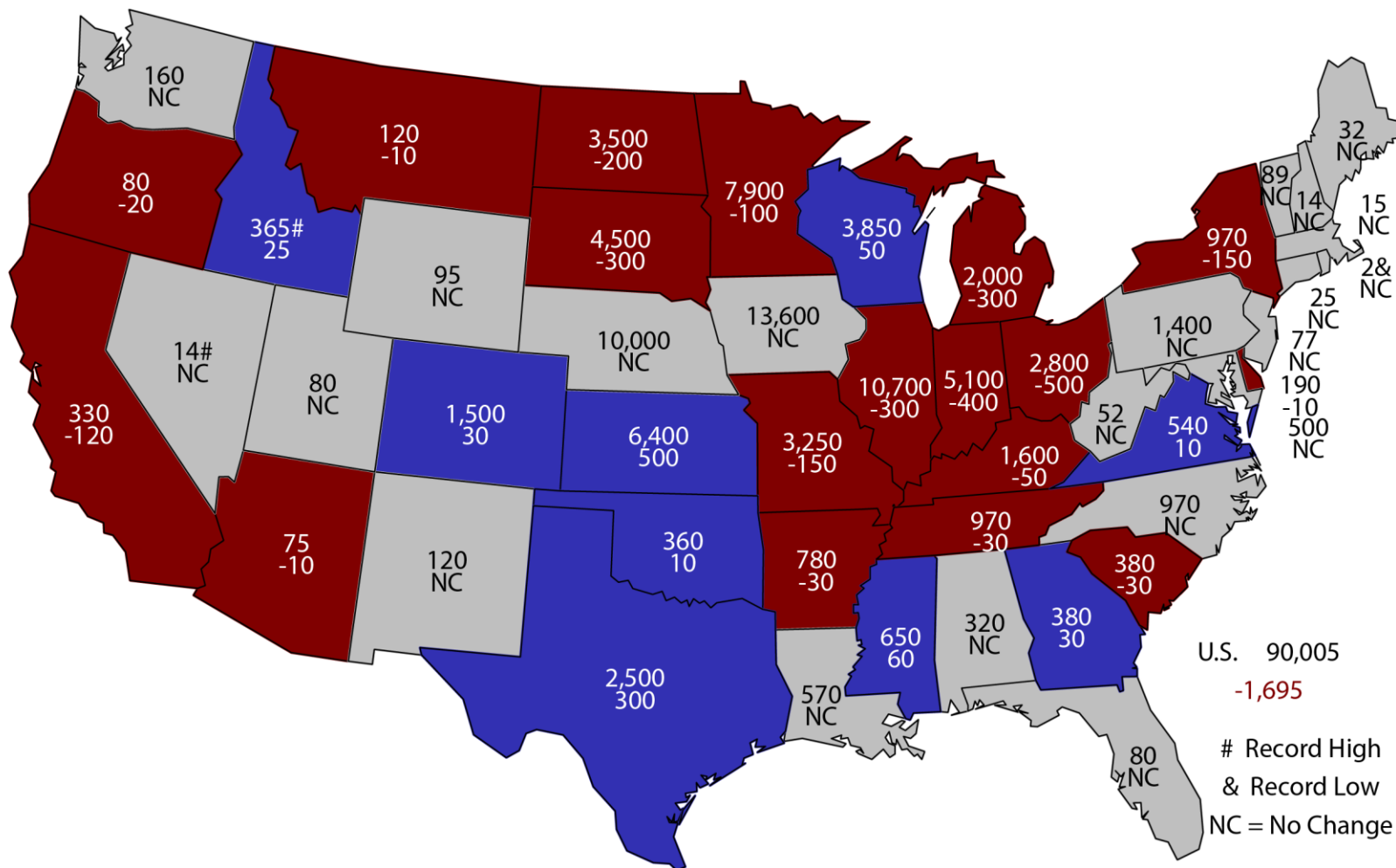
2019 Corn Planted Area

(000) Acres and Change From Previous Year



2019 Corn Planted Area

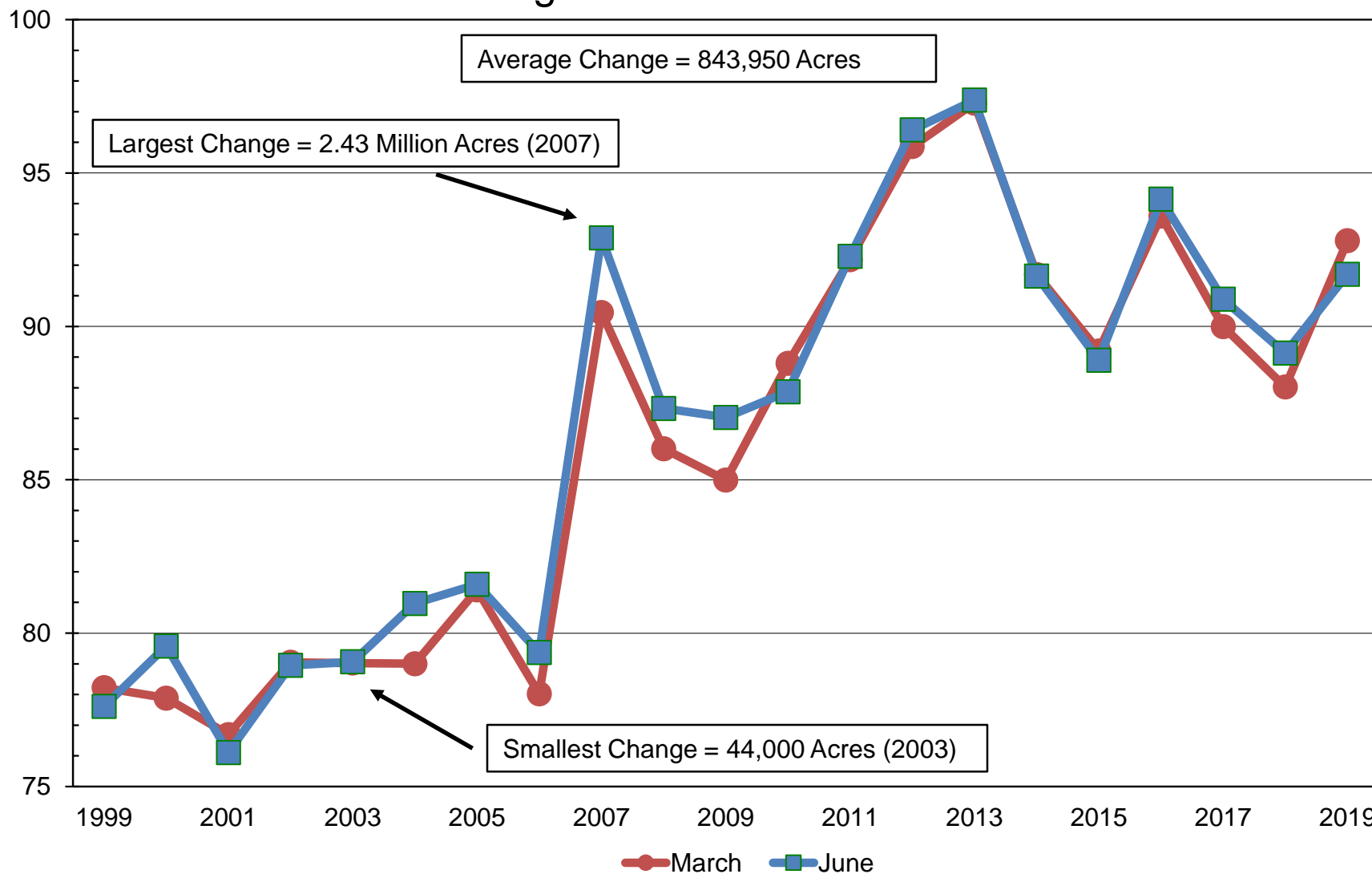
(000) Acres and Change From Previous Estimate



Million Acres

Corn Planted Acres

Change from March to June



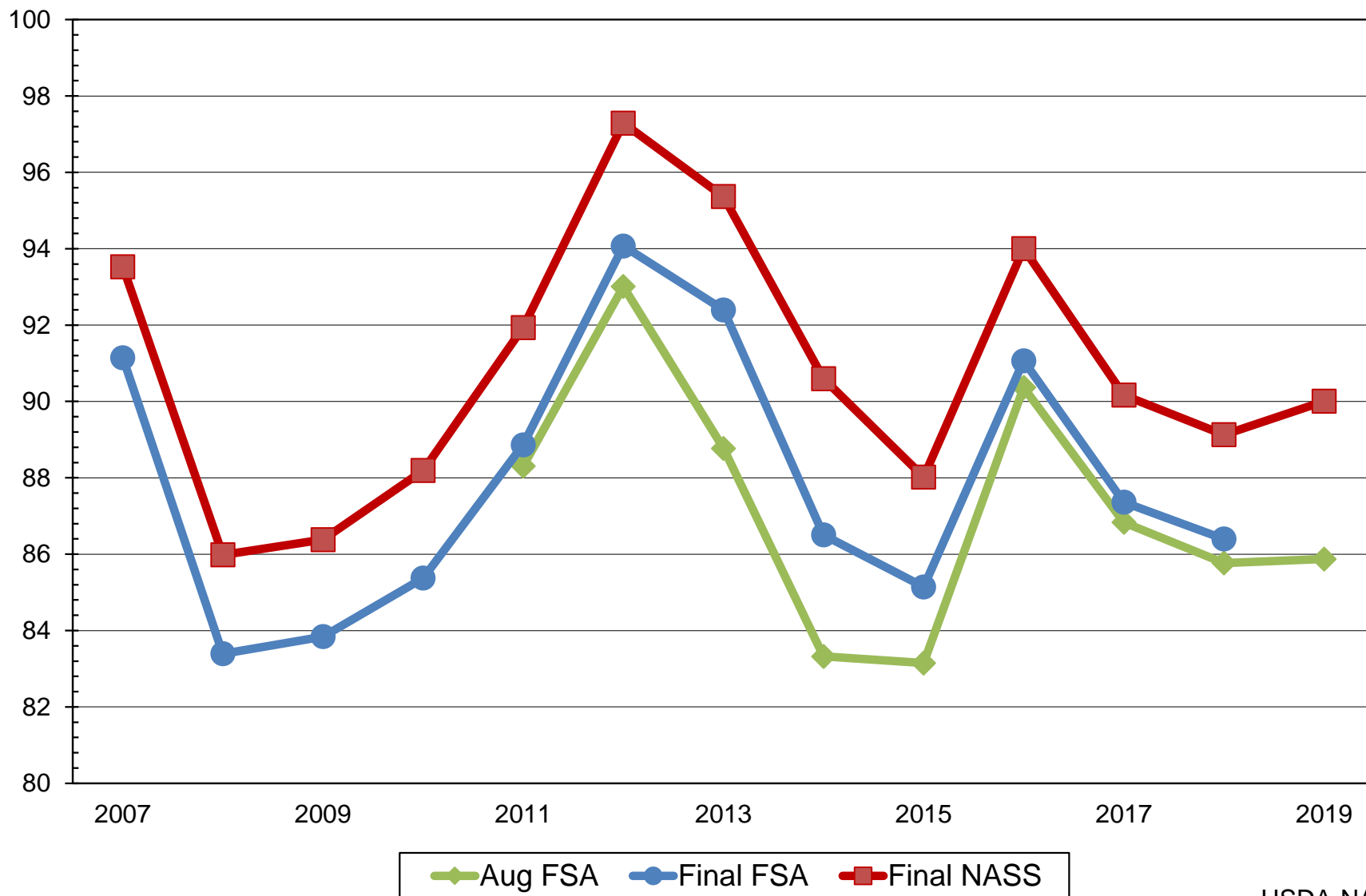


Million Acres



United States Corn Planted Acres

FSA and NASS

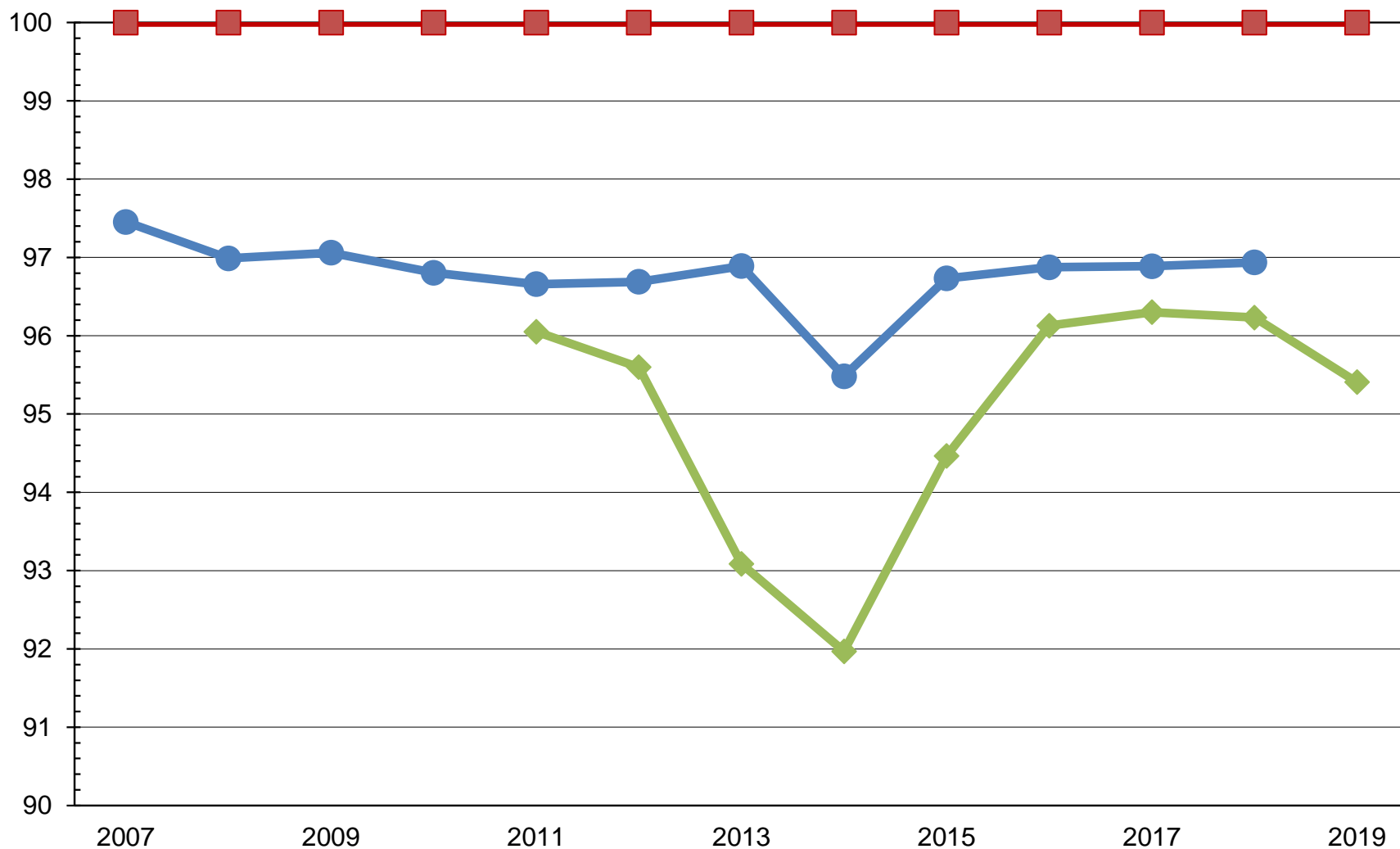




United States Corn Planted Acres

Million Acres

FSA and NASS



Aug FSA Final FSA Final NASS

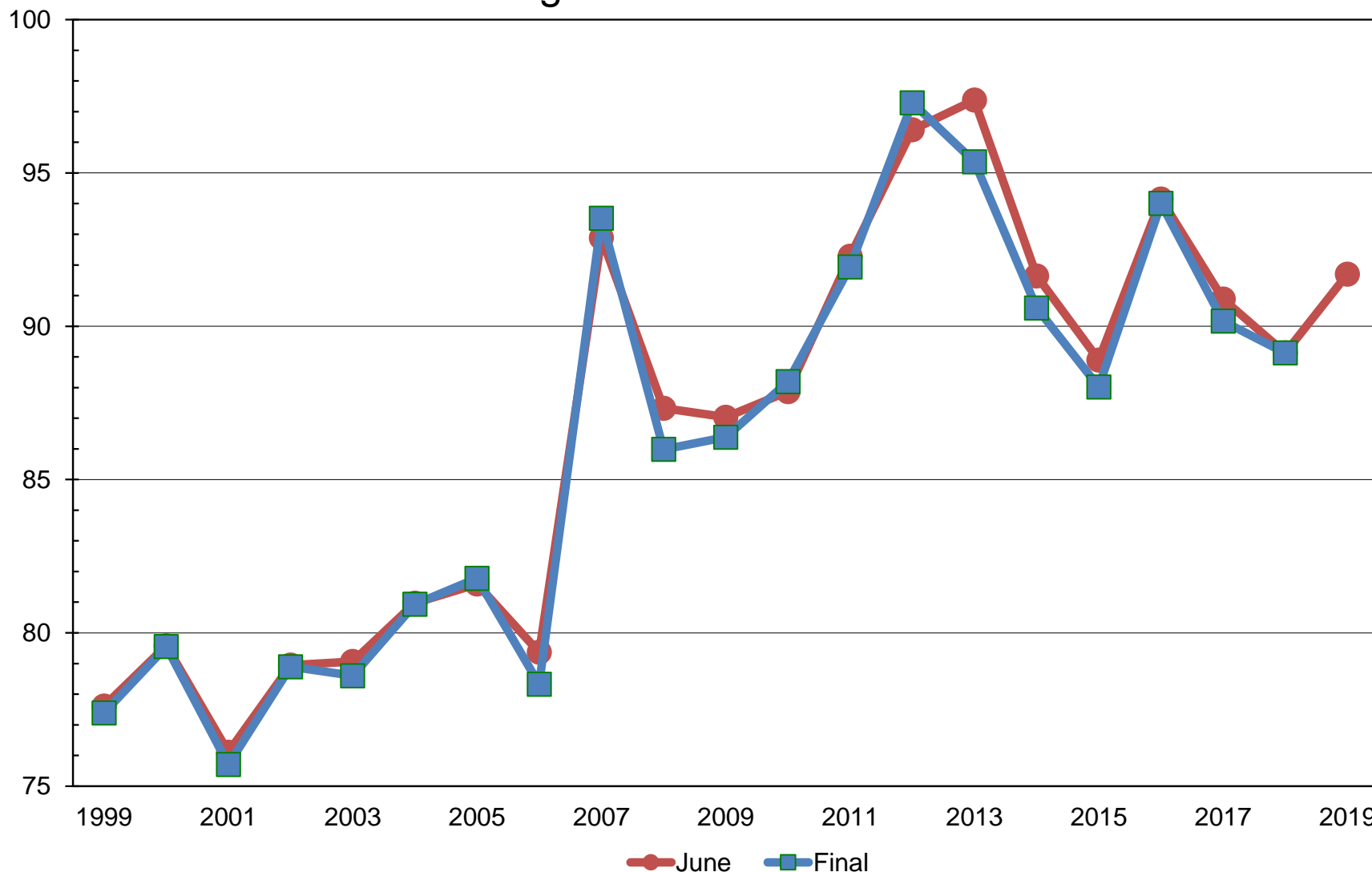


Million Acres



Corn Planted Acres

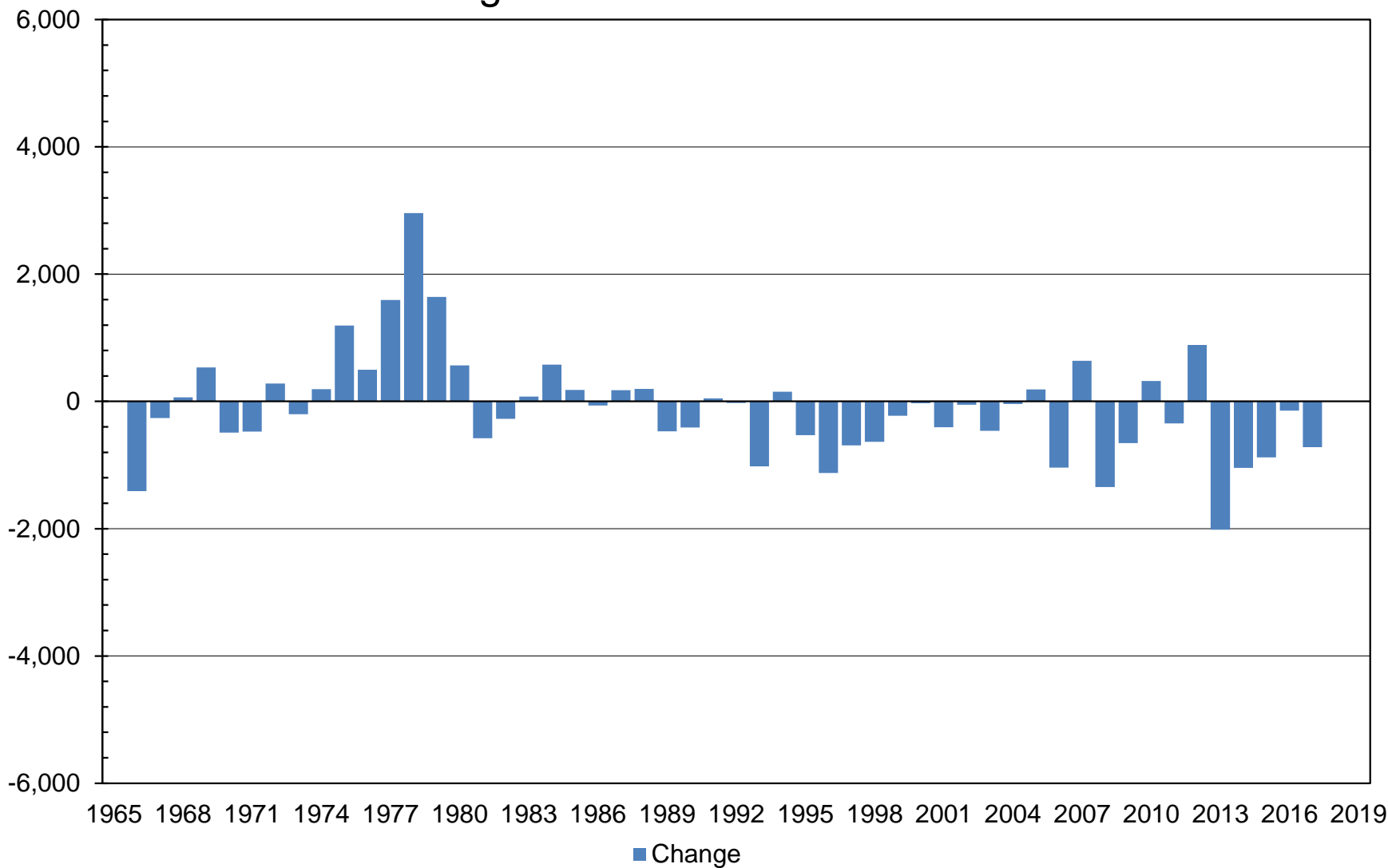
Change from June to Final



Corn Planted Acres

Change from June to Final

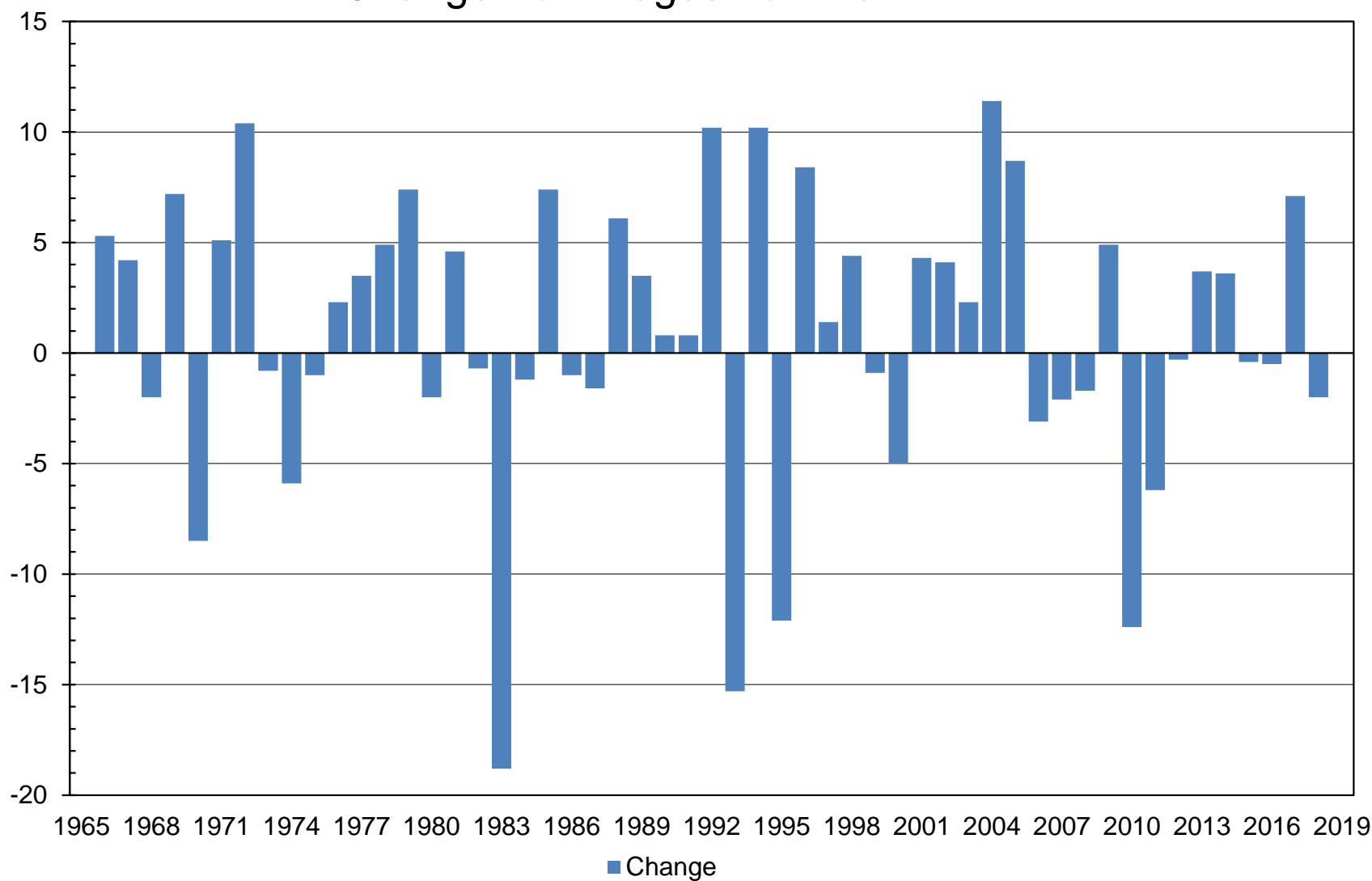
Thousand Acres



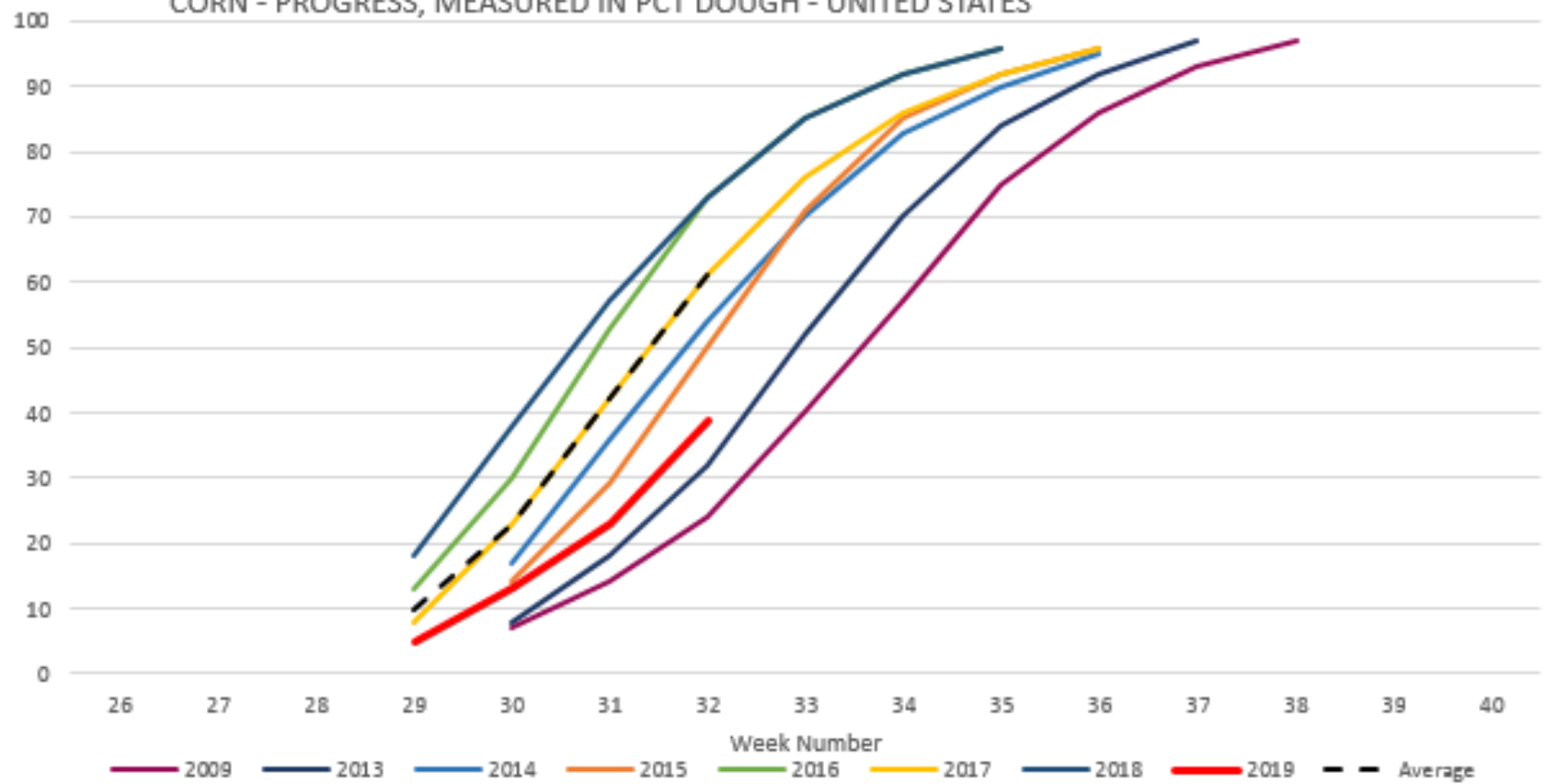
Corn Yield

Bushels per Acre

Change from August to Final

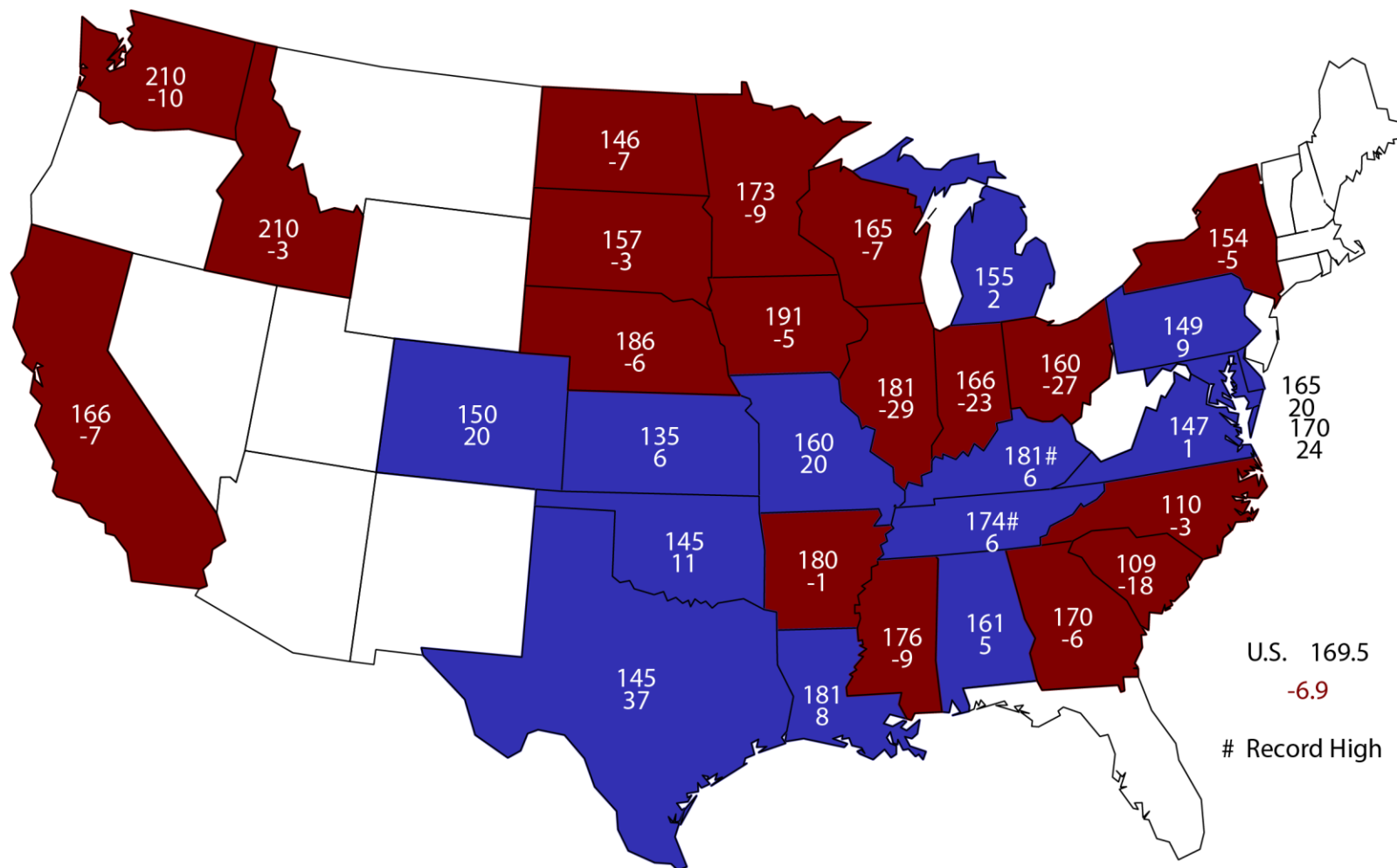


CORN - PROGRESS, MEASURED IN PCT DOUGH - UNITED STATES



August 1, 2019 Corn Yield

Bushels and Change From Previous Year

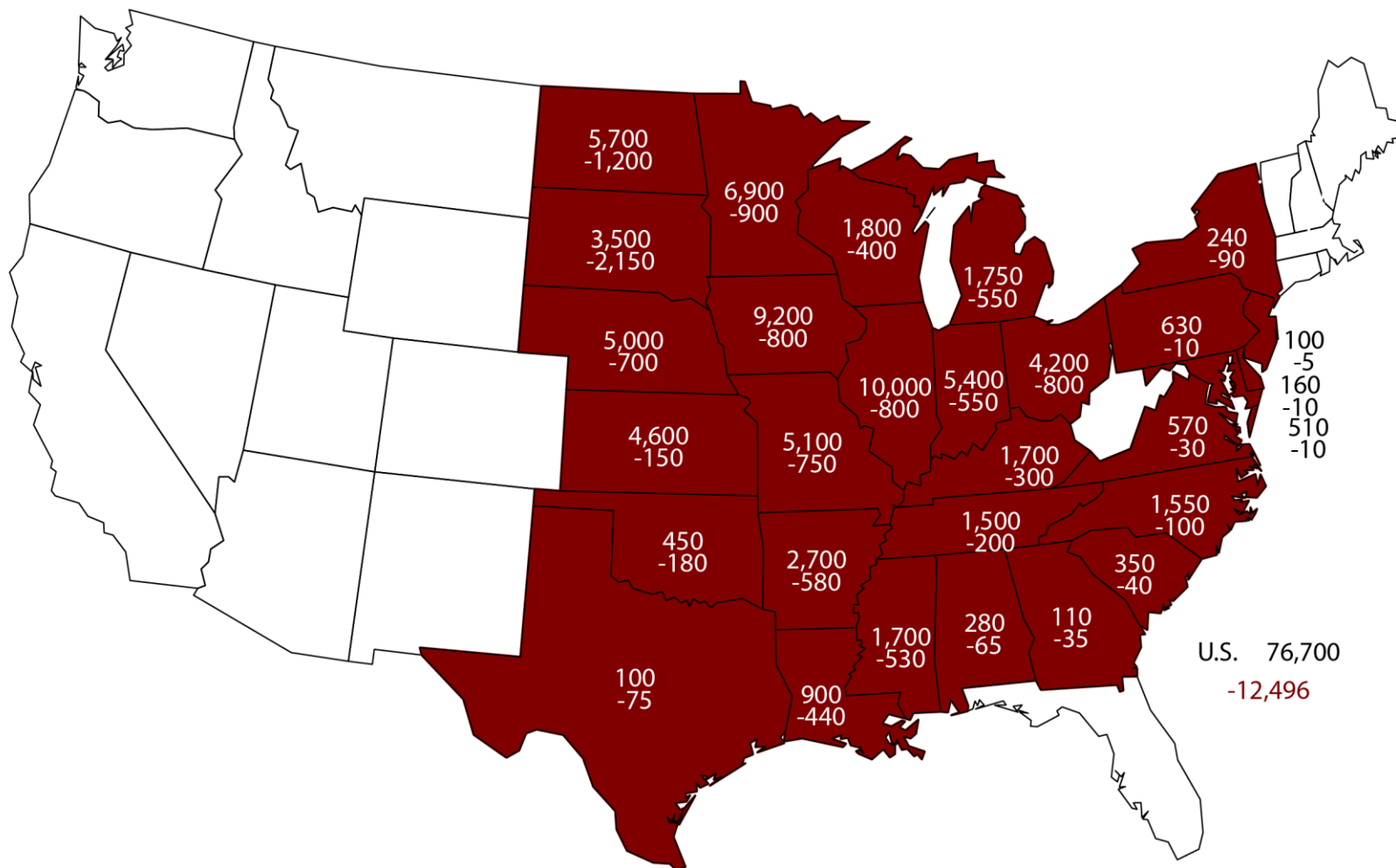


U.S. 169.5
-6.9

Record High

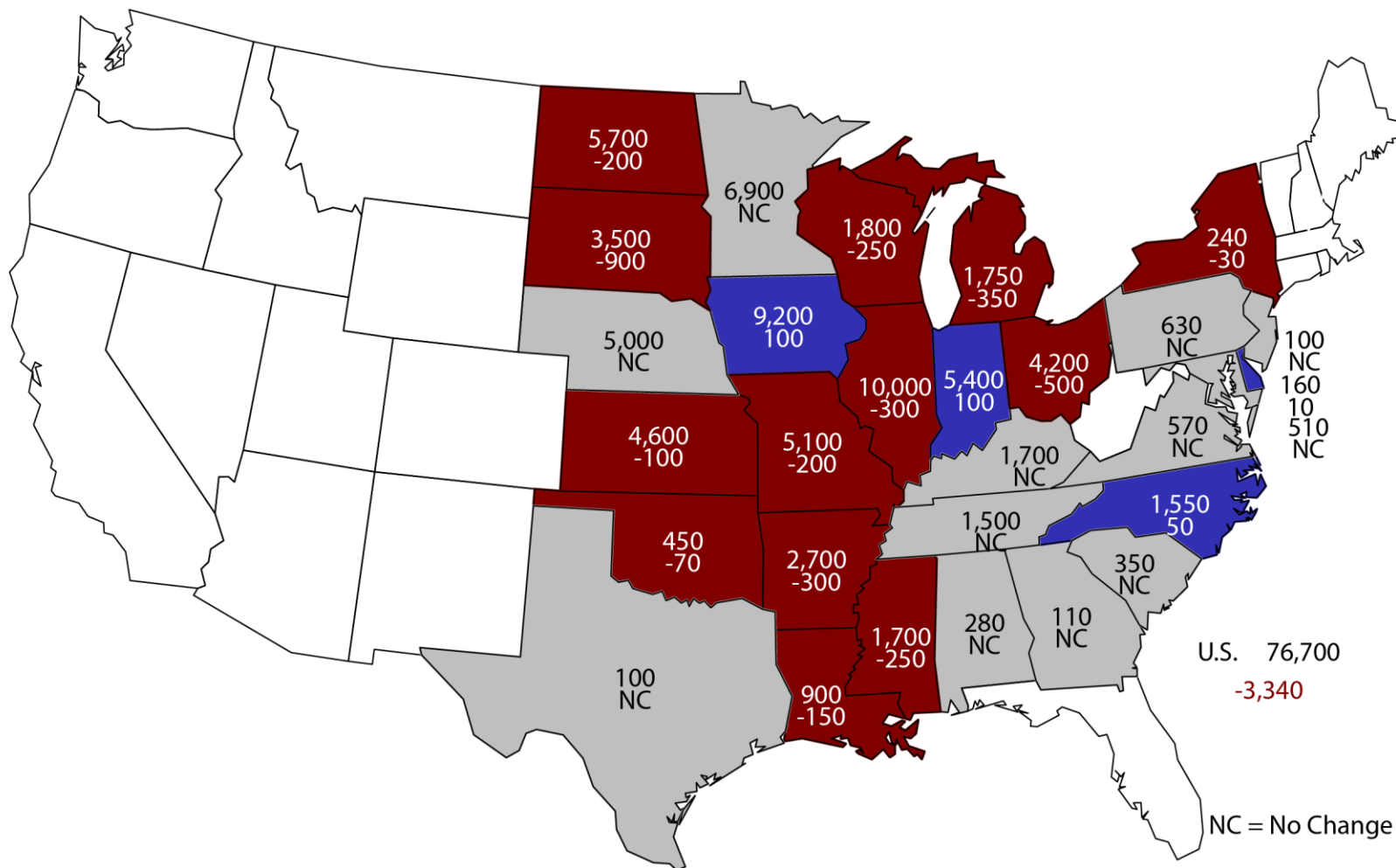
2019 Soybean Planted Area

(000) Acres and Change From Previous Year



2019 Soybean Planted Area

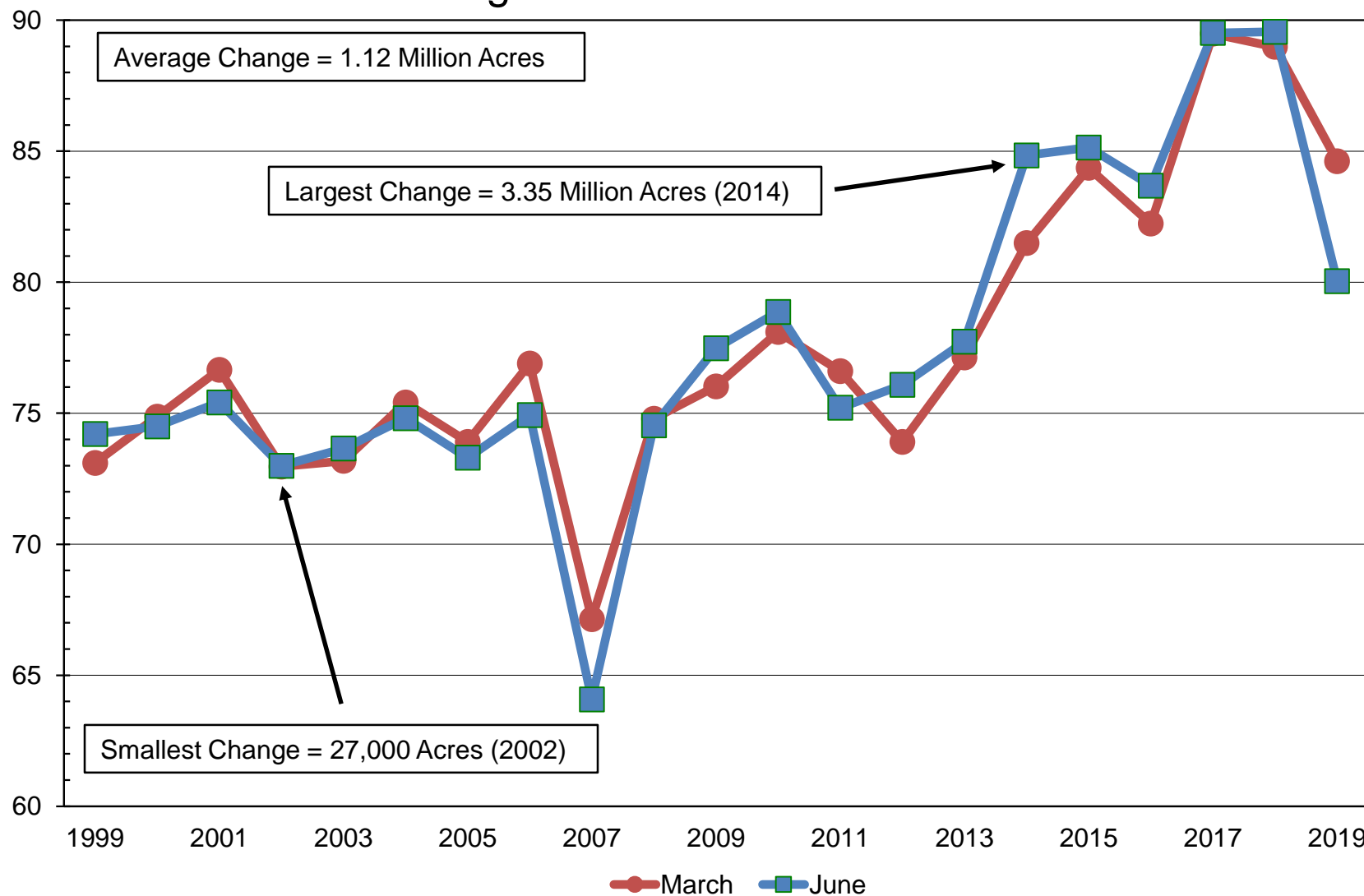
(000) Acres and Change From Previous Estimate



Soybean Planted Acres

Change from March to June

Million Acres

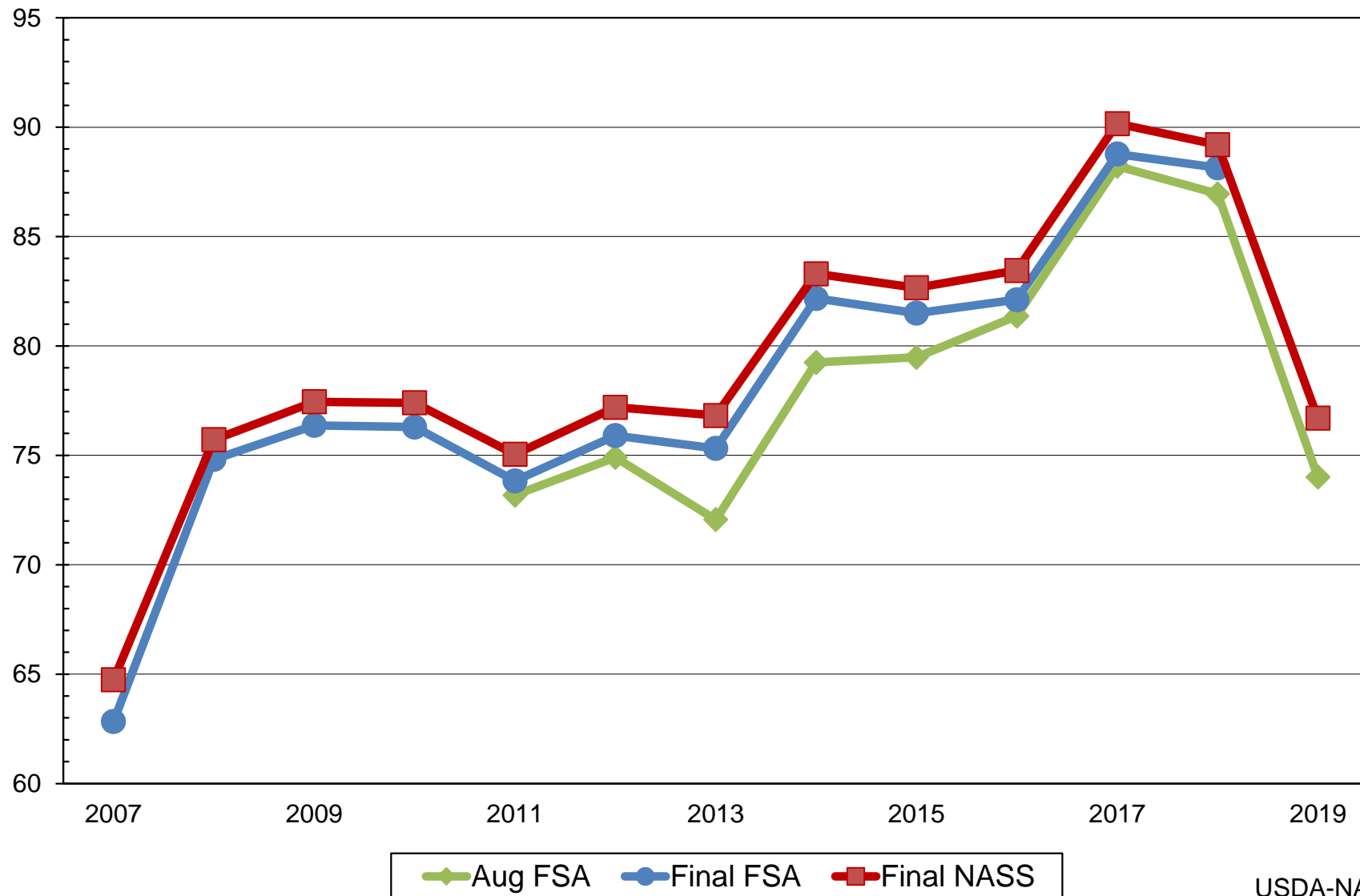




United States Soybean Planted Acres

FSA and NASS

Million Acres



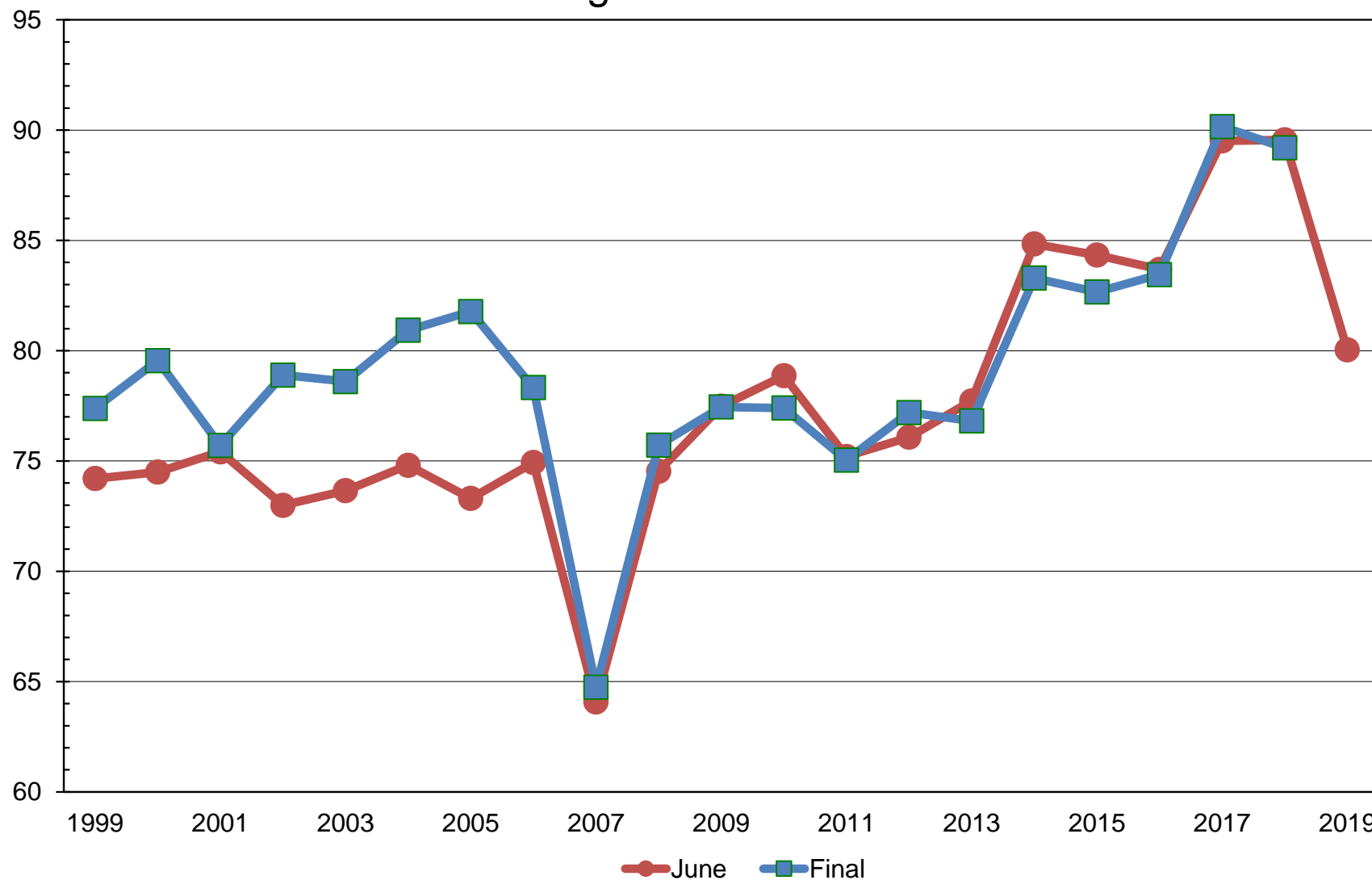


Million Acres



Soybean Planted Acres

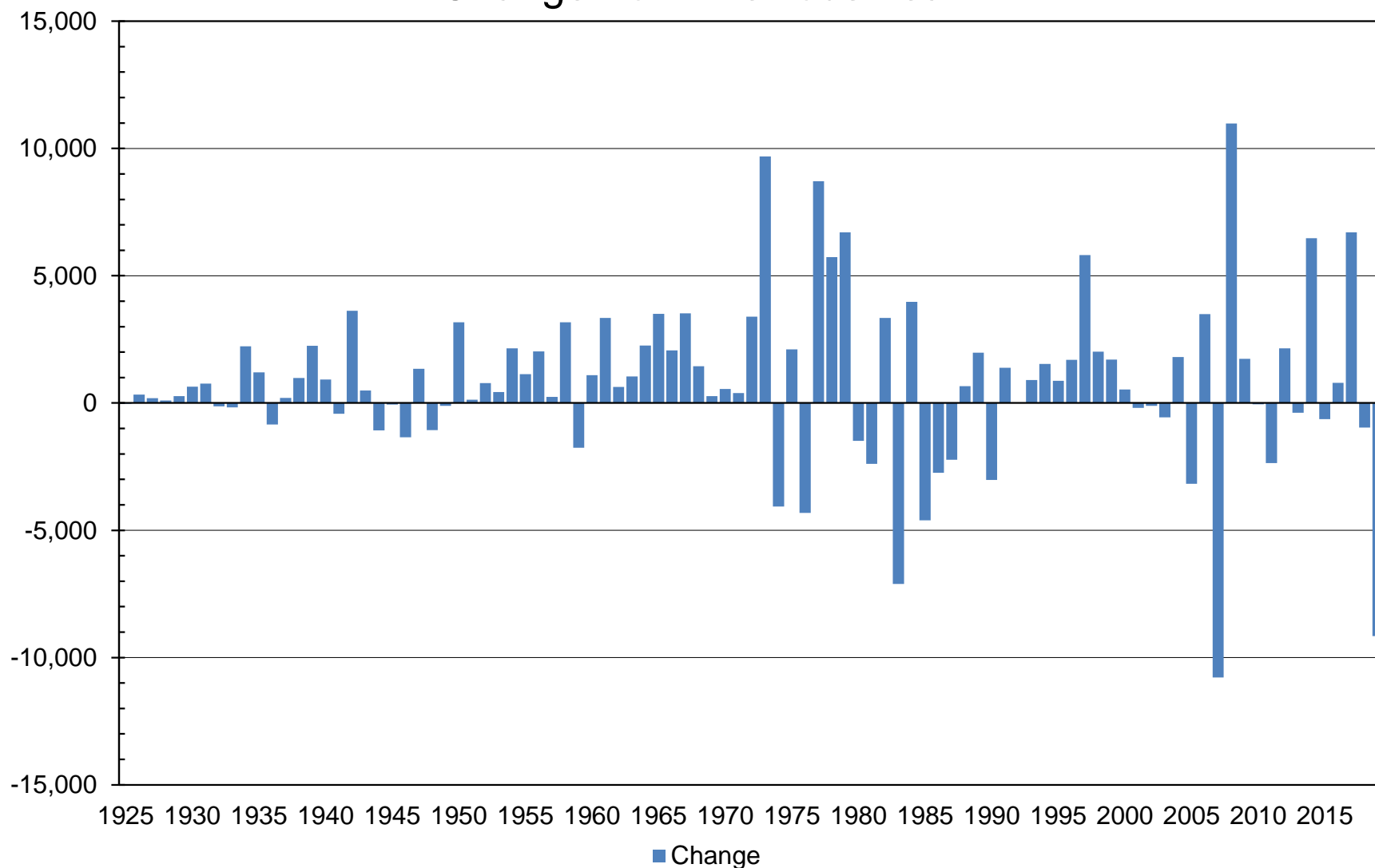
Change from June to Final



Soybean Planted Acres

Change from Previous Year

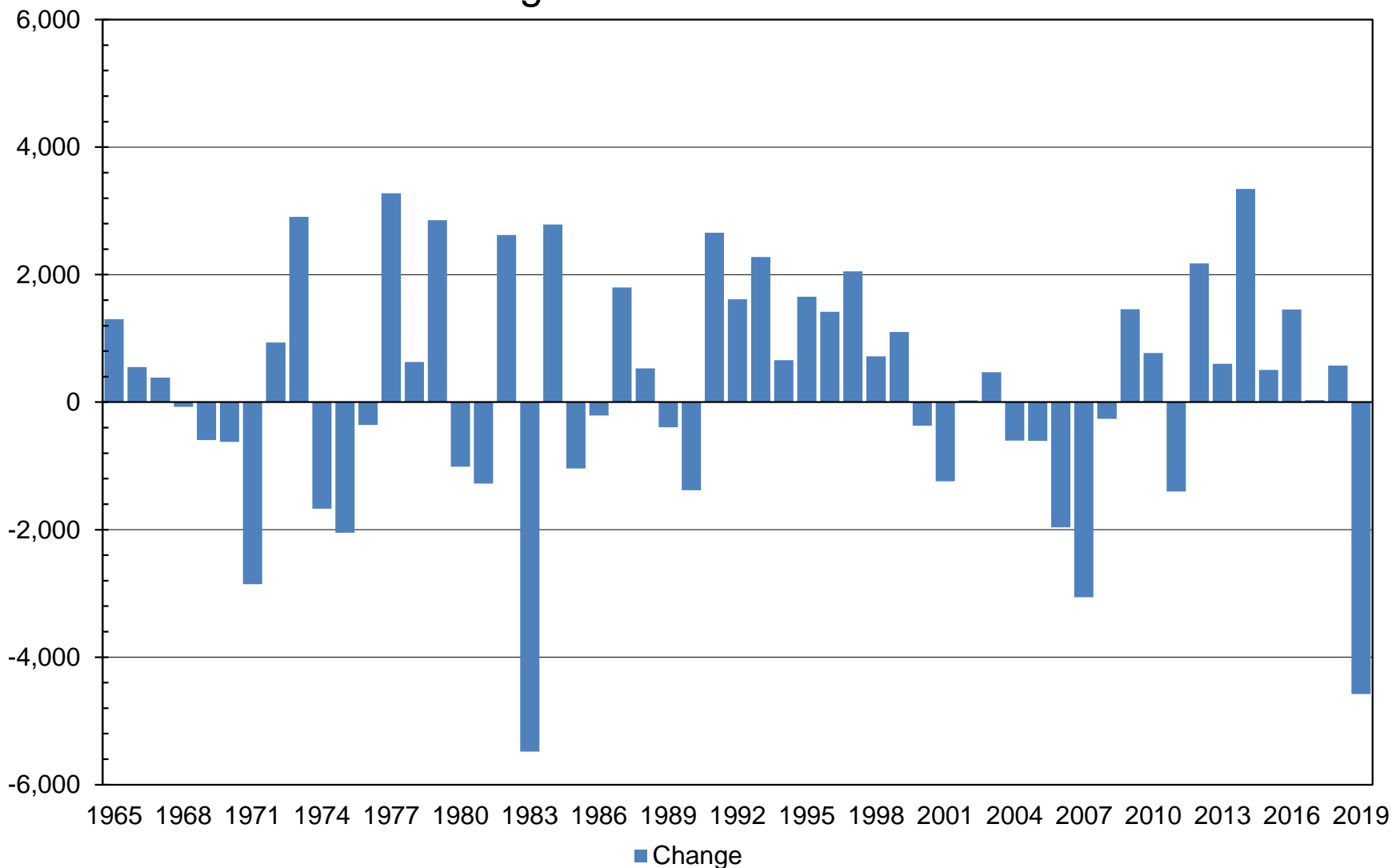
Thousand Acres

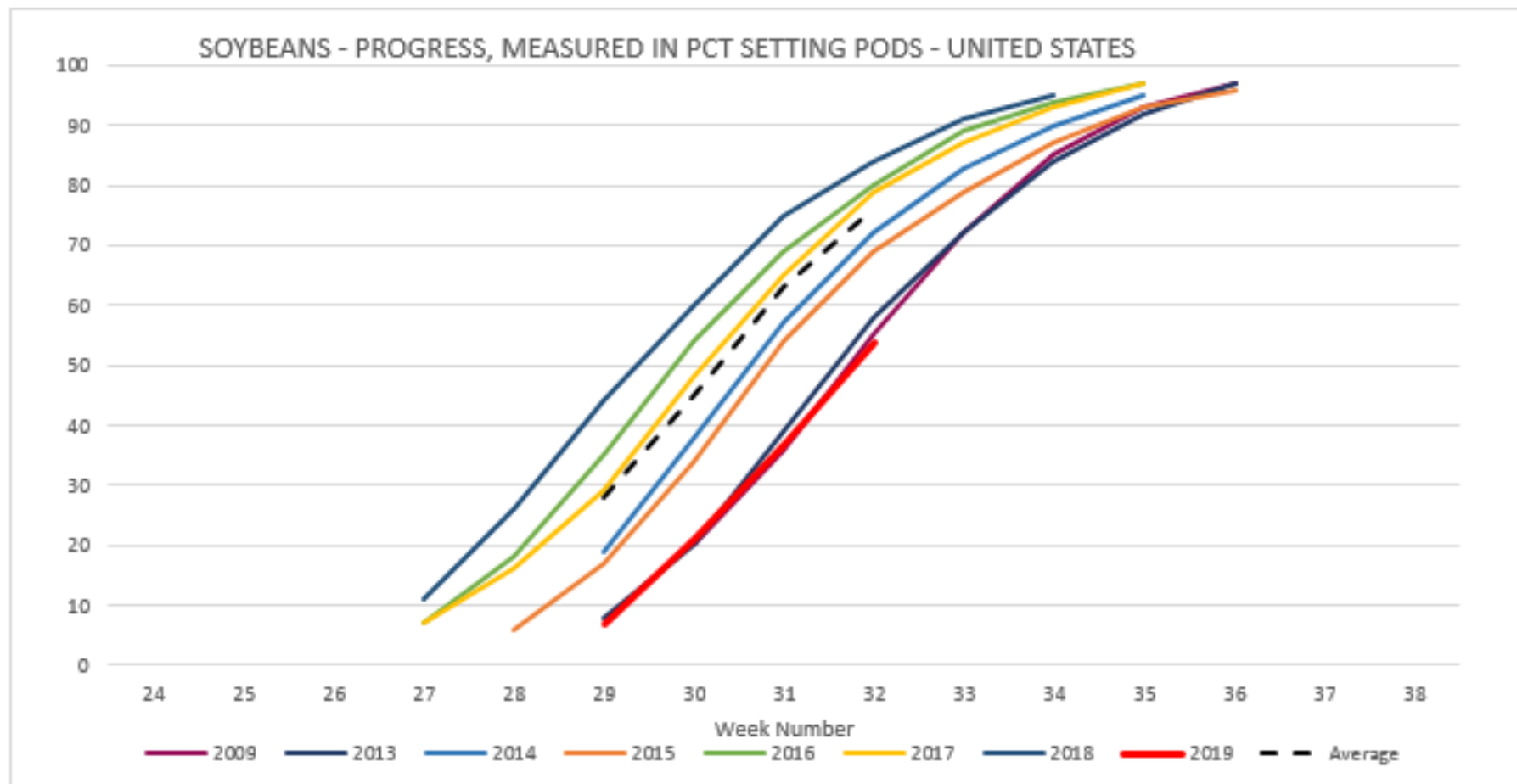


Soybean Planted Acres

Change from March to June

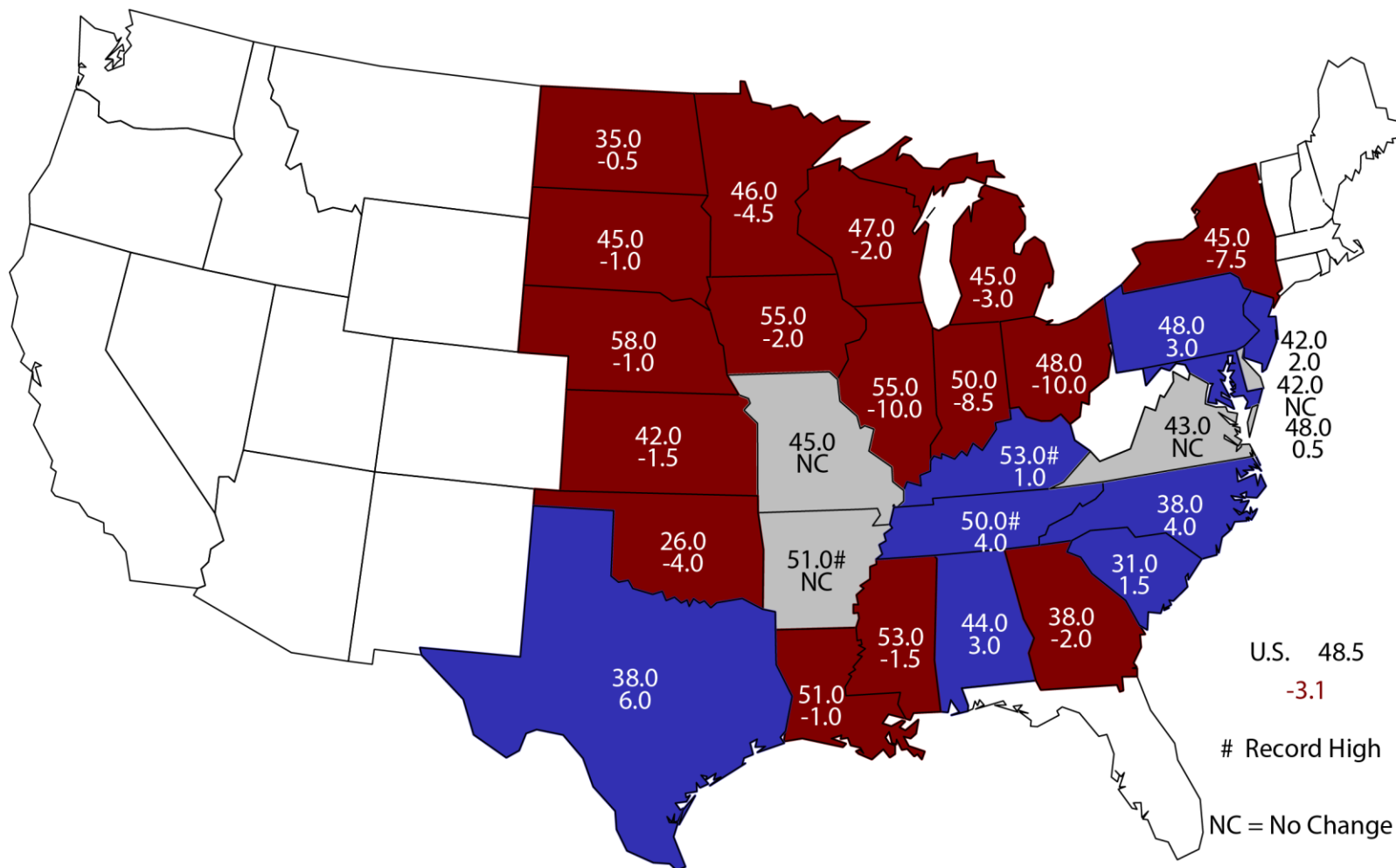
Thousand Acres





August 1, 2019 Soybean Yield

Bushels and Change From Previous Year

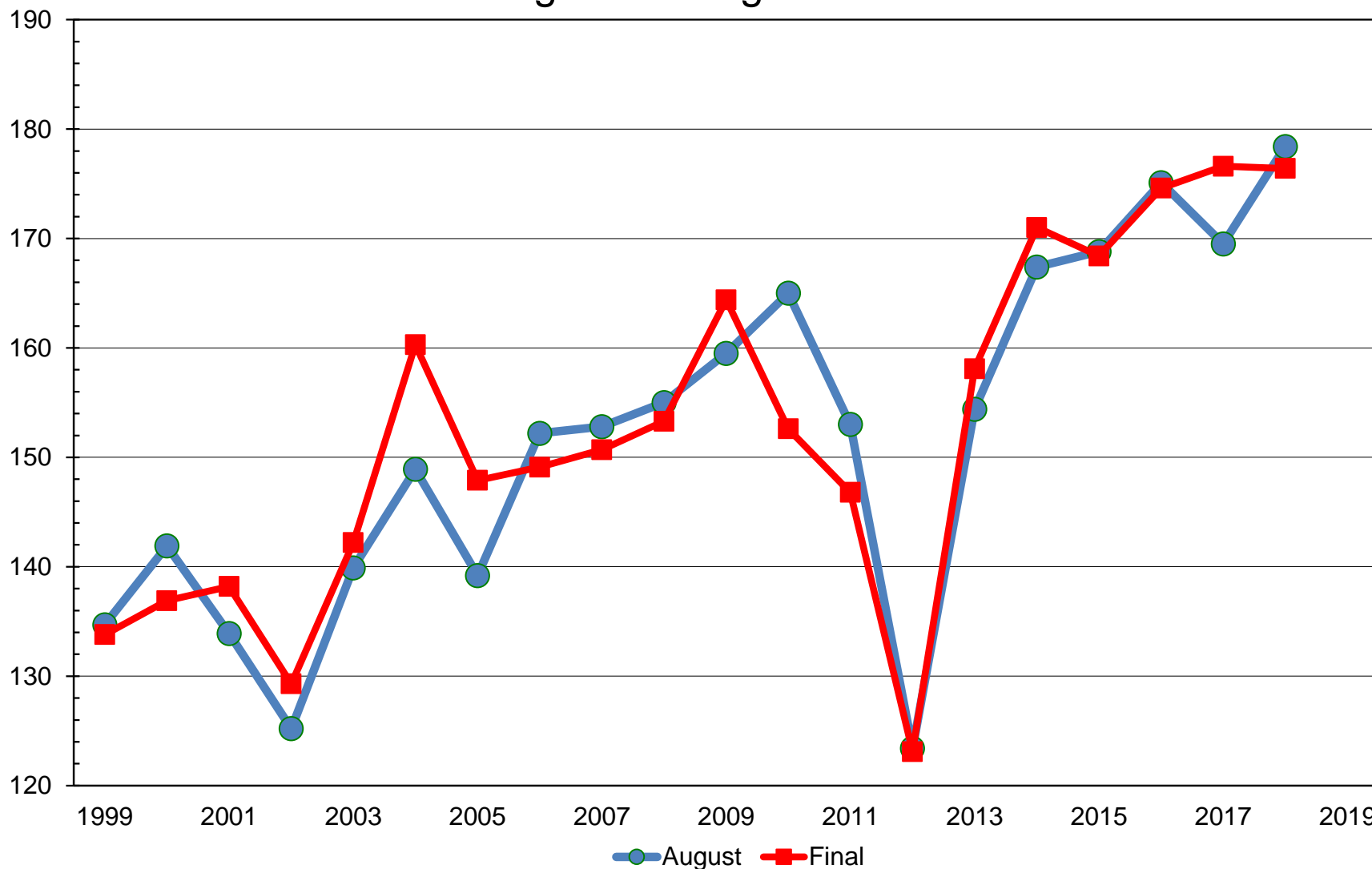




Soybean Yield

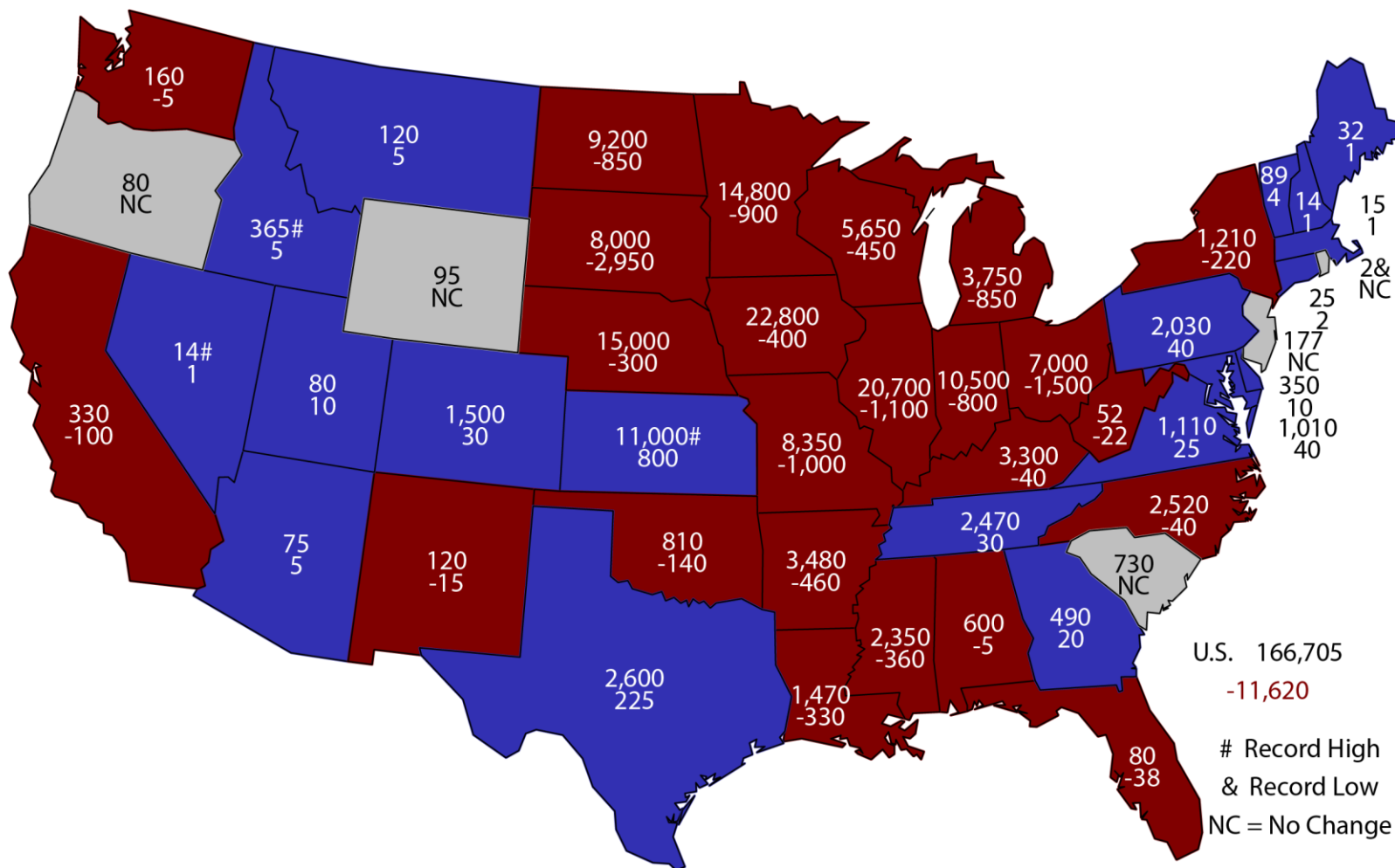
Change from August to Final

Bushels per Acre



2019 Combined Corn & Soybean Planted Area

(000) Acres and Change From Previous Year

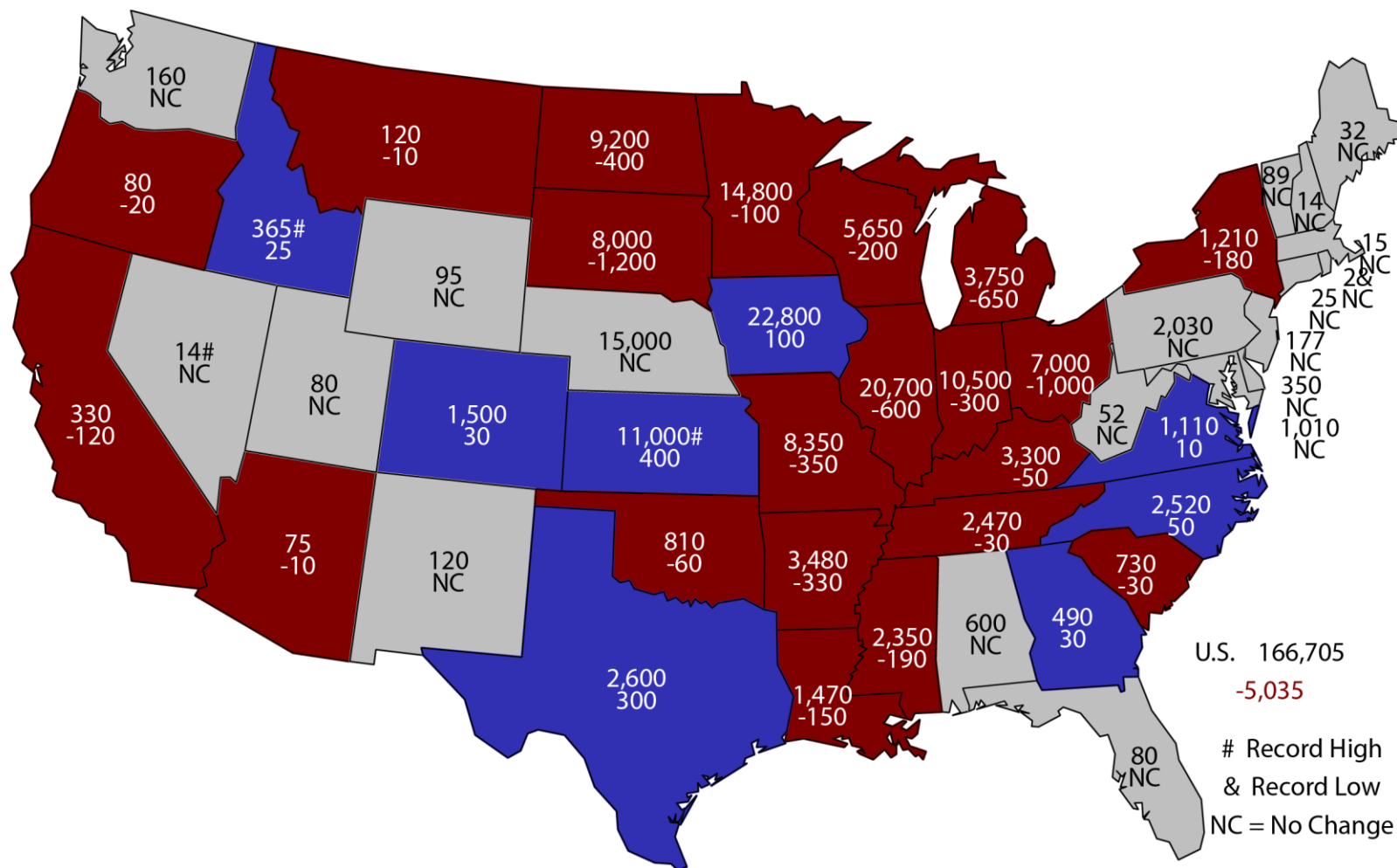


U.S. 166,705
-11,620

Record High
& Record Low
NC = No Change

2019 Combined Corn & Soybean Planted Area

(000) Acres and Change From Previous Estimate

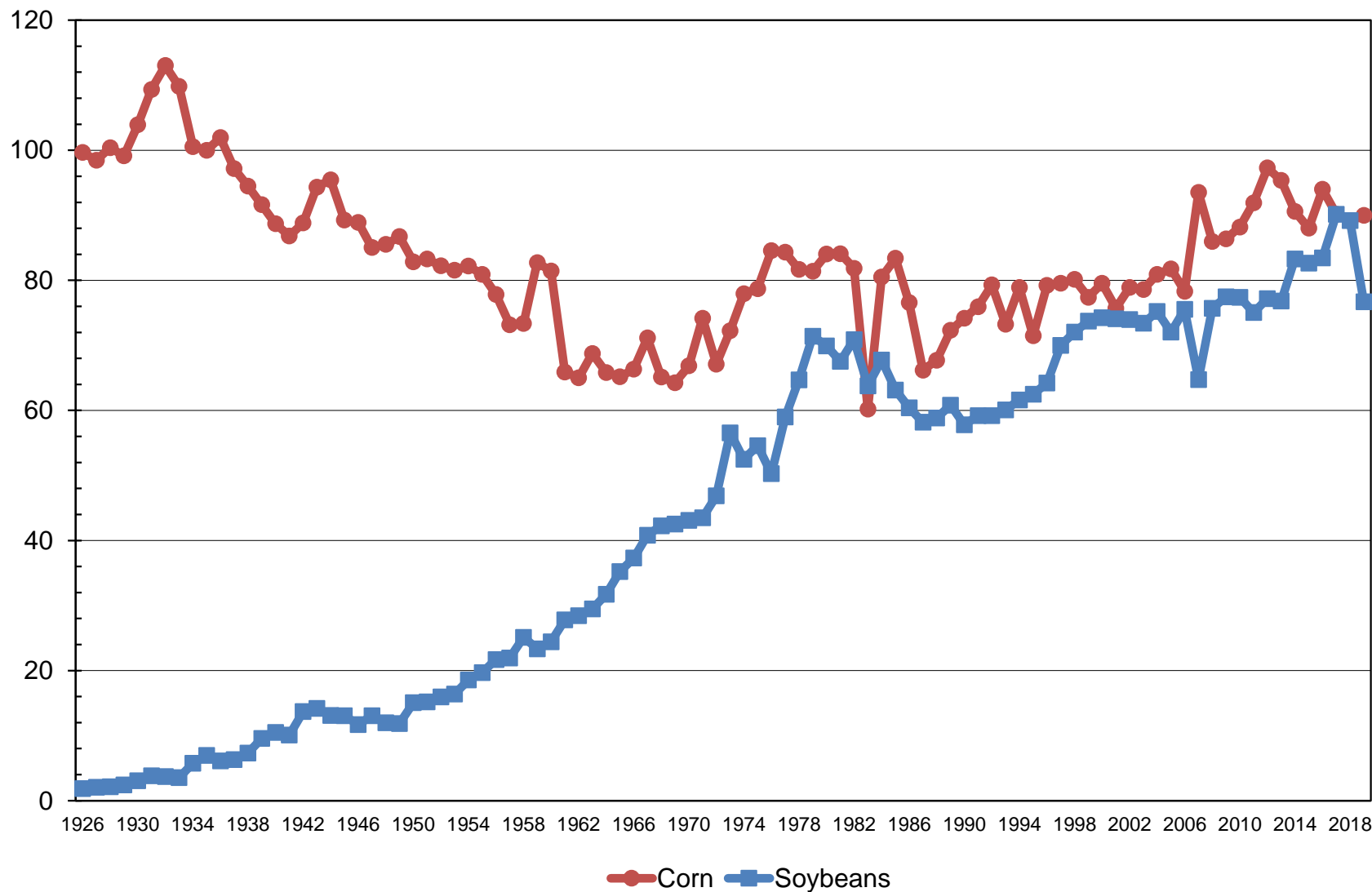




Corn and Soybean Planted Acres

United States

Million Acres

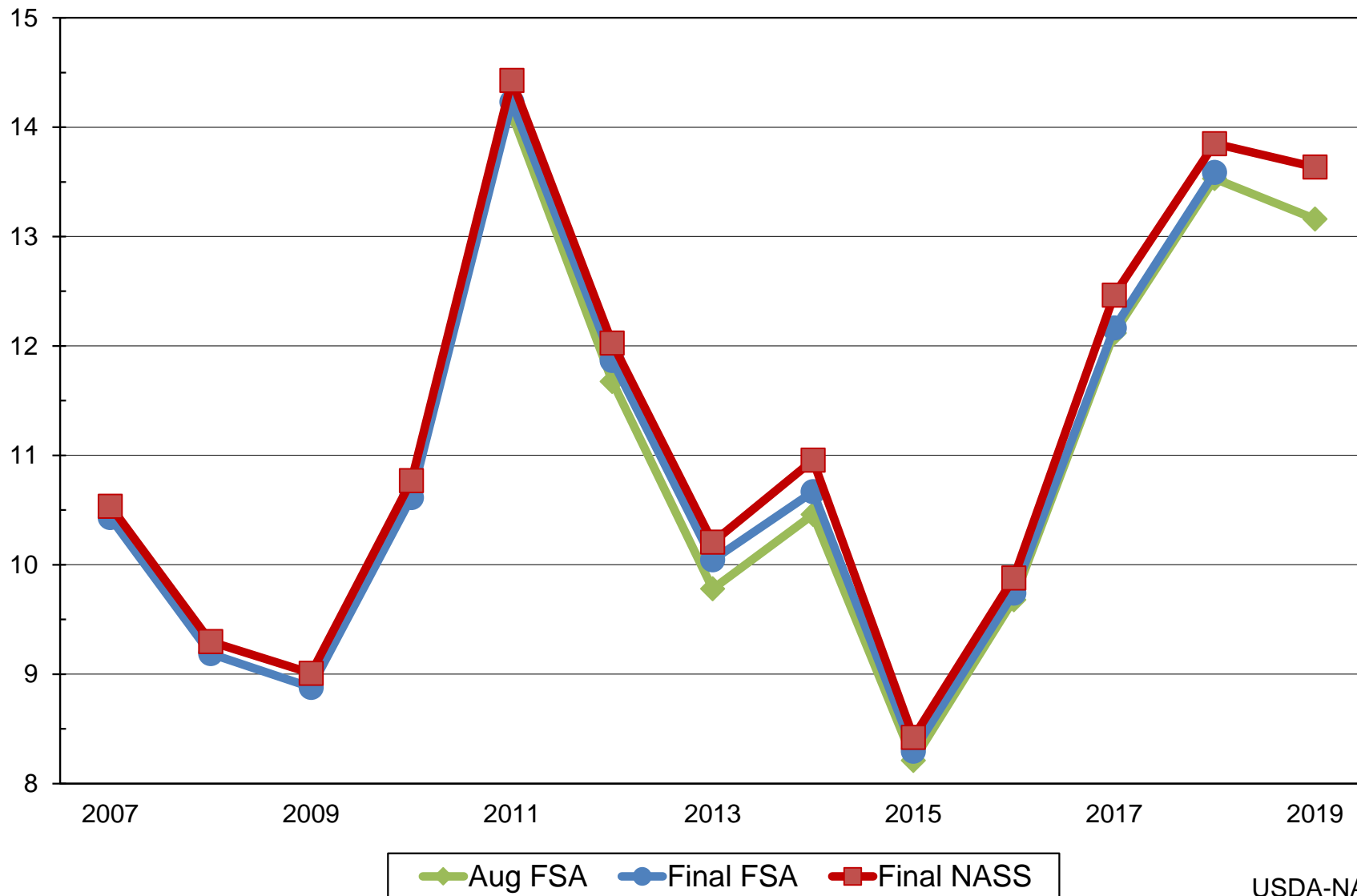




United States Upland Cotton Planted Acres

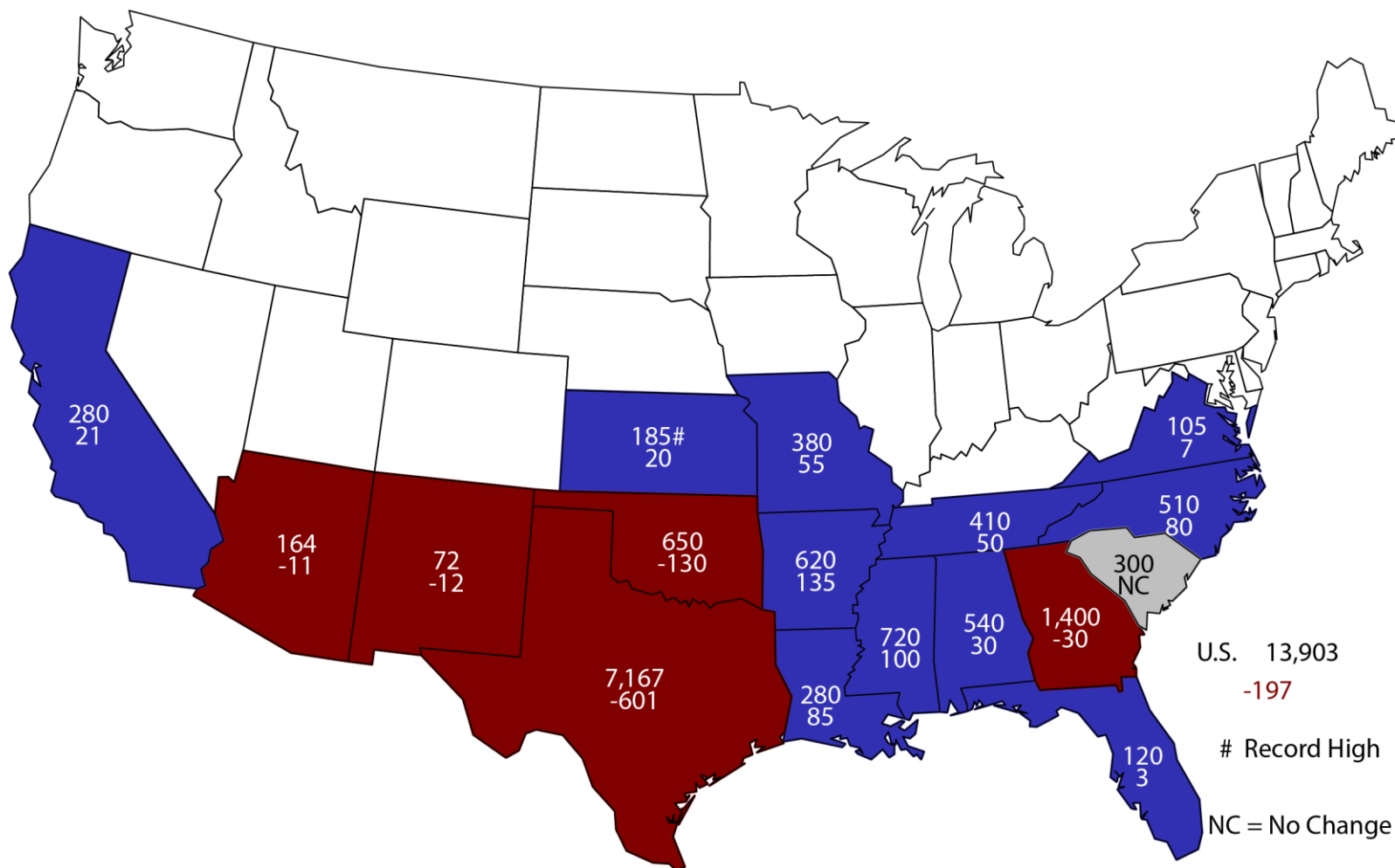
FSA and NASS

Million Acres



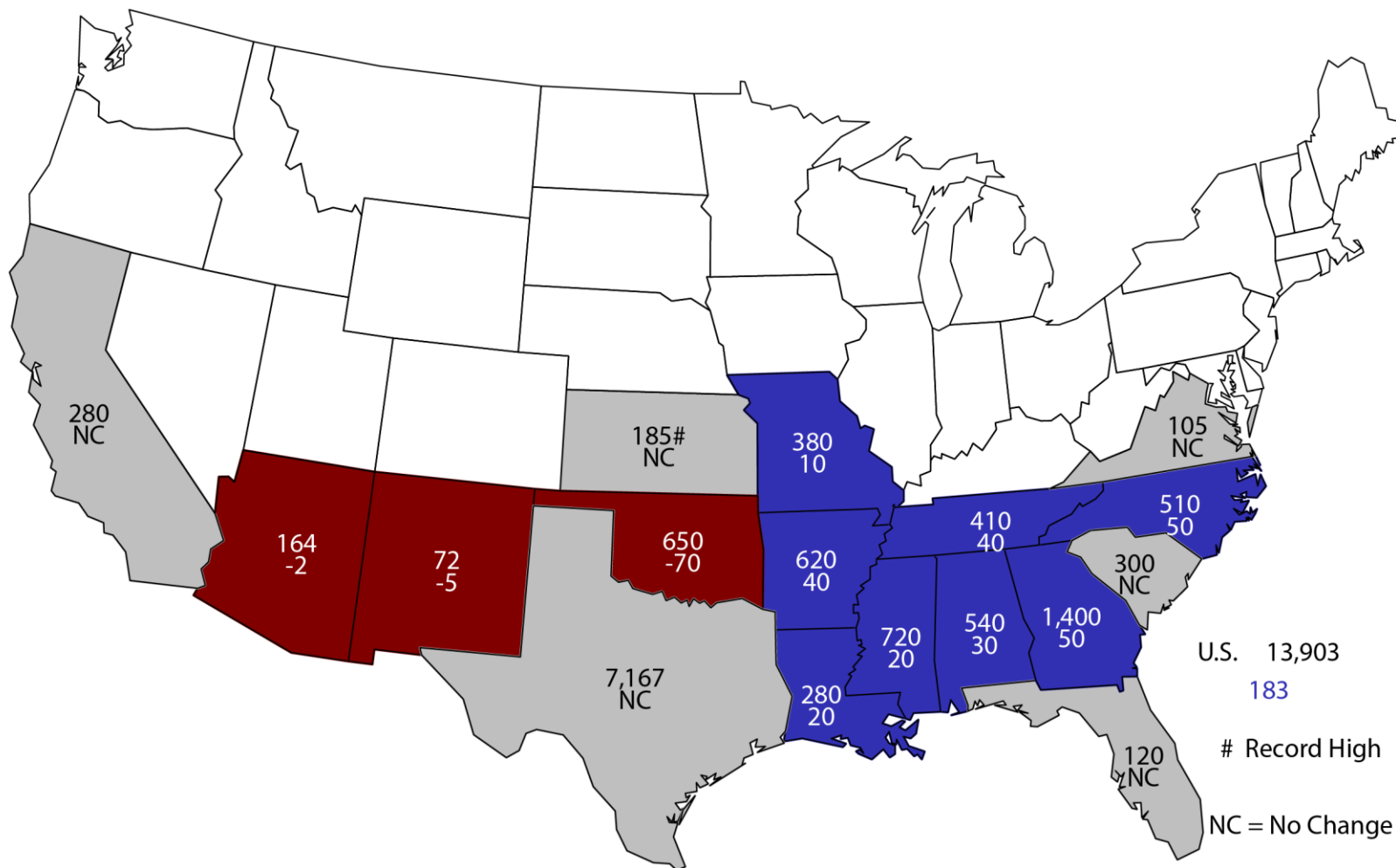
2019 All Cotton Planted Area

Acres (000) and Change From Previous Year



2019 All Cotton Planted Area

Acres (000) and Change From Previous Estimate



STAT CHAT SERIES

You can tweet
questions in advance
to @usda_nass.

Join @usda_nass on Twitter using
#StatChat to discuss the ***Crop Production***
report with Lance Honig.

MONDAY, AUG. 12 @ 1PM ET

#STATCHAT



United States Department of Agriculture
National Agricultural Statistics Service

All Reports Available At
www.nass.usda.gov

For Questions
202-720-2127
800-727-9540
nass@nass.usda.gov