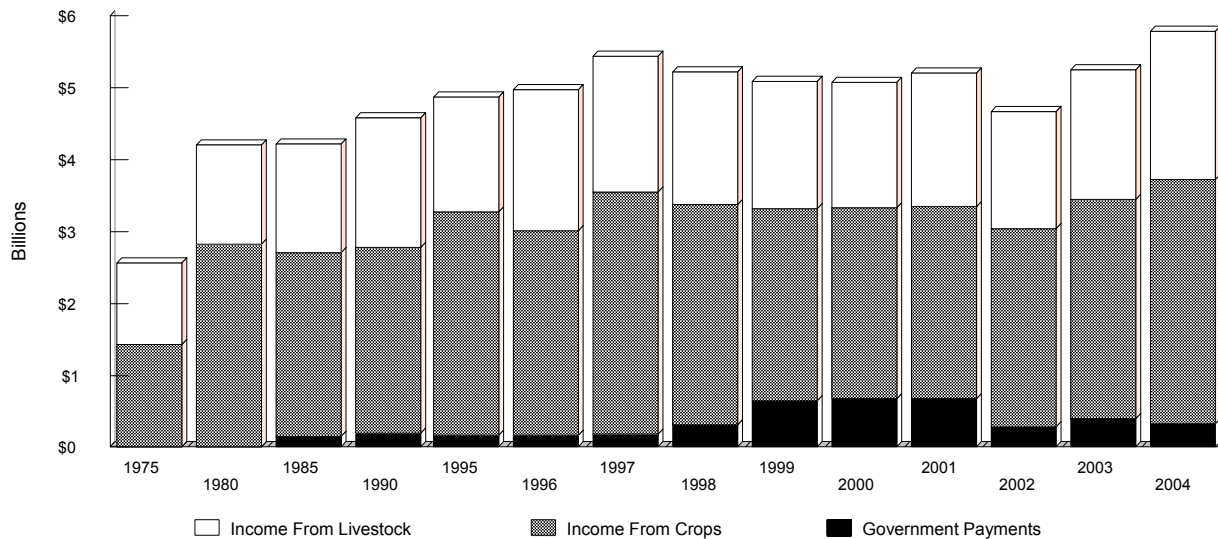
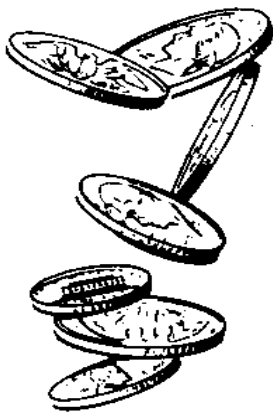


# 2004 OHIO FARM INCOME

## CASH RECEIPTS BY OHIO FARMERS FROM LIVESTOCK, CROPS, AND GOVERNMENT PAYMENTS BY FIVE YEAR INTERVALS, 1975-95 & YEARLY 1996-2004



Ohio Agricultural Research and Development Center  
Wooster, Ohio



# CONTENTS

	<u>Page</u>
Ohio Farm Income .....	2
Tables:	
I. Cash Receipts From Farm Marketings and Government Payments, Ohio 1958-2004 .....	3
II. Cash Receipts by Major Commodities in Order by Value, Ohio, 2003 and 2004 .....	4
III. Cash Receipts by Commodity and Commodity Groups, Ohio, 2003 and 2004 .....	4/5
IV. Cash Receipts from Farm Marketings (Including CCC Loans), by Months, Ohio and United States, 2003 and 2004 .....	6
V. Farm Assets, Debts and Ratios, Ohio 2000-2003, U.S. 2002-2003 .....	7
VI. Farm Income Statement of Ohio, 2002-2004 and U.S. 2003-2004 .....	8
VII. Cash Receipts by Counties, Ohio 2003 Revised and 2004 Preliminary .....	10
VIII. Cash Receipts from Farm Marketings, by Commodities and Commodity Groups, by Counties, Ohio 2003 Revised .....	12
IX. Cash Receipts from Farm Marketings, by Commodities and Commodity Groups, by Counties, Ohio 2004 Preliminary .....	16
X. Cash Receipts of the Eight Major Commodities by Relative Importance, by Counties, Ohio 2004 .....	20
XI. The County Rankings by Total Cash Receipts and Major Agricultural Commodities, Ohio 2004 .....	24
Procedure .....	28
Figures:	
I. Cash Receipts by Commodity, Percent of Total, Ohio, 2004 .....	6
II. Gross and Net Farm Income, Ohio 1989-2004 .....	7
III. County Maps: 2004 Cash Receipts from Farm Marketings .....	29

By

Alan Randall, Chair  
Katherine Snipes, Student Assistant

James E. Ramey  
Wayne F. Matthews

Department of Agricultural, Environmental  
and Development Economics  
The Ohio State University and  
Ohio Agricultural Research  
and Development Center

Cooperating with  
  
Reynoldsburg, Ohio  
October 2005

National Agricultural  
Statistics Service  
United States Department  
of Agriculture

## OHIO FARM INCOME

This is the first year in which the format was revised to exclude county extension districts. Counties are instead listed in alphabetical order. Cash receipts during 2004, from Ohio's livestock, livestock products, and crops totaled a record high \$5.46 billion, 12.5 percent above last year's \$4.85 billion. Cash receipts from all crops in 2004 were up 11.3 percent from 2003. Cash receipts from livestock in 2004 were 14.5 percent above the 2003 cash receipts from livestock.

The 2004 value of cash receipts for crops at \$3.39 billion, a new record high, was up 11.3 percent from 2003 and is 0.5 percent higher than the record of \$3.37 billion in 1997. The percentage of total farm marketings attributable to crops in 2004 was 62.0 percent, 0.7 point below the revised 2003 data.

The 2004 cash receipts for livestock and livestock products totaled \$2.07 billion, up 14.5 percent from last year and 7 percent higher than the **record set in 1996**. The percentage of total farm marketings earned by livestock and livestock products was 38.0 percent, 0.7 point above the revised 2003 cash receipts.

Government payments totaled \$332.6 million, 16.8 percent below last year's \$339.8 million. This represents 5.7 percent of total cash receipts including government payments.

Agriculture in Ohio made a net value added contribution of \$2.59 billion to the National economy in 2004, up from \$2.30 billion in 2003. The final agricultural sector output, at \$6.80 billion, was up 9.6 percent from 2003. Purchased inputs totaled \$3.37 billion, up 6.4 percent from last year. Capital consumption at \$882.8 million was up 5.2 percent from 2003, while payments to stakeholders at \$1.17 billion were up 4.1 percent.

The top five commodities in terms of cash receipts earned were **soybeans** with \$1.22 billion and 22.3 percent of total receipts; **corn** with \$1.02 billion and 18.7 percent of total receipts; **wholesale milk** with \$752.0 million and 13.8 percent of total receipts; **greenhouse and nursery** with \$589.1 million and 10.8 percent of total receipts; and **poultry and eggs** with \$527.5 million and 9.7 percent of total cash receipts. The commodities ranked sixth through tenth were cattle and calves, hogs, wheat, vegetables, and hay, respectively. The top ten commodities accounted for 96.2 percent of all Ohio cash receipts.

The following ten counties ranked first through tenth, respectively, based on total cash receipts: Mercer, Darke, Wayne, Putnam, Licking, Holmes, Wood, Hardin, Madison, and Auglaize. Wayne county ranked first in milk, and cattle and calves, and oats & hay. Mercer county ranked first in cash receipts for hogs, poultry and other livestock. Darke county was in first place for corn and soybeans. Wood county was first for wheat, and Lorain county ranked number one for other crops.

This year's report includes publication of revised data by county for 2003 in addition to the 2004 preliminary data. The publication of the revised 2003 data by county permits a better comparison of the two years after the revisions have been made to reflect more complete data.

The publication is available online at <http://www.nass.usda.gov/oh/>.  
After you get our home page - click on **Ohio Publications**  
Then click on **Farm Income icon**

**TABLE I**  
**CASH RECEIPTS FROM FARM MARKETINGS AND GOVERNMENT PAYMENTS,**  
**OHIO 1958-2004**

Year	Farm Marketings			Government payments	Total cash receipts & Gov. payments	Percent of all Commodities	
	Lvstk & Lvstk products	Crops	Total lvstk & crops			Lvstk & Lvstk products	Crops
	Thousand Dollars				Percent		
1958	636,933	344,456	981,389	33,922	1,015,311	64.9	35.1
1959	581,573	358,145	939,718	16,000	955,718	61.9	38.1
1960	601,934	399,759	1,001,693	19,028	1,020,721	60.1	39.9
1961	631,557	392,625	1,024,182	60,439	1,084,621	61.7	38.3
1962	635,356	415,902	1,051,258	59,520	1,110,778	60.4	39.6
1963	626,078	429,193	1,055,271	50,062	1,105,333	59.3	40.7
1964	640,480	454,904	1,095,384	55,906	1,151,290	58.5	41.5
1965	669,629	426,378	1,096,007	76,384	1,172,391	61.1	38.9
1966	746,822	542,261	1,289,083	81,202	1,370,285	57.9	42.1
1967	703,367	517,300	1,220,667	70,355	1,291,022	57.6	42.4
1968	704,520	558,417	1,262,937	94,712	1,357,649	55.8	44.2
1969	777,111	531,132	1,308,243	103,424	1,411,667	59.4	40.6
1970	778,106	599,739	1,377,845	89,613	1,467,458	56.5	43.5
1971	770,001	631,632	1,401,633	71,191	1,472,824	54.9	45.1
1972	863,471	714,094	1,577,565	89,578	1,667,143	54.7	45.3
1973	1,043,150	1,055,697	2,098,847	55,838	2,154,685	49.7	50.3
1974	967,934	1,568,245	2,536,179	7,419	2,543,598	38.2	61.8
1975	1,125,260	1,426,334	2,551,594	8,822	2,560,416	44.1	55.9
1976	1,157,275	1,578,777	2,736,052	7,297	2,743,349	42.3	57.7
1977	1,143,657	1,725,754	2,869,411	33,102	2,902,513	39.9	60.1
1978	1,290,652	1,759,152	3,049,804	24,305	3,074,109	42.3	57.7
1979	1,399,575	1,966,072	3,365,647	10,602	3,376,249	41.6	58.4
1980	1,372,093	2,820,714	4,192,807	9,403	4,202,210	32.7	67.3
1981	1,431,931	1,911,741	3,343,672	24,089	3,367,761	42.8	57.2
1982	1,529,863	2,065,845	3,595,708	42,398	3,638,106	42.5	57.5
1983	1,515,033	2,032,935	3,547,968	175,888	3,723,856	42.7	57.3
1984	1,626,471	2,036,082	3,662,553	232,204	3,894,757	44.4	55.6
1985	1,506,397	2,564,759	4,071,156	149,692	4,220,848	37.0	63.0
1986	1,578,914	1,963,756	3,542,670	268,972	3,811,642	44.6	55.4
1987	1,623,301	1,982,047	3,605,348	431,877	4,037,225	45.0	55.0
1988	1,594,952	2,216,738	3,811,690	381,900	4,193,590	41.8	58.2
1989	1,698,460	2,309,913	4,008,373	274,000	4,282,373	42.4	57.6
1990	1,806,238	2,578,344	4,384,582	197,006	4,581,588	41.2	58.8
1991	1,654,708	2,462,154	4,116,862	156,708	4,273,570	40.2	59.8
1992	1,553,464	2,559,999	4,113,463	166,122	4,279,585	37.8	62.2
1993	1,685,226	2,835,050	4,520,276	265,374	4,785,650	37.3	62.7
1994	1,552,747	2,871,729	4,424,476	117,041	4,541,517	35.1	64.9
1995	1,595,774	3,107,540	4,703,314	167,351	4,870,665	33.9	66.1
1996	1,959,850	2,851,149	4,810,999	163,109	4,974,108	40.7	59.3
1997	1,875,233	3,371,859	5,247,092	186,431	5,433,523	35.7	64.3
1998 2/	1,853,678	3,058,826	4,912,504	315,578	5,228,082	37.7	62.3
1999 2/	1,776,776	2,672,006	4,448,782	650,237	5,099,019	39.9	60.1
2000 2/	1,754,147	2,649,075	4,403,222	678,104	5,081,326	39.8	60.2
2001 2/	1,859,816	2,669,336	4,529,152	681,651	5,210,803	41.1	58.9
2002 2/	1,629,445	2,761,590	4,391,035	280,827	4,671,862	37.1	62.9
2003 2/	1,809,614	3,043,370	4,852,984	399,798	5,252,782	37.3	62.7
2004 1/	2,072,104	3,387,276	5,459,380	332,574	5,791,954	38.0	62.0

1/Preliminary. 2/Revised.

**TABLE II**  
**CASH RECEIPTS BY MAJOR COMMODITIES IN ORDER BY VALUE**  
**OHIO 2003 AND 2004**

Commodity or Group	2003 1/		Commodity or Group	2004	
	Cash Receipts From Sales	Percent of Total		Cash Receipts From Sales	Percent of Total
	Thousand Dollars	Percent		Thousand Dollars	Percent
Soybeans	1,106,855	22.8%	Soybeans	1,220,297	22.3%
Corn	764,733	15.8%	Corn	1,024,109	18.7%
Milk, wholesale	584,260	12.0%	Milk, wholesale	751,980	13.8%
Greenhouse/nursery	565,692	11.7%	Greenhouse/nursery	589,124	10.8%
Poultry/eggs 2/	536,224	11.0%	Poultry/eggs 2/	527,482	9.7%
Cattle and calves	326,442	6.7%	Hogs	402,719	7.4%
Hogs	276,864	5.7%	Cattle and calves	301,578	5.5%
Wheat	194,715	4.0%	Wheat	178,672	3.3%
Vegetables 3/	160,314	3.3%	Vegetables 3/	153,294	2.8%
Hay	134,000	2.8%	Hay	101,291	1.9%
Other lvstk & Pltry 4/	72,324	1.5%	Other lvstk & Pltry 4/	76,383	1.4%
Other crops 5/	51,954	1.1%	Other crops 5/	53,774	1.0%
Fruits/nuts 6/	38,122	0.8%	Fruits/nuts 6/	41,755	0.8%
Tobacco	16,877	0.3%	Tobacco	15,316	0.3%
Sheep and lambs	13,500	0.3%	Sheep and lambs	11,962	0.2%
Potatoes, Fall	7,268	0.2%	Potatoes, Fall	6,954	0.1%
Oats	2,840	0.1%	Oats	2,690	0.0%
<b>State</b>	<b>4,852,984</b>	<b>100.0%</b>	<b>State</b>	<b>5,459,380</b>	<b>100.0%</b>

1/ Revised. 2/ Includes eggs, farm chickens, broilers, and turkeys. 3/ Does not include potatoes. 4/ Includes turkey eggs, ducks, other poultry, honey beeswax, horses and mules, goats, and all other livestock except wool. 5/ Includes rye, barley, maple syrup, mushrooms, buckwheat, sorghum, speltz, sugar beets, sunflowers, popcorn, alfalfa seeds, all clover seeds, timothy seeds, and other seeds. 6/ Includes berries.

**TABLE III**  
**CASH RECEIPTS, BY COMMODITIES AND COMMODITY GROUPS**  
**OHIO 2003 AND 2004**

Commodity or Group	2003 1/		2004	
	Cash Receipts From Sales	Percent of All Commodities 2/	Cash Receipts From Sales	Percent of All Commodities 2/
	Thousand Dollars	Percent	Thousand Dollars	Percent
All Commodities	4,852,984	100.0%	5,459,380	100.0%
Livestock and products	1,809,614	37.3%	2,072,104	38.0%
Meat animals	616,594	12.7%	715,952	13.1%
Cattle and calves	326,442	6.7%	301,578	5.5%
Hogs	276,864	5.7%	402,719	7.4%
Sheep and lambs	13,288	0.3%	11,655	0.2%
Dairy products	584,260	12.0%	751,980	13.8%
Milk, wholesale	584,260	12.0%	751,980	13.8%

**TABLE III (Continued)**  
**CASH RECEIPTS, BY COMMODITIES AND COMMODITY GROUPS**  
**OHIO 2003 AND 2004**

Commodity or Group	2003 1/		2004	
	Cash Receipts From Sales	Percent of All Commodities 2/	Cash Receipts From Sales	Percent of All Commodities 2/
	Thousand Dollars	Percent	Thousand Dollars	Percent
Poultry/eggs 3/	566,539	11.7%	558,810	10.2%
Broilers	78,925	1.6%	101,070	1.9%
Chicken eggs	374,458	7.7%	334,040	6.1%
Turkeys	82,797	1.7%	92,324	1.7%
Other poultry	30,359	0.6%	31,376	0.6%
Misc livestock	42,221	0.9%	45,362	0.8%
Honey	1,050	*	1,392	*
Other livestock 4/	41,171	0.8%	43,970	0.8%
Crops	3,043,370	62.7%	3,387,276	62.0%
Food grains	194,715	4.0%	178,672	3.3%
Wheat	194,715	4.0%	178,672	3.3%
Feed crops	902,144	18.6%	1,128,485	20.7%
Barley	571	*	395	*
Corn	764,733	15.8%	1,024,109	18.7%
Hay	134,000	2.8%	101,291	1.9%
Oats	2,840	0.1%	2,690	*
Tobacco	16,877	0.3%	15,316	0.3%
Oil crops 5/	1,107,011	22.8%	1,220,455	22.4%
Soybeans	1,106,855	22.8%	1,220,297	22.3%
Vegetables	167,582	3.5%	160,248	2.9%
Potatoes, Fall	7,268	0.2%	6,954	0.1%
Cabbage, fresh	6,138	0.1%	5,932	0.1%
Corn, sweet, fresh	29,038	0.6%	27,114	0.5%
Cucumbers, processing	9,416	0.2%	13,424	0.2%
Onions, storage	1,658	*	9/	*
Peppers, green, fresh	15,989	0.3%	10,078	0.2%
Tomatoes	61,380	1.3%	63,451	1.2%
Fresh	47,933	1.0%	49,549	0.9%
Processing	13,447	0.3%	13,902	0.3%
Squash	3,931	0.1%	2,911	0.1%
Misc. vegetables 6/	32,764	0.7%	30,384	0.6%
Fruits/nuts	38,122	0.8%	41,755	0.8%
Apples	21,353	0.4%	24,779	0.5%
Grapes	2,685	0.1%	2,208	*
Peaches	5,478	0.1%	5,005	0.1%
Strawberries, Spring	4,560	0.1%	5,092	0.1%
Misc. fruits & nuts & berries 7/	4,046	0.1%	4,671	0.1%
All other crops	616,919	12.7%	642,345	11.8%
Greenhouse/nursery	565,692	11.7%	589,124	10.8%
Christmas trees	20,881	0.4%	25,892	0.5%
Maple products	1,790	*	1,790	*
Misc. Crops 8/	49,437	1.0%	51,431	0.9%

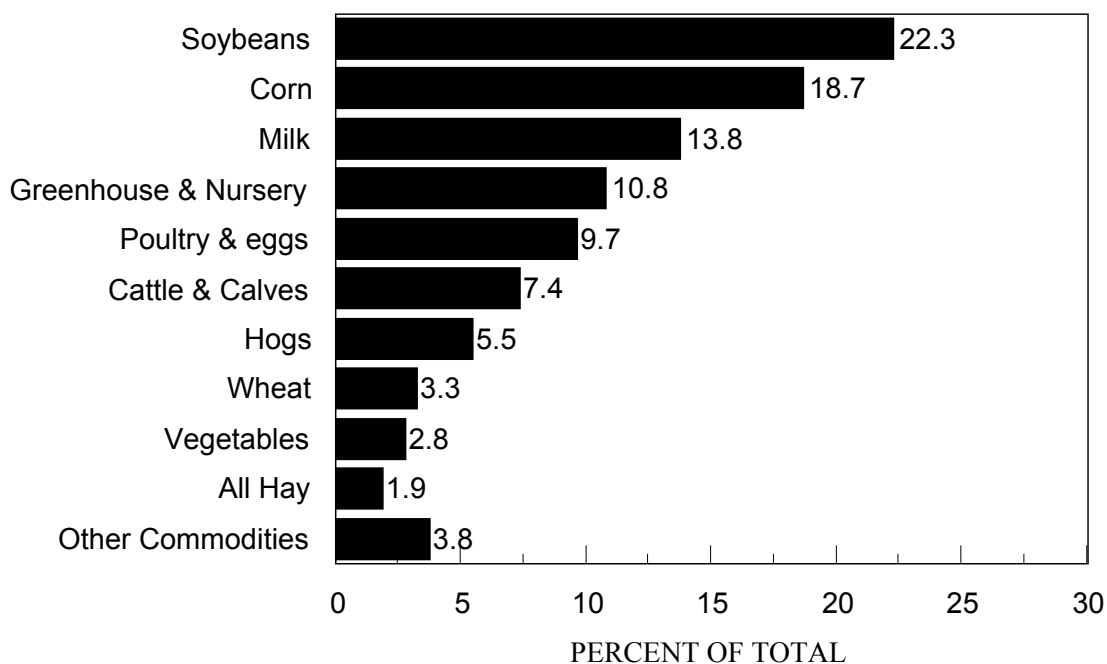
1/ Revised. 2/ Percents may not add to group totals because of method of computing and rounding. 3/ Turkey eggs, pheasants, ducks, geese, pigeons, and quail are combined with other poultry. 4/ Includes goats & mohair, beeswax, mink pelts, rabbits, aquaculture, chinchillas, buffalo, beefalo, wool, and horses/mules. 5/ Includes sunflowers and canola. 6/ Includes melons, processing snap beans, processing carrots, fresh market and processing misc. vegetables, and vegetables under glass. 7/ Includes cherries, pears, plums and prunes, blueberries, raspberries, black berries, other berries, and misc. fruit and nuts. 8/ Includes alfalfa seed, timothy seed, sweet clover seed, red clover seed, other seeds, dry beans, buck wheat, rye, wheat straw, sorghum, speltz, popcorn and mushrooms. 9/ Not published to avoid disclosure of individual information.

\* / Less than 0.05%.

**TABLE IV**  
**CASH RECEIPTS FROM FARM MARKETINGS (INCLUDING CCC LOANS)**  
**BY MONTHS, OHIO AND UNITED STATES 2003 AND 2004**

	Ohio		United States	
	2003	2004	2003	2004
Thousand Dollars				
January	349,838	582,017	17,585,120	21,127,061
February	311,746	428,873	14,164,641	16,474,397
March	327,972	442,884	15,831,830	19,072,392
April	333,876	373,812	15,879,881	17,128,378
May	292,231	308,162	16,110,789	17,827,249
June	277,270	302,344	16,671,945	17,420,613
July	385,321	395,547	17,293,789	18,676,854
August	352,958	335,273	16,966,944	18,921,766
September	401,892	415,591	19,044,670	20,626,482
October	820,279	877,405	23,907,164	27,339,382
November	567,889	564,347	22,415,886	24,863,697
December	431,712	433,125	20,719,374	21,763,131
<b>Total</b>	<b>4,852,984</b>	<b>5,459,380</b>	<b>216,592,033</b>	<b>241,241,402</b>

**FIGURE I**  
**2004 OHIO FARM CASH RECEIPTS FROM TABLE II DATA**

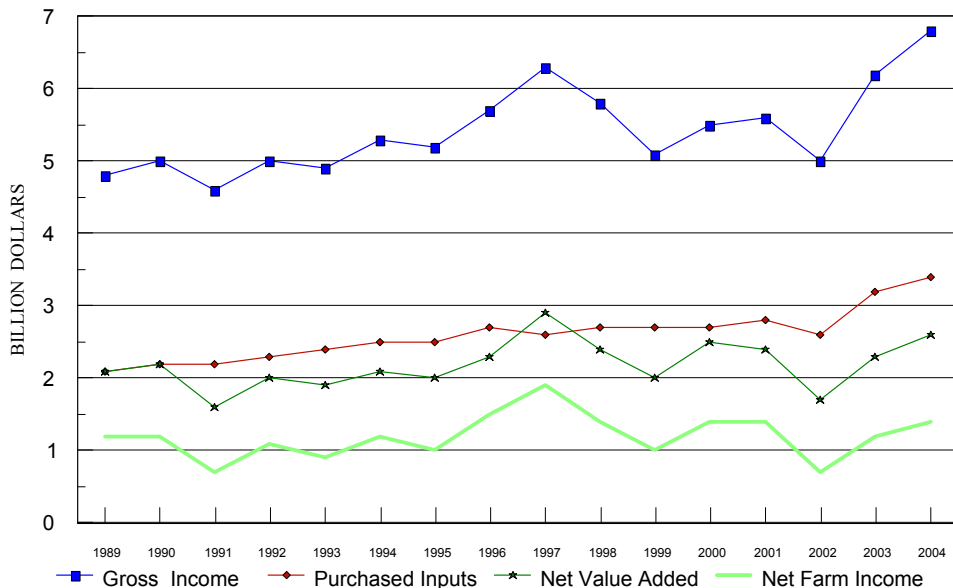


**TABLE V**  
**FARM ASSETS, DEBTS AND RATIOS, OHIO 2000-2003, U.S. 2002 and 2003**

	Ohio				United States	
	2000	2001	2002	2003	2002	2003
	Thousand Dollars					
Farm assets	38,537,394	40,906,203	41,737,399	44,513,890	1,304,049,154	1,378,757,252
Real estate	30,835,075	33,345,140	34,580,145	36,952,343	1,045,654,983	1,111,777,190
Livestock and poultry 1/	1,183,338	1,276,524	1,167,288	1,276,524	75,621,261	78,540,333
Machinery and motor vehicles 2/	3,347,278	3,386,514	3,420,824	3,507,170	93,581,678	95,943,800
Crops 3/	1,080,595	957,224	569,514	706,687	23,113,966	24,429,028
Purchased inputs	213,448	183,655	245,549	245,319	5,631,988	5,626,719
Financial	1,877,659	1,757,146	1,754,079	1,825,847	60,445,278	62,440,181
Farm debt 4/	4,239,460	4,492,052	4,739,285	4,898,469	193,311,506	197,998,175
Real estate	2,453,048	2,602,576	2,828,267	2,971,196	103,356,461	107,981,081
Farm Credit System	930,489	1,029,600	1,185,058	1,256,491	37,815,366	40,094,818
Farm Service Agency	63,040	62,055	58,965	52,798	3,180,655	2,847,985
Commercial banks	941,589	983,521	1,046,100	1,111,467	33,059,777	35,125,572
Life insurance companies	89,824	91,059	92,811	94,238	11,420,945	11,596,617
Individuals and others	428,105	436,341	445,333	456,202	17,879,718	18,316,089
CCC storage & drying loans	0	0	0	0	0	0
Nonreal estate	1,786,412	1,889,476	1,911,018	1,927,273	89,955,045	90,017,094
Farm Credit System	582,241	670,937	688,582	701,212	19,735,166	20,097,163
Farm Service Agency	36,837	36,012	34,468	33,030	3,973,021	3,807,230
Commercial banks	649,474	651,949	642,080	630,426	44,343,629	43,538,727
Individuals and others	517,860	530,578	545,888	562,605	21,903,229	22,573,974
Equity	34,297,935	36,414,152	36,998,114	39,615,421	1,110,737,649	1,180,759,077
Ratio:						
Debt/equity	12.4	12.3	12.8	12.4	17.4	16.8
Debt/assets	11.0	11.0	11.4	11.0	14.8	14.4

1/ Excludes horses, mules, and broilers. 2/ Includes only farm share value for trucks and autos. 3/ All non-CCC crops held on farms plus the value above loan rate for crops held under CCC. 4/ Excludes debt for nonfarm purposes.

FIGURE II  
OHIO GROSS AND NET FARM INCOME



**TABLE VI**  
**FARM INCOME STATEMENT OF OHIO, 2002-2004 AND U.S. 2003 and 2004**

Item 1/	Ohio			United States	
	2002	2003	2004	2003	2004
	Thousand dollars				
Value of crop production	2,314,592	3,262,983	3,495,475	109,436,837	124,000,937
Food grains	162,098	194,715	178,672	8,023,363	9,127,838
Feed crops	835,084	902,144	1,128,485	24,738,592	28,237,936
Cotton	0	0	0	6,527,296	5,405,215
Oil crops	907,472	1,107,011	1,220,455	18,671,097	19,787,369
Tobacco	14,208	16,877	15,316	1,552,586	1,519,104
Fruits and tree nuts	31,202	38,122	41,755	13,419,104	15,462,980
Vegetables	196,762	167,582	160,248	17,401,367	17,256,235
All other crops	614,764	616,919	642,345	20,665,086	20,963,737
Home consumption	6,178	4,115	2,618	131,034	103,705
Value of inventory adjustment 2/	(453,176)	215,498	105,581	(1,692,688)	6,136,818
Value of livestock production	1,609,924	1,828,269	2,137,419	104,916,875	124,557,651
Meat animals	562,881	616,594	715,952	56,212,527	62,157,933
Dairy products	560,700	584,260	751,980	21,238,737	27,367,857
Poultry and eggs	463,336	566,539	558,810	23,882,783	29,529,826
Miscellaneous livestock	42,528	42,221	45,362	4,259,494	4,425,373
Home consumption	3,731	6,054	10,018	143,603	196,422
Value of inventory adjustment 2/	(23,252)	12,601	55,297	(820,269)	880,240
Revenues from services and forestry	1,104,381	1,115,733	1,167,662	28,270,329	30,455,511
Machine hire and customwork	55,783	17,737	35,510	2,992,727	3,459,521
Forest products sold	251,390	228,764	283,668	2,224,958	2,409,371
Other farm income	261,674	313,151	274,753	10,486,358	11,313,059
Gross imputed rental value of farm dwellings	535,534	556,081	573,731	12,566,286	13,273,560
<b>Value of agricultural sector production</b>	<b>5,028,898</b>	<b>6,206,984</b>	<b>6,800,556</b>	<b>242,624,040</b>	<b>279,014,098</b>
<b>Less: Purchased inputs</b>	<b>2,573,010</b>	<b>3,164,454</b>	<b>3,366,995</b>	<b>130,001,673</b>	<b>136,498,360</b>
Farm origin	843,895	1,098,254	1,190,134	53,712,002	57,123,645
Feed purchased	471,316	649,103	739,554	27,514,979	30,033,673
Livestock and poultry purchased	63,944	78,433	85,158	16,771,176	17,564,131
Seed purchased	308,635	370,718	365,422	9,425,847	9,525,841
Manufactured inputs	775,266	866,446	952,457	28,580,987	31,378,215
Fertilizers and lime	326,253	358,212	416,779	10,022,069	11,428,147
Pesticides	234,723	253,104	263,435	8,416,767	8,516,120
Petroleum fuel and oils	149,523	196,894	204,847	6,801,504	8,197,282
Electricity	64,767	58,236	67,396	3,340,647	3,236,666
Other purchased inputs	953,849	1,199,754	1,224,404	47,708,684	47,996,500
Repair and maintenance of capital items	361,941	350,839	428,964	10,261,634	13,124,777
Machine hire and customwork	67,375	52,059	47,798	3,537,613	3,655,184
Marketing, storage, and transportation expenses	73,555	105,983	148,422	7,413,014	7,097,208
Contract labor	13,998	25,097	28,845	3,180,850	2,632,933
Miscellaneous expenses	436,980	665,776	570,375	23,315,573	21,486,398

**TABLE VI (Continued)**  
**FARM INCOME STATEMENT OF OHIO, 2002-2004 AND U.S. 2003 and 2004**

Item 1/	Ohio			United States	
	2002	2003	2004	2003	2004
	Thousand dollars				
plus: Net government transactions	31,133	96,151	35,724	9,880,969	5,760,856
+ Direct Government payments	280,827	399,798	332,574	17,209,246	13,303,598
- Motor vehicle registration and licensing fees	16,242	10,227	9,073	521,954	536,240
- Property taxes	233,452	293,420	287,777	6,806,323	7,006,502
Gross value added	2,487,021	3,138,681	3,469,286	122,503,336	148,276,594
less: Capital consumption	825,024	839,391	882,814	21,267,039	22,339,554
Net value added	1,661,997	2,299,290	2,586,472	101,236,297	125,937,040
less: Payments to stakeholders	971,850	1,123,453	1,169,173	41,736,496	43,397,399
Employee compensation (total hired labor)	290,885	357,436	422,755	18,779,541	20,583,496
Net rent received by nonoperator landlords	354,308	451,034	422,779	10,284,449	9,749,856
Real estate and nonreal estate interest	326,657	314,983	323,639	12,672,506	13,064,047
<b>Net farm income</b>	<b>690,147</b>	<b>1,175,837</b>	<b>1,417,299</b>	<b>59,499,801</b>	<b>82,539,641</b>

1/ Value of agricultural sector production is the gross value of the commodities and services produced within a year. Net value-added is the sector's contribution to the National economy and is the sum of the of the income from production earned by all factors-of-production, regardless of ownership. Net farm income is the farm operators' share of income from the sector's production activities. The concept presented is consistent with that employed by the Organization for Economic Cooperation and Development. 2/ A positive value of inventory change represents current-year production not sold by December 31. A negative value is an offset to production from prior years included in current-year sales.

**TABLE VII**  
**CASH RECEIPTS BY COUNTIES, OHIO 2003 REVISED AND 2004 PRELIMINARY**

County	Cash Receipts From Farm Marketings						Average Receipts			
	Lvstck & Lvstck Products		Crops		Total Cash Receipts 1/		Per Farm		Per Acre	
	2003	2004	2003	2004	2003	2004	2003	2004	2003	2004
	Thousand Dollars						Dollars			
Adams	14,003	15,778	15,477	14,624	29,479	30,402	22,333	23,207	148	153
Allen	10,297	14,762	43,056	49,749	53,353	64,511	55,576	67,199	278	336
Ashland	32,703	37,605	26,881	28,410	59,584	66,015	54,664	61,125	357	395
Ashtabula	21,919	24,920	20,248	20,100	42,167	45,020	32,943	35,172	250	266
Athens	5,365	5,729	3,142	3,077	8,507	8,806	12,889	13,342	88	91
Auglaize	37,131	44,454	47,263	60,252	84,394	104,706	82,740	103,669	393	487
Belmont	10,284	10,593	8,227	8,906	18,511	19,499	24,682	25,999	129	136
Brown	7,092	6,909	29,288	30,005	36,380	36,914	25,985	26,557	169	172
Butler	10,756	11,336	23,713	27,559	34,469	38,895	32,827	37,043	246	278
Carroll	8,834	9,672	57,745	60,598	66,579	70,270	88,772	93,693	541	571
Champaign	11,027	12,799	46,366	60,085	57,393	72,885	61,056	78,371	272	345
Clark	8,024	10,471	67,908	75,992	75,932	86,463	99,911	115,284	439	500
Clermont	3,628	3,136	19,322	21,086	22,950	24,222	23,660	24,971	209	220
Clinton	6,959	8,306	47,738	58,999	54,697	67,306	67,527	83,094	236	290
Columbiana	30,413	34,207	16,467	18,771	46,880	52,977	39,729	44,896	330	373
Coshocton	27,792	32,480	11,879	13,769	39,671	46,249	38,145	44,902	227	264
Crawford	16,655	20,219	58,470	62,539	75,125	82,757	108,877	119,938	327	360
Cuyahoga	308	324	11,979	10,532	12,287	10,856	76,794	67,849	2,457	2,171
Darke	179,877	189,036	82,919	99,210	262,796	288,246	148,472	163,776	773	848
Defiance	10,885	12,937	43,234	48,471	54,119	61,407	55,224	62,661	263	298
Delaware	6,639	8,418	40,046	48,444	46,684	56,862	59,852	72,900	280	340
Erie	2,790	2,674	28,927	35,337	31,717	38,011	81,325	97,465	345	413
Fairfield	10,200	11,549	43,506	46,917	53,706	58,466	45,903	50,402	270	294
Fayette	5,183	5,555	55,015	68,284	60,198	73,839	125,412	153,831	277	340
Franklin	2,891	3,940	31,799	28,733	34,690	32,672	61,947	58,343	390	367
Fulton	20,968	25,743	70,284	78,059	91,251	103,801	115,508	133,079	447	509
Gallia	7,656	7,601	4,791	4,376	12,447	11,977	13,384	12,879	107	103
Geauga	8,750	9,740	10,577	11,334	19,327	21,074	20,132	21,952	302	329
Greene	6,388	7,769	47,285	54,351	53,673	62,121	65,455	75,757	303	351
Guernsey	8,872	9,085	7,727	7,725	16,599	16,810	18,241	18,678	121	123
Hamilton	1,971	1,869	13,030	13,771	15,001	15,640	37,504	39,099	469	489
Hancock	9,288	10,879	69,428	78,881	78,716	89,760	80,322	92,536	286	326
Hardin	52,038	55,740	48,322	60,452	100,360	116,193	119,476	138,325	400	463
Harrison	10,108	10,800	2,719	2,232	12,827	13,032	28,505	28,959	100	102
Henry	6,790	10,501	69,245	75,287	76,035	85,788	90,518	102,128	315	356
Highland	9,345	10,643	35,951	36,493	45,296	47,136	32,823	34,406	174	181
Hocking	1,360	1,656	2,597	2,397	3,957	4,053	9,202	9,426	73	75
Holmes	90,818	109,007	13,193	14,503	104,011	123,511	57,784	69,000	533	633
Huron	13,104	16,651	51,114	56,804	64,218	73,455	74,672	85,413	282	322
Jackson	3,680	3,550	2,880	2,753	6,560	6,303	14,261	13,703	82	79
Jefferson	5,112	5,812	3,264	3,009	8,375	8,821	18,207	19,176	116	123
Knox	23,678	27,001	36,331	39,254	60,009	66,255	48,007	53,432	283	313
Lake	666	732	54,209	54,830	54,875	55,562	166,287	168,369	2,888	2,924
Lawrence	2,715	2,579	2,697	2,376	5,412	4,955	8,456	7,742	85	77

**TABLE VII (Continued)**  
**CASH RECEIPTS BY COUNTIES, OHIO 2003 REVISED AND 2004 PRELIMINARY**

County	Cash Receipts From Farm Marketings						Average Receipts			
	Lvstck & Lvstck Products		Crops		Total Cash Receipts 1/		Per Farm		Per Acre	
	2003	2004	2003	2004	2003	2004	2003	2004	2003	2004
	Thousand Dollars						Dollars			
Licking	71,918	68,827	54,523	63,432	126,440	132,259	85,433	89,972	529	553
Logan	16,723	19,737	38,481	46,995	55,204	66,732	53,081	64,165	246	298
Lorain	14,550	17,305	78,878	77,033	93,429	94,338	96,318	97,256	615	621
Lucas	2,429	3,250	51,988	52,998	54,417	56,248	132,724	140,621	707	730
Madison	13,194	20,772	71,086	85,403	84,279	106,175	115,451	145,445	337	425
Mahoning	15,009	17,734	13,245	13,902	28,254	31,636	43,468	48,671	362	406
Marion	11,365	20,122	50,762	49,644	62,127	69,766	119,476	134,165	296	332
Medina	12,940	15,254	27,668	27,325	40,608	42,580	34,414	36,084	344	361
Meigs	5,199	5,330	18,720	16,278	23,919	21,608	43,488	39,287	272	246
Mercer	248,711	275,775	53,118	71,544	301,829	347,318	237,661	275,650	1,118	1,286
Miami	8,706	10,741	45,794	56,028	54,499	66,769	50,934	62,401	282	346
Monroe	7,528	7,936	1,747	1,473	9,275	9,409	14,270	14,475	85	86
Montgomery	4,760	7,289	40,453	45,015	45,213	52,304	54,474	63,017	423	489
Morgan	7,750	8,654	3,168	2,883	10,919	11,537	21,409	22,622	106	112
Morrow	12,454	14,723	33,975	36,134	46,429	50,857	53,987	59,136	264	289
Muskingum	13,033	13,553	11,811	11,464	24,844	25,017	20,364	20,675	130	131
Noble	4,145	3,927	1,806	1,547	5,951	5,474	9,918	9,124	56	52
Ottawa	2,094	2,543	34,645	33,107	36,739	35,650	70,652	68,558	331	321
Paulding	23,054	27,979	50,852	58,443	73,906	86,422	113,701	132,957	319	373
Perry	4,639	4,874	12,041	12,269	16,680	17,143	26,062	26,786	172	177
Pickaway	12,706	15,760	69,551	79,028	82,257	94,787	104,122	119,984	302	348
Pike	4,583	4,601	5,618	5,701	10,201	10,302	20,401	20,604	119	120
Portage	9,123	10,053	20,920	22,151	30,042	32,204	31,294	33,546	316	339
Preble	16,486	20,068	44,457	53,921	60,942	73,989	57,493	70,466	300	364
Putnam	28,350	38,449	99,292	103,365	127,642	141,814	94,550	105,831	416	462
Richland	23,537	28,155	30,058	31,793	53,595	59,948	49,625	56,026	333	372
Ross	7,772	7,907	37,596	43,075	45,367	50,982	47,755	53,665	181	203
Sandusky	5,032	5,371	59,126	67,898	64,158	73,269	80,198	91,586	322	368
Scioto	9,217	8,372	8,872	6,702	18,089	15,074	25,478	21,232	183	152
Seneca	9,684	13,778	62,890	71,597	72,574	85,375	60,987	72,351	254	299
Shelby	36,968	46,294	40,063	49,684	77,031	95,978	75,521	94,096	369	459
Stark	46,453	56,696	28,140	30,684	74,593	87,381	56,085	66,198	514	603
Summit	1,380	1,429	9,275	8,263	10,656	9,692	28,799	26,195	533	485
Trumbull	12,432	14,375	18,942	21,533	31,374	35,908	31,063	35,552	253	290
Tuscarawas	47,767	55,315	15,087	16,364	62,854	71,679	58,742	66,990	403	459
Union	40,112	40,387	41,945	50,944	82,057	91,331	80,448	90,426	336	374
Van Wert	12,809	16,562	56,765	72,043	69,574	88,604	102,315	130,300	279	356
Vinton	1,011	1,186	982	832	1,993	2,018	8,304	8,408	43	44
Warren	4,164	4,218	30,003	34,793	34,167	39,011	33,172	38,246	269	307
Washington	12,576	13,999	9,972	8,883	22,547	22,882	23,734	24,342	159	161
Wayne	124,034	150,151	45,409	42,739	169,444	192,890	89,653	102,601	654	745
Williams	19,485	24,407	44,958	46,012	64,443	70,419	59,122	64,604	304	332
Wood	13,147	13,777	97,750	104,880	110,898	118,657	104,621	113,006	355	380
Wyandot	45,623	49,302	44,683	52,141	90,306	101,443	148,043	169,071	436	490
<b>State</b>	<b>1,809,614</b>	<b>2,072,104</b>	<b>3,043,370</b>	<b>3,387,276</b>	<b>4,852,984</b>	<b>5,459,380</b>	<b>62,538</b>	<b>70,627</b>	<b>332</b>	<b>374</b>

1/ Government payments are not estimated by county but appear in Table 1 on page 3. These payments account for 5.7 percent of total cash receipts.

**TABLE VIII**  
**CASH RECEIPTS FROM FARM MARKETINGS, BY COMMODITIES AND**  
**COMMODITY GROUPS, BY COUNTY, OHIO 2003 REVISED**

County	Cash Receipts From Livestock and Livestock Products				
	Total Livestock	Milk	Cattle & Calves	Hogs & Pigs	Poultry & Other Livestock 1/
	2003	2003	2003	2003	2003
	Thousand Dollars				
Adams	14,003	5,856	6,181	1,421	545
Allen	10,297	1,454	2,141	6,248	455
Ashland	32,703	19,375	7,305	3,370	2,653
Ashtabula	21,919	15,262	5,298	383	977
Athens	5,365	2,017	2,622	146	579
Auglaize	37,131	13,860	5,566	9,253	8,452
Belmont	10,284	4,087	5,673	73	451
Brown	7,092	1,755	4,335	528	474
Butler	10,756	3,694	4,549	1,694	819
Carroll	8,834	4,061	4,067	109	597
Champaign	11,027	3,668	3,318	3,497	544
Clark	8,024	524	4,977	1,985	538
Clermont	3,628	956	1,739	55	878
Clinton	6,959	1,323	1,712	3,515	408
Columbiana	30,413	20,200	6,903	1,330	1,979
Coshocton	27,792	6,537	6,074	6,667	8,515
Crawford	16,655	2,895	2,515	9,599	1,645
Cuyahoga	308	0	27	18	263
Darke	179,877	18,956	7,706	25,009	128,207
Defiance	10,885	6,275	2,488	1,913	210
Delaware	6,639	1,467	1,418	3,005	748
Erie	2,790	1,166	829	419	376
Fairfield	10,200	2,279	4,469	2,678	775
Fayette	5,183	498	1,365	2,787	533
Franklin	2,891	878	535	801	677
Fulton	20,968	4,166	4,790	11,712	300
Gallia	7,656	1,742	5,218	219	477
Geauga	8,750	5,240	1,953	164	1,393
Greene	6,388	747	2,141	2,605	896
Guernsey	8,872	1,939	5,405	583	946
Hamilton	1,971	537	642	55	738
Hancock	9,288	2,961	1,151	4,572	605
Hardin	52,038	6,118	2,542	10,455	32,923
Harrison	10,108	5,017	4,121	109	861
Henry	6,790	3,838	1,258	1,494	200
Highland	9,345	2,122	5,271	1,202	750
Hocking	1,360	0	856	128	376
Holmes	90,818	27,890	12,790	3,333	46,805
Huron	13,104	7,899	2,622	2,058	524
Jackson	3,680	341	3,024	18	298
Jefferson	5,112	2,135	2,488	146	342
Knox	23,678	13,126	6,101	2,441	2,011
Lake	666	210	187	36	233
Lawrence	2,715	406	1,820	91	398

**TABLE VIII (Continued)**  
**CASH RECEIPTS FROM FARM MARKETINGS, BY COMMODITIES AND**  
**COMMODITY GROUPS, BY COUNTY, OHIO 2003 REVISED**

County	Cash Receipts From Crops					
	Total Crops	Corn	Soybeans	Wheat	Oats & Hay	Other Crops 2/
	2003	2003	2003	2003	2003	2003
	Thousand Dollars					
Adams	15,477	2,379	3,726	359	1,988	7,025
Allen	43,056	13,439	20,800	4517	1,009	3,291
Ashland	26,881	6,409	7,893	1825	5,434	5,321
Ashtabula	20,248	1,917	4,038	979	2,851	10,462
Athens	3,142	152	341	101	1,098	1,450
Auglaize	47,263	13,211	22,150	4626	1,187	6,090
Belmont	8,227	108	20	14	1,672	6,413
Brown	29,288	3,238	16,687	412	1,117	7,834
Butler	23,713	6,696	7,965	936	1,057	7,059
Carroll	57,745	982	1,245	250	1,619	53,649
Champaign	46,366	17,980	21,493	1318	1,110	4,465
Clark	67,908	15,004	18,551	1086	1,030	32,237
Clermont	19,322	1,850	9,301	357	598	7,215
Clinton	47,738	16,046	27,188	1110	451	2,942
Columbiana	16,467	2,754	2,652	933	2,866	7,262
Coshocton	11,879	3,064	3,689	345	1,689	3,092
Crawford	58,470	19,788	28,514	5330	1,368	3,470
Cuyahoga	11,979	12	21	13	88	11,845
Darke	82,919	32,972	37,104	4573	1,475	6,795
Defiance	43,234	11,897	22,649	5490	1,798	1,399
Delaware	40,046	8,752	16,526	2444	1,027	11,297
Erie	28,927	6,303	6,155	1879	901	13,689
Fairfield	43,506	16,866	18,369	2507	1,800	3,964
Fayette	55,015	20,598	30,118	2115	915	1,270
Franklin	31,799	5,940	8,434	1166	587	15,672
Fulton	70,284	23,566	21,979	4830	1,576	18,333
Gallia	4,791	343	524	77	1,158	2,689
Geauga	10,577	278	161	223	1,397	8,519
Greene	47,285	12,373	19,221	958	812	13,920
Guernsey	7,727	395	321	25	1,605	5,380
Hamilton	13,030	1,106	1,036	101	265	10,522
Hancock	69,428	21,886	32,766	8988	1,606	4,181
Hardin	48,322	14,508	26,499	3919	1,109	2,287
Harrison	2,719	345	159	29	1,440	747
Henry	69,245	19,675	25,524	8264	2,922	12,860
Highland	35,951	5,927	21,042	1520	1,349	6,113
Hocking	2,597	238	500	61	388	1,410
Holmes	13,193	3,764	2,999	523	2,933	2,975
Huron	51,114	14,038	18,998	5215	1,664	11,199
Jackson	2,880	356	374	94	1,132	924
Jefferson	3,264	174	127	46	1,118	1,799
Knox	36,331	11,715	12,055	991	3,415	8,155
Lake	54,209	37	41	31	317	53,783
Lawrence	2,697	262	335	14	404	1,683

**TABLE VIII (Continued)**  
**CASH RECEIPTS FROM FARM MARKETINGS, BY COMMODITIES AND**  
**COMMODITY GROUPS, BY COUNTY, OHIO 2003 REVISED**

County	Cash Receipts From Livestock and Livestock Products				
	Total Livestock	Milk	Cattle & Calves	Hogs & Pigs	Poultry & Other Livestock 1/
	2003	2003	2003	2003	2003
	Thousand Dollars				
Licking	71,918	5,620	5,726	4,372	56,200
Logan	16,723	8,489	3,398	4,044	793
Lorain	14,550	9,877	2,783	1,257	633
Lucas	2,429	197	268	1,712	253
Madison	13,194	6,000	2,703	4,007	484
Mahoning	15,009	9,982	3,131	528	1,368
Marion	11,365	3,996	1,605	5,209	555
Medina	12,940	8,083	3,345	383	1,130
Meigs	5,199	1,900	2,836	200	263
Mercer	248,711	46,715	12,630	33,533	155,834
Miami	8,706	3,341	2,167	2,423	775
Monroe	7,528	3,301	3,746	164	317
Montgomery	4,760	1,140	1,552	1,512	557
Morgan	7,750	2,686	4,014	638	414
Morrow	12,454	4,651	2,943	3,698	1,162
Muskingum	13,033	3,196	6,957	1,676	1,203
Noble	4,145	288	3,371	55	431
Ottawa	2,094	917	321	692	164
Paulding	23,054	9,183	1,365	2,131	10,375
Perry	4,639	1,179	2,943	109	408
Pickaway	12,706	3,969	2,810	5,464	463
Pike	4,583	1,769	2,221	291	302
Portage	9,123	5,227	2,194	237	1,465
Preble	16,486	2,882	4,602	8,251	750
Putnam	28,350	9,733	3,211	9,872	5,533
Richland	23,537	13,781	5,646	2,750	1,359
Ross	7,772	1,677	4,736	820	539
Sandusky	5,032	1,664	1,793	856	719
Scioto	9,217	1,218	3,050	73	4,875
Seneca	9,684	2,476	2,810	3,916	483
Shelby	36,968	16,637	5,673	11,803	2,855
Stark	46,453	22,584	6,636	1,275	15,958
Summit	1,380	511	321	73	476
Trumbull	12,432	7,153	4,067	237	975
Tuscarawas	47,767	27,379	8,295	1,494	10,600
Union	40,112	3,157	3,425	8,379	25,151
Van Wert	12,809	6,026	1,284	2,131	3,368
Vinton	1,011	0	749	128	134
Warren	4,164	445	1,927	565	1,227
Washington	12,576	5,633	5,646	710	586
Wayne	124,034	77,264	23,172	9,126	14,473
Williams	19,485	12,628	3,666	2,022	1,169
Wood	13,147	2,803	1,177	1,148	8,019
Wyandot	45,623	1,428	1,338	8,980	33,878
<b>State</b>	<b>1,809,614</b>	<b>584,260</b>	<b>326,442</b>	<b>276,864</b>	<b>622,048</b>

1/ Includes sheep, lamb, broilers, farm chickens, chicken eggs, turkeys, other poultry, honey, horses, mules, wool and other livestock.

**TABLE VIII (Continued)**  
**CASH RECEIPTS FROM FARM MARKETINGS, BY COMMODITIES AND**  
**COMMODITY GROUPS, BY COUNTY, OHIO 2003 REVISED**

County	Cash Receipts From Crops					
	Total Crops	Corn	Soybeans	Wheat	Oats & Hay	Other Crops 2/
	2003	2003	2003	2003	2003	2003
	Thousand Dollars					
Licking	54,523	11,244	13,542	1211	3,001	25,525
Logan	38,481	14,106	18,918	2143	1,346	1,967
Lorain	78,878	4,476	8,557	2035	3,587	60,222
Lucas	51,988	7,201	8,325	1702	504	34,256
Madison	71,086	26,327	33,328	2149	807	8,474
Mahoning	13,245	1,394	2,497	618	1,165	7,571
Marion	50,762	17,416	28,131	3291	689	1,234
Medina	27,668	1,983	4,546	1153	1,957	18,030
Meigs	18,720	237	224	29	918	17,312
Mercer	53,118	20,899	22,764	5224	2,522	1,709
Miami	45,794	18,881	18,949	1631	795	5,538
Monroe	1,747	107	44	15	1,151	429
Montgomery	40,453	7,423	10,400	781	490	21,358
Morgan	3,168	356	235	30	1,173	1,374
Morrow	33,975	10,889	16,417	2730	1,132	2,806
Muskingum	11,811	2,064	2,401	317	2,514	4,515
Noble	1,806	109	22	0	1,102	572
Ottawa	34,645	4,781	12,564	3609	1,128	12,563
Paulding	50,852	13,070	25,030	9935	961	1,856
Perry	12,041	2,517	2,515	508	769	5,731
Pickaway	69,551	26,040	31,134	4056	1,255	7,065
Pike	5,618	1,039	2,456	90	727	1,306
Portage	20,920	1,402	3,356	671	1,456	14,034
Preble	44,457	17,329	22,950	1495	812	1,871
Putnam	99,292	21,205	35,279	11556	4,550	26,702
Richland	30,058	5,968	9,215	1902	3,970	9,003
Ross	37,596	11,317	19,445	2645	2,173	2,017
Sandusky	59,126	15,824	20,004	4016	2,232	17,050
Scioto	8,872	1,603	4,141	83	799	2,246
Seneca	62,890	18,449	25,977	8201	2,016	8,247
Shelby	40,063	14,666	19,102	3259	1,787	1,249
Stark	28,140	3,366	5,804	1115	2,478	15,376
Summit	9,275	249	342	60	264	8,358
Trumbull	18,942	1,771	4,564	880	1,590	10,137
Tuscarawas	15,087	1,839	2,792	358	2,058	8,042
Union	41,945	12,683	22,072	2939	1,010	3,240
Van Wert	56,765	16,911	29,253	5045	1,081	4,476
Vinton	982	123	214	15	549	81
Warren	30,003	3,756	8,416	617	716	16,498
Washington	9,972	1,229	1,458	211	1,388	5,685
Wayne	45,409	9,945	9,973	2146	6,519	16,827
Williams	44,958	13,111	20,346	5285	3,328	2,888
Wood	97,750	26,504	35,568	12346	2,233	21,099
Wyandot	44,683	13,583	23,296	6016	790	998
<b>State</b>	<b>3,043,370</b>	<b>764,733</b>	<b>1,106,855</b>	<b>194,715</b>	<b>136,840</b>	<b>840,227</b>

2/ Includes rye, barley, tobacco, oil crops, potatoes, fresh market, processing and greenhouse vegetables, fruits, nuts, and all other crops.

**TABLE IX**  
**CASH RECEIPTS FROM FARM MARKETINGS, BY COMMODITIES AND**  
**COMMODITY GROUPS, BY COUNTY, OHIO 2004 PRELIMINARY**

County	Cash Receipts From Livestock and Livestock Products				
	Total Livestock	Milk	Cattle & Calves	Hogs & Pigs	Poultry & Other Livestock 1/
	2004	2004	2004	2004	2004
	Thousand Dollars				
Adams	15,778	7,337	5,713	2,166	561
Allen	14,762	1,660	1,986	10,610	507
Ashland	37,605	22,377	6,890	5,360	2,978
Ashtabula	24,920	18,409	4,879	611	1,020
Athens	5,729	2,473	2,452	222	581
Auglaize	44,454	18,824	5,173	12,665	7,792
Belmont	10,593	4,681	5,370	83	459
Brown	6,909	1,892	3,997	528	492
Butler	11,336	4,266	3,800	2,416	853
Carroll	9,672	5,146	3,751	167	608
Champaign	12,799	4,349	2,893	4,999	558
Clark	10,471	2,606	4,536	2,777	552
Clermont	3,136	730	1,422	83	901
Clinton	8,306	1,710	1,398	4,777	422
Columbiana	34,207	23,887	6,448	1,583	2,288
Coshocton	32,480	7,404	5,664	8,915	10,498
Crawford	20,219	3,237	2,305	12,943	1,734
Cuyahoga	324	0	25	28	272
Darke	189,036	23,788	7,356	37,439	120,454
Defiance	12,937	7,835	2,305	2,583	214
Delaware	8,418	1,892	1,250	4,499	776
Erie	2,674	1,029	662	611	372
Fairfield	11,549	2,772	4,095	3,888	793
Fayette	5,555	448	1,201	3,388	517
Franklin	3,940	1,660	490	1,083	706
Fulton	25,743	6,889	4,340	14,220	294
Gallia	7,601	2,042	4,732	333	493
Geauga	9,740	6,242	1,814	222	1,462
Greene	7,769	1,029	1,839	3,999	902
Guernsey	9,085	2,175	4,977	972	961
Hamilton	1,869	531	515	56	767
Hancock	10,879	3,752	1,128	5,416	584
Hardin	55,740	8,898	2,427	14,998	29,417
Harrison	10,800	5,727	4,119	139	815
Henry	10,501	7,088	1,103	2,111	198
Highland	10,643	3,303	4,855	1,722	763
Hocking	1,656	266	785	222	384
Holmes	109,007	33,997	12,725	4,888	57,397
Huron	16,651	10,508	2,476	3,138	529
Jackson	3,550	465	2,771	28	287
Jefferson	5,812	2,988	2,280	194	349
Knox	27,001	16,285	5,492	3,166	2,058
Lake	732	266	172	56	239
Lawrence	2,579	382	1,643	139	416

**TABLE IX (Continued)**  
**CASH RECEIPTS FROM FARM MARKETINGS, BY COMMODITIES AND**  
**COMMODITY GROUPS, BY COUNTY, OHIO 2004 PRELIMINARY**

County	Cash Receipts From Crops					
	Total Crops	Corn	Soybeans	Wheat	Oats & Hay	Other Crops 2/
	2004	2004	2004	2004	2004	2004
Thousand Dollars						
Adams	14,624	2,343	3,522	413	1,485	6,861
Allen	49,749	19,896	20,899	4180	1,236	3,538
Ashland	28,410	9,145	8,419	1162	3,914	5,770
Ashtabula	20,100	2,824	4,171	583	2,071	10,451
Athens	3,077	246	342	173	714	1,602
Auglaize	60,252	20,963	26,806	4734	1,166	6,582
Belmont	8,906	85	27	13	1,247	7,533
Brown	30,005	4,515	17,095	412	785	7,198
Butler	27,559	8,433	10,228	1010	730	7,159
Carroll	60,598	1,369	1,647	189	1,219	56,174
Champaign	60,085	27,493	25,973	1252	933	4,434
Clark	75,992	20,916	20,722	765	781	32,808
Clermont	21,086	3,949	9,672	315	488	6,663
Clinton	58,999	22,171	31,532	1426	408	3,463
Columbiana	18,771	4,274	3,424	601	2,089	8,382
Coshocton	13,769	4,182	5,059	302	1,249	2,977
Crawford	62,539	24,620	27,524	5004	1,032	4,358
Cuyahoga	10,532	19	19	12	62	10,419
Darke	99,210	44,313	41,670	4411	1,266	7,549
Defiance	48,471	16,024	26,383	3284	1,513	1,267
Delaware	48,444	12,133	20,101	2479	735	12,996
Erie	35,337	9,694	9,032	1539	697	14,375
Fairfield	46,917	20,180	18,788	2505	1,401	4,044
Fayette	68,284	29,420	34,936	1796	755	1,377
Franklin	28,733	4,761	8,762	845	407	13,957
Fulton	78,059	29,851	23,894	4435	1,071	18,808
Gallia	4,376	357	369	61	934	2,655
Geauga	11,334	568	206	125	1,418	9,016
Greene	54,351	16,926	21,235	1066	582	14,541
Guernsey	7,725	315	406	12	1,249	5,744
Hamilton	13,771	1,270	1,262	158	130	10,951
Hancock	78,881	29,576	33,560	9414	1,608	4,722
Hardin	60,452	24,025	29,613	3750	629	2,436
Harrison	2,232	331	195	13	995	698
Henry	75,287	26,109	26,864	8242	2,035	12,038
Highland	36,493	6,965	20,812	1405	991	6,319
Hocking	2,397	263	384	52	287	1,412
Holmes	14,503	4,775	3,952	317	2,583	2,876
Huron	56,804	19,456	22,208	4063	1,288	9,788
Jackson	2,753	422	510	91	738	993
Jefferson	3,009	250	63	22	835	1,838
Knox	39,254	14,449	12,978	868	2,530	8,429
Lake	54,830	72	26	15	214	54,502
Lawrence	2,376	151	257	44	332	1,592

**TABLE IX (Continued)**  
**CASH RECEIPTS FROM FARM MARKETINGS, BY COMMODITIES AND**  
**COMMODITY GROUPS, BY COUNTY, OHIO 2004 PRELIMINARY**

County	Cash Receipts From Livestock and Livestock Products				
	Total Livestock	Milk	Cattle & Calves	Hogs & Pigs	Poultry & Other Livestock 1/
	2004	2004	2004	2004	2004
	Thousand Dollars				
Licking	68,827	6,872	5,173	6,444	50,338
Logan	19,737	10,939	3,114	4,888	796
Lorain	17,305	11,969	2,623	2,055	657
Lucas	3,250	249	245	2,500	257
Madison	20,772	11,819	2,231	6,249	473
Mahoning	17,734	12,666	2,942	694	1,431
Marion	20,122	11,172	1,250	7,166	534
Medina	15,254	10,441	3,114	528	1,171
Meigs	5,330	2,141	2,648	278	263
Mercer	275,775	60,905	12,063	51,548	151,258
Miami	10,741	4,416	1,986	3,555	784
Monroe	7,936	3,984	3,433	194	325
Montgomery	7,289	1,444	1,324	3,944	577
Morgan	8,654	3,403	3,727	1,111	413
Morrow	14,723	5,661	2,673	5,221	1,169
Muskingum	13,553	3,851	6,375	2,139	1,188
Noble	3,927	232	3,187	83	424
Ottawa	2,543	1,162	343	861	177
Paulding	27,979	12,616	1,324	2,694	11,345
Perry	4,874	1,527	2,771	167	409
Pickaway	15,760	5,843	2,574	6,888	454
Pike	4,601	1,892	2,035	361	313
Portage	10,053	5,993	2,011	389	1,661
Preble	20,068	3,436	4,144	11,721	767
Putnam	38,449	13,131	3,016	16,914	5,389
Richland	28,155	16,899	5,370	4,527	1,359
Ross	7,907	2,075	4,168	1,111	552
Sandusky	5,371	1,560	1,643	1,416	751
Scioto	8,372	1,162	2,722	83	4,405
Seneca	13,778	1,975	2,623	8,721	458
Shelby	46,294	22,360	5,345	15,970	2,619
Stark	56,696	29,083	6,081	1,611	19,922
Summit	1,429	498	294	139	498
Trumbull	14,375	9,180	3,776	389	1,031
Tuscarawas	55,315	32,304	7,846	2,027	13,138
Union	40,387	3,901	3,040	10,943	22,503
Van Wert	16,562	9,147	1,177	3,194	3,044
Vinton	1,186	249	662	139	136
Warren	4,218	515	1,618	805	1,280
Washington	13,999	7,022	5,271	1,111	595
Wayne	150,151	97,558	21,895	13,665	17,033
Williams	24,407	17,579	3,163	2,583	1,082
Wood	13,777	3,669	1,128	1,666	7,314
Wyandot	49,302	4,233	1,177	13,581	30,311
<b>State</b>	<b>2,072,104</b>	<b>751,980</b>	<b>301,578</b>	<b>402,719</b>	<b>615,827</b>

1/ Includes sheep, lamb, broilers, farm chickens, chicken eggs, turkeys, other poultry, honey, horses, mules, wool and other livestock.

**TABLE IX (Continued)**  
**CASH RECEIPTS FROM FARM MARKETINGS, BY COMMODITIES AND**  
**COMMODITY GROUPS, BY COUNTY, OHIO 2004 PRELIMINARY**

County	Cash Receipts From Crops					
	Total Crops	Corn	Soybeans	Wheat	Oats & Hay	Other Crops 2/
	2004	2004	2004	2004	2004	2004
	Thousand Dollars					
Licking	63,432	16,123	17,671	1098	2,331	26,209
Logan	46,995	18,813	22,493	2278	1,132	2,279
Lorain	77,033	3,934	8,645	1237	2,230	60,988
Lucas	52,998	8,642	6,937	1697	424	35,297
Madison	85,403	34,333	39,575	2115	644	8,737
Mahoning	13,902	2,033	2,633	403	1,171	7,661
Marion	49,644	16,226	28,386	3101	522	1,408
Medina	27,325	1,969	4,841	779	1,341	18,396
Meigs	16,278	265	300	23	650	15,040
Mercer	71,544	32,298	29,708	5414	2,094	2,029
Miami	56,028	24,792	23,408	1581	644	5,603
Monroe	1,473	120	35	19	850	450
Montgomery	45,015	9,935	13,502	667	422	20,490
Morgan	2,883	361	201	21	885	1,415
Morrow	36,134	11,051	19,156	2008	1,118	2,799
Muskingum	11,464	2,498	2,224	286	1,795	4,661
Noble	1,547	83	16	15	812	621
Ottawa	33,107	6,178	9,667	2948	901	13,413
Paulding	58,443	18,377	29,123	8008	1,014	1,922
Perry	12,269	2,699	2,525	453	577	6,016
Pickaway	79,028	31,275	34,663	4545	897	7,646
Pike	5,701	1,195	2,658	82	477	1,289
Portage	22,151	2,320	3,329	381	1,043	15,078
Preble	53,921	24,426	25,497	1350	663	1,986
Putnam	103,365	26,839	35,422	9934	3,793	27,377
Richland	31,793	9,055	9,854	1178	2,630	9,076
Ross	43,075	17,093	19,119	2755	1,661	2,447
Sandusky	67,898	21,647	19,688	4316	1,761	20,486
Scioto	6,702	1,124	2,772	113	633	2,061
Seneca	71,597	25,431	27,698	8569	1,129	8,771
Shelby	49,684	20,704	23,060	3404	1,137	1,379
Stark	30,684	5,010	5,764	953	2,496	16,461
Summit	8,263	322	344	28	333	7,237
Trumbull	21,533	3,351	5,096	722	1,166	11,198
Tuscarawas	16,364	3,023	3,201	253	1,480	8,407
Union	50,944	16,127	27,571	2997	882	3,366
Van Wert	72,043	26,992	34,940	4956	638	4,516
Vinton	832	170	185	26	354	97
Warren	34,793	6,422	10,185	944	579	16,663
Washington	8,883	1,293	1,231	147	1,036	5,175
Wayne	42,739	9,517	10,619	1514	4,259	16,829
Williams	46,012	15,964	21,240	3757	2,115	2,936
Wood	104,880	33,475	35,323	12439	1,842	21,800
Wyandot	52,141	20,504	24,242	5598	589	1,208
<b>State</b>	<b>3,387,276</b>	<b>1,024,109</b>	<b>1,220,297</b>	<b>178,672</b>	<b>103,981</b>	<b>860,217</b>

2/ Includes rye, barley, tobacco, oil crops, potatoes, fresh market, processing and greenhouse vegetables, fruits, nuts, and all other crops.

**TABLE X**  
**CASH RECEIPTS OF THE EIGHT MAJOR COMMODITIES BY RELATIVE IMPORTANCE, BY**  
**COUNTIES, OHIO 2004**

County	Eight Major Commodities							
	First		Second		Third		Fourth	
	Commodity	Percent	Commodity	Percent	Commodity	Percent	Commodity	Percent
Adams	Milk	24	Oth. Crops	23	Cattle	19	Soybeans	12
Allen	Soybeans	32	Corn	31	Hogs	16	Wheat	6
Ashland	Milk	34	Corn	14	Soybeans	13	Cattle	10
Ashtabula	Milk	41	Oth. Crops	23	Cattle	11	Soybeans	9
Athens	Milk	28	Cattle	28	Oth. Crops	18	Hay & Oats	8
Auglaize	Soybeans	26	Corn	20	Milk	18	Hogs	12
Belmont	Oth. Crops	39	Cattle	28	Milk	24	Hay & Oats	6
Brown	Soybeans	46	Oth. Crops	19	Corn	12	Cattle	11
Butler	Soybeans	26	Corn	22	Oth. Crops	18	Milk	11
Carroll	Oth. Crops	80	Milk	7	Cattle	5	Soybeans	2
Champaign	Corn	38	Soybeans	36	Hogs	7	Oth. Crops	6
Clark	Oth. Crops	38	Corn	24	Soybeans	24	Cattle	5
Clermont	Soybeans	40	Oth. Crops	28	Corn	16	Cattle	6
Clinton	Soybeans	47	Corn	33	Hogs	7	Oth. Crops	5
Columbiana	Milk	45	Oth. Crops	16	Cattle	12	Corn	8
Coshocton	Oth. Lvstk	23	Hogs	19	Milk	16	Cattle	12
Crawford	Soybeans	33	Corn	30	Hogs	16	Wheat	6
Cuyahoga	Oth. Crops	96	Oth. Lvstk	3	Hay & Oats	1	Hogs	0
Darke	Oth. Lvstk	42	Corn	15	Soybeans	14	Hogs	13
Defiance	Soybeans	43	Corn	26	Milk	13	Wheat	5
Delaware	Soybeans	35	Oth. Crops	23	Corn	21	Hogs	8
Erie	Oth. Crops	38	Corn	26	Soybeans	24	Wheat	4
Fairfield	Corn	35	Soybeans	32	Cattle	7	Oth. Crops	7
Fayette	Soybeans	47	Corn	40	Hogs	5	Wheat	2
Franklin	Oth. Crops	43	Soybeans	27	Corn	15	Milk	5
Fulton	Corn	29	Soybeans	23	Oth. Crops	18	Hogs	14
Gallia	Cattle	40	Oth. Crops	22	Milk	17	Hay & Oats	8
Geauga	Oth. Crops	43	Milk	30	Cattle	9	Oth. Lvstk	7
Greene	Soybeans	34	Corn	27	Oth. Crops	23	Hogs	6
Guernsey	Oth. Crops	34	Cattle	30	Milk	13	Hay & Oats	7
Hamilton	Oth. Crops	70	Corn	8	Soybeans	8	Oth. Lvstk	5
Hancock	Soybeans	37	Corn	33	Wheat	10	Hogs	6
Hardin	Soybeans	25	Oth. Lvstk	25	Corn	21	Hogs	13
Harrison	Milk	44	Cattle	32	Hay & Oats	8	Oth. Lvstk	6
Henry	Soybeans	31	Corn	30	Oth. Crops	14	Wheat	10
Highland	Soybeans	44	Corn	15	Oth. Crops	13	Cattle	10
Hocking	Oth. Crops	35	Cattle	19	Oth. Lvstk	9	Soybeans	9
Holmes	Oth. Lvstk	46	Milk	28	Cattle	10	Hogs	4
Huron	Soybeans	30	Corn	26	Milk	14	Oth. Crops	13
Jackson	Cattle	44	Oth. Crops	16	Hay & Oats	12	Soybeans	8
Jefferson	Milk	34	Cattle	26	Oth. Crops	21	Hay & Oats	9
Knox	Milk	25	Corn	22	Soybeans	20	Oth. Crops	13
Lake	Oth. Crops	98	Milk	0	Oth. Lvstk	0	Hay & Oats	0
Lawrence	Cattle	33	Oth. Crops	32	Oth. Lvstk	8	Milk	8

**TABLE X (Continued)**  
**CASH RECEIPTS OF THE EIGHT MAJOR COMMODITIES BY**  
**RELATIVE IMPORTANCE COUNTIES, OHIO 2004**

County	Eight Major Commodities							
	Fifth		Sixth		Seventh		Eighth	
	Commodity	Percent	Commodity	Percent	Commodity	Percent	Commodity	Percent
Adams	Corn	8	Hogs	7	Hay & Oats	5	Oth. Lvstk	2
Allen	Oth. Crops	5	Cattle	3	Milk	3	Hay & Oats	2
Ashland	Oth. Crops	9	Hogs	8	Hay & Oats	6	Oth. Lvstk	5
Ashtabula	Corn	6	Hay & Oats	5	Oth. Lvstk	2	Hogs	1
Athens	Oth. Lvstk	7	Soybeans	4	Corn	3	Hogs	3
Auglaize	Oth. Lvstk	7	Oth. Crops	6	Cattle	5	Wheat	5
Belmont	Oth. Lvstk	2	Corn	0	Hogs	0	Soybeans	0
Brown	Milk	5	Hay & Oats	2	Hogs	1	Oth. Lvstk	1
Butler	Cattle	10	Hogs	6	Wheat	3	Oth. Lvstk	2
Carroll	Corn	2	Hay & Oats	2	Oth. Lvstk	1	Wheat	0
Champaign	Milk	6	Cattle	4	Wheat	2	Hay & Oats	1
Clark	Hogs	3	Milk	3	Hay & Oats	1	Wheat	1
Clermont	Oth. Lvstk	4	Milk	3	Hay & Oats	2	Wheat	1
Clinton	Milk	3	Wheat	2	Cattle	2	Oth. Lvstk	1
Columbiana	Soybeans	6	Oth. Lvstk	4	Hay & Oats	4	Hogs	3
Coshocton	Soybeans	11	Corn	9	Oth. Crops	6	Hay & Oats	3
Crawford	Oth. Crops	5	Milk	4	Cattle	3	Oth. Lvstk	2
Cuyahoga	Cattle	0	Corn	0	Soybeans	0	Wheat	0
Darke	Milk	8	Oth. Crops	3	Cattle	3	Wheat	2
Defiance	Hogs	4	Cattle	4	Hay & Oats	2	Oth. Crops	2
Delaware	Wheat	4	Milk	3	Cattle	2	Oth. Lvstk	1
Erie	Milk	3	Hay & Oats	2	Cattle	2	Hogs	2
Fairfield	Hogs	7	Milk	5	Wheat	4	Hay & Oats	2
Fayette	Oth. Crops	2	Cattle	2	Hay & Oats	1	Oth. Lvstk	1
Franklin	Hogs	3	Wheat	3	Oth. Lvstk	2	Cattle	1
Fulton	Milk	7	Wheat	4	Cattle	4	Hay & Oats	1
Gallia	Oth. Lvstk	4	Soybeans	3	Corn	3	Hogs	3
Geauga	Hay & Oats	7	Corn	3	Hogs	1	Soybeans	1
Greene	Cattle	3	Wheat	2	Milk	2	Oth. Lvstk	1
Guernsey	Hogs	6	Oth. Lvstk	6	Soybeans	2	Corn	2
Hamilton	Milk	3	Cattle	3	Wheat	1	Hay & Oats	1
Hancock	Oth. Crops	5	Milk	4	Hay & Oats	2	Cattle	1
Hardin	Milk	8	Wheat	3	Oth. Crops	2	Cattle	2
Harrison	Oth. Crops	5	Corn	3	Soybeans	1	Hogs	1
Henry	Milk	8	Hogs	2	Hay & Oats	2	Cattle	1
Highland	Milk	7	Hogs	4	Wheat	3	Hay & Oats	2
Hocking	Hay & Oats	7	Milk	7	Corn	6	Hogs	5
Holmes	Corn	4	Soybeans	3	Oth. Crops	2	Hay & Oats	2
Huron	Wheat	6	Hogs	4	Cattle	3	Hay & Oats	2
Jackson	Milk	7	Corn	7	Oth. Lvstk	5	Wheat	1
Jefferson	Oth. Lvstk	4	Corn	3	Hogs	2	Soybeans	1
Knox	Cattle	8	Hogs	5	Hay & Oats	4	Oth. Lvstk	3
Lake	Cattle	0	Corn	0	Hogs	0	Soybeans	0
Lawrence	Hay & Oats	7	Soybeans	5	Corn	3	Hogs	3

**TABLE X (Continued)**

**CASH RECEIPTS OF THE EIGHT MAJOR COMMODITIES BY RELATIVE IMPORTANCE, BY COUNTIES, OHIO 2004**

County	Eight Major Commodities							
	First		Second		Third		Fourth	
	Commodity	Percent	Commodity	Percent	Commodity	Percent	Commodity	Percent
Licking	Oth. Lvstk	38	Oth. Crops	20	Soybeans	13	Corn	12
Logan	Soybeans	34	Corn	28	Milk	16	Hogs	7
Lorain	Oth. Crops	65	Milk	13	Soybeans	9	Corn	4
Lucas	Oth. Crops	63	Corn	15	Soybeans	12	Hogs	4
Madison	Soybeans	37	Corn	32	Milk	11	Oth. Crops	8
Mahoning	Milk	40	Oth. Crops	24	Cattle	9	Soybeans	8
Marion	Soybeans	41	Corn	23	Milk	16	Hogs	10
Medina	Oth. Crops	43	Milk	25	Soybeans	11	Cattle	7
Meigs	Oth. Crops	70	Cattle	12	Milk	10	Hay & Oats	3
Mercer	Oth. Lvstk	44	Milk	18	Hogs	15	Corn	9
Miami	Corn	37	Soybeans	35	Oth. Crops	8	Milk	7
Monroe	Milk	42	Cattle	36	Hay & Oats	9	Oth. Crops	5
Montgomery	Oth. Crops	39	Soybeans	26	Corn	19	Hogs	8
Morgan	Cattle	32	Milk	29	Oth. Crops	12	Hogs	10
Morrow	Soybeans	38	Corn	22	Milk	11	Hogs	10
Muskingum	Cattle	25	Oth. Crops	19	Milk	15	Corn	10
Noble	Cattle	58	Hay & Oats	15	Oth. Crops	11	Oth. Lvstk	8
Ottawa	Oth. Crops	38	Soybeans	27	Corn	17	Wheat	8
Paulding	Soybeans	34	Corn	21	Milk	15	Oth. Lvstk	13
Perry	Oth. Crops	35	Cattle	16	Corn	16	Soybeans	15
Pickaway	Soybeans	37	Corn	33	Oth. Crops	8	Hogs	7
Pike	Soybeans	26	Cattle	20	Milk	18	Oth. Crops	13
Portage	Oth. Crops	47	Milk	19	Soybeans	10	Corn	7
Preble	Soybeans	34	Corn	33	Hogs	16	Cattle	6
Putnam	Soybeans	25	Oth. Crops	19	Corn	19	Hogs	12
Richland	Milk	28	Soybeans	16	Oth. Crops	15	Corn	15
Ross	Soybeans	38	Corn	34	Cattle	8	Wheat	5
Sandusky	Corn	30	Oth. Crops	28	Soybeans	27	Wheat	6
Scioto	Oth. Lvstk	29	Soybeans	18	Cattle	18	Oth. Crops	14
Seneca	Soybeans	32	Corn	30	Oth. Crops	10	Hogs	10
Shelby	Soybeans	24	Milk	23	Corn	22	Hogs	17
Stark	Milk	33	Oth. Lvstk	23	Oth. Crops	19	Cattle	7
Summit	Oth. Crops	75	Milk	5	Oth. Lvstk	5	Soybeans	4
Trumbull	Oth. Crops	31	Milk	26	Soybeans	14	Cattle	11
Tuscarawas	Milk	45	Oth. Lvstk	18	Oth. Crops	12	Cattle	11
Union	Soybeans	30	Oth. Lvstk	25	Corn	18	Hogs	12
Van Wert	Soybeans	39	Corn	30	Milk	10	Wheat	6
Vinton	Cattle	33	Hay & Oats	18	Milk	12	Soybeans	9
Warren	Oth. Crops	43	Soybeans	26	Corn	16	Cattle	4
Washington	Milk	31	Cattle	23	Oth. Crops	23	Corn	6
Wayne	Milk	51	Cattle	11	Oth. Lvstk	9	Oth. Crops	9
Williams	Soybeans	30	Milk	25	Corn	23	Wheat	5
Wood	Soybeans	30	Corn	28	Oth. Crops	18	Wheat	10
Wyandot	Oth. Lvstk	30	Soybeans	24	Corn	20	Hogs	13
<b>State</b>	Soybeans	22	Corn	19	Oth. Crops	16	Milk	14

**TABLE X (Continued)**  
**CASH RECEIPTS OF THE EIGHT MAJOR COMMODITIES BY**  
**RELATIVE IMPORTANCE COUNTIES, OHIO 2004**

County	Eight Major Commodities							
	Fifth		Sixth		Seventh		Eighth	
	Commodity	Percent	Commodity	Percent	Commodity	Percent	Commodity	Percent
Licking	Milk	5	Hogs	5	Cattle	4	Hay & Oats	2
Logan	Cattle	5	Oth. Crops	3	Wheat	3	Hay & Oats	2
Lorain	Cattle	3	Hay & Oats	2	Hogs	2	Wheat	1
Lucas	Wheat	3	Hay & Oats	1	Oth. Lvstk	0	Milk	0
Madison	Hogs	6	Cattle	2	Wheat	2	Hay & Oats	1
Mahoning	Corn	6	Oth. Lvstk	5	Hay & Oats	4	Hogs	2
Marion	Wheat	4	Oth. Crops	2	Cattle	2	Oth. Lvstk	1
Medina	Corn	5	Hay & Oats	3	Oth. Lvstk	3	Wheat	2
Meigs	Soybeans	1	Hogs	1	Corn	1	Oth. Lvstk	1
Mercer	Soybeans	9	Cattle	3	Wheat	2	Hay & Oats	1
Miami	Hogs	5	Cattle	3	Wheat	2	Oth. Lvstk	1
Monroe	Oth. Lvstk	3	Hogs	2	Corn	1	Soybeans	0
Montgomery	Milk	3	Cattle	3	Wheat	1	Oth. Lvstk	1
Morgan	Hay & Oats	8	Oth. Lvstk	4	Corn	3	Soybeans	2
Morrow	Oth. Crops	6	Cattle	5	Wheat	4	Oth. Lvstk	2
Muskingum	Soybeans	9	Hogs	9	Hay & Oats	7	Oth. Lvstk	5
Noble	Milk	4	Hogs	2	Corn	2	Soybeans	0
Ottawa	Milk	3	Hay & Oats	3	Hogs	2	Cattle	1
Paulding	Wheat	9	Hogs	3	Oth. Crops	2	Cattle	2
Perry	Milk	9	Hay & Oats	3	Wheat	3	Oth. Lvstk	2
Pickaway	Milk	6	Wheat	5	Cattle	3	Hay & Oats	1
Pike	Corn	12	Hay & Oats	5	Hogs	4	Oth. Lvstk	3
Portage	Cattle	6	Oth. Lvstk	5	Hay & Oats	3	Hogs	1
Preble	Milk	5	Oth. Crops	3	Wheat	2	Oth. Lvstk	1
Putnam	Milk	9	Wheat	7	Oth. Lvstk	4	Hay & Oats	3
Richland	Cattle	9	Hogs	8	Hay & Oats	4	Oth. Lvstk	2
Ross	Oth. Crops	5	Milk	4	Hay & Oats	3	Hogs	2
Sandusky	Hay & Oats	2	Cattle	2	Milk	2	Hogs	2
Scioto	Milk	8	Corn	7	Hay & Oats	4	Wheat	1
Seneca	Wheat	10	Cattle	3	Milk	2	Hay & Oats	1
Shelby	Cattle	6	Wheat	4	Oth. Lvstk	3	Oth. Crops	1
Stark	Soybeans	7	Corn	6	Hay & Oats	3	Hogs	2
Summit	Hay & Oats	3	Corn	3	Cattle	3	Hogs	1
Trumbull	Corn	9	Hay & Oats	3	Oth. Lvstk	3	Wheat	2
Tuscarawas	Soybeans	4	Corn	4	Hogs	3	Hay & Oats	2
Union	Milk	4	Oth. Crops	4	Cattle	3	Wheat	3
Van Wert	Oth. Crops	5	Hogs	4	Oth. Lvstk	3	Cattle	1
Vinton	Corn	8	Hogs	7	Oth. Lvstk	7	Oth. Crops	5
Warren	Oth. Lvstk	3	Wheat	2	Hogs	2	Hay & Oats	1
Washington	Soybeans	5	Hogs	5	Hay & Oats	5	Oth. Lvstk	3
Wayne	Hogs	7	Soybeans	6	Corn	5	Hay & Oats	2
Williams	Cattle	4	Oth. Crops	4	Hogs	4	Hay & Oats	3
Wood	Oth. Lvstk	6	Milk	3	Hay & Oats	2	Hogs	1
Wyandot	Wheat	6	Milk	4	Oth. Crops	1	Cattle	1
<b>State</b>	Oth. Lvstk	11	Hogs	7	Cattle	6	Wheat	3

**TABLE XI**  
**THE COUNTY RANKINGS BY TOTAL CASH RECEIPTS AND MAJOR AGRICULTURAL**  
**COMMODITIES, OHIO, 2004**

Rank	Total Receipts	Milk	Cattle & Calves	Hogs & Pigs	Poultry & Other Livestock 1/
1	Mercer	Wayne	Wayne	Mercer	Mercer
2	Darke	Mercer	Holmes	Darke	Darke
3	Wayne	Holmes	Mercer	Putnam	Holmes
4	Putnam	Tuscarawas	Tuscarawas	Shelby	Licking
5	Licking	Stark	Darke	Hardin	Wyandot
6	Holmes	Columbiana	Ashland	Fulton	Hardin
7	Wood	Darke	Columbiana	Wayne	Union
8	Hardin	Ashland	Muskingum	Wyandot	Stark
9	Madison	Shelby	Stark	Crawford	Wayne
10	Auglaize	Auglaize	Adams	Auglaize	Tuscarawas
11	Fulton	Ashtabula	Coshocton	Preble	Paulding
12	Wyandot	Williams	Knox	Union	Coshocton
13	Shelby	Richland	Belmont	Allen	Auglaize
14	Pickaway	Knox	Richland	Coshocton	Wood
15	Lorain	Putnam	Shelby	Seneca	Putnam
16	Union	Mahoning	Washington	Marion	Scioto
17	Hancock	Paulding	Licking	Pickaway	Van Wert
18	Van Wert	Lorain	Auglaize	Licking	Ashland
19	Stark	Madison	Guernsey	Madison	Shelby
20	Clark	Marion	Ashtabula	Hancock	Columbiana
21	Paulding	Logan	Highland	Ashland	Knox
22	Henry	Huron	Gallia	Morrow	Crawford
23	Seneca	Medina	Clark	Champaign	Portage
24	Crawford	Trumbull	Fulton	Holmes	Geauga
25	Preble	Van Wert	Ross	Logan	Mahoning
26	Franklin	Hardin	Preble	Clinton	Richland
27	Huron	Defiance	Harrison	Richland	Warren
28	Sandusky	Coshocton	Fairfield	Delaware	Muskingum
29	Champaign	Adams	Brown	Greene	Medina
30	Tuscarawas	Henry	Butler	Montgomery	Morrow
31	Williams	Washington	Trumbull	Fairfield	Williams
32	Carroll	Fulton	Carroll	Miami	Trumbull
33	Marion	Licking	Morgan	Franklin	Ashtabula
34	Clinton	Geauga	Monroe	Van Wert	Guernsey
35	Miami	Portage	Noble	Knox	Greene
36	Logan	Pickaway	Williams	Huron	Clermont
37	Knox	Harrison	Medina	Clark	Butler
38	Ashland	Morrow	Logan	Paulding	Harrison
39	Allen	Carroll	Union	Defiance	Logan
40	Greene	Belmont	Putnam	Williams	Fairfield
41	Defiance	Miami	Mahoning	Lucas	Miami
42	Richland	Champaign	Champaign	Butler	Delaware
43	Fairfield	Butler	Perry	Adams	Hamilton
44	Delaware	Wyandot	Jackson	Muskingum	Preble

**TABLE XI (Continued)**

**THE COUNTY RANKINGS BY TOTAL CASH RECEIPTS AND MAJOR AGRICULTURAL  
COMMODITIES, OHIO, 2004**

Rank	Corn	Soybeans	Wheat	Oats & Hay	Other Crops 2/
1	Darke	Darke	Wood	Wayne	Lorain
2	Madison	Madison	Putnam	Ashland	Carroll
3	Wood	Putnam	Hancock	Putnam	Lake
4	Mercer	Wood	Seneca	Richland	Lucas
5	Pickaway	Van Wert	Henry	Holmes	Clark
6	Fulton	Franklin	Paulding	Knox	Putnam
7	Hancock	Pickaway	Wyandot	Stark	Licking
8	Franklin	Hancock	Mercer	Licking	Wood
9	Champaign	Clinton	Crawford	Lorain	Montgomery
10	Van Wert	Mercer	Van Wert	Williams	Sandusky
11	Putnam	Hardin	Auglaize	Mercer	Fulton
12	Henry	Paulding	Pickaway	Columbiana	Medina
13	Seneca	Marion	Fulton	Ashtabula	Wayne
14	Miami	Seneca	Darke	Henry	Warren
15	Crawford	Union	Sandusky	Wood	Stark
16	Preble	Crawford	Allen	Muskingum	Portage
17	Hardin	Henry	Huron	Sandusky	Meigs
18	Clinton	Auglaize	Williams	Ross	Greene
19	Sandusky	Defiance	Hardin	Hancock	Erie
20	Auglaize	Champaign	Shelby	Defiance	Fayette
21	Clark	Preble	Defiance	Adams	Ottawa
22	Shelby	Wyandot	Marion	Tuscarawas	Delaware
23	Wyandot	Fulton	Union	Geauga	Henry
24	Fairfield	Miami	Ottawa	Fairfield	Trumbull
25	Allen	Shelby	Ross	Medina	Hamilton
26	Huron	Logan	Fairfield	Huron	Ashtabula
27	Logan	Huron	Delaware	Darke	Cuyahoga
28	Paulding	Williams	Logan	Coshocton	Huron
29	Ross	Greene	Madison	Guernsey	Richland
30	Greene	Allen	Morrow	Belmont	Geauga
31	Marion	Highland	Franklin	Allen	Seneca
32	Union	Clark	Lucas	Carroll	Madison
33	Licking	Delaware	Miami	Mahoning	Knox
34	Defiance	Sandusky	Erie	Trumbull	Tuscarawas
35	Williams	Morrow	Wayne	Auglaize	Columbiana
36	Knox	Ross	Clinton	Shelby	Mahoning
37	Delaware	Fairfield	Highland	Logan	Pickaway
38	Morrow	Licking	Preble	Seneca	Darke
39	Montgomery	Brown	Champaign	Morrow	Belmont
40	Erie	Montgomery	Lorain	Fulton	Summit
41	Wayne	Knox	Richland	Portage	Brown
42	Ashland	Wayne	Ashland	Washington	Butler
43	Richland	Butler	Licking	Crawford	Adams
44	Lucas	Warren	Greene	Paulding	Clermont

**TABLE XI (Continued)**

**THE COUNTY RANKINGS BY TOTAL CASH RECEIPTS AND MAJOR AGRICULTURAL  
COMMODITIES, OHIO, 2004**

Rank	Total Receipts	Milk	Cattle & Calves	Hogs & Pigs	Poultry & Other Livestock 1/
45	Lucas	Monroe	Scioto	Henry	Highland
46	Lake	Union	Morrow	Lorain	Sandusky
47	Columbiana	Muskingum	Meigs	Tuscarawas	Fayette
48	Montgomery	Hancock	Lorain	Highland	Lorain
49	Ross	Wood	Seneca	Wood	Carroll
50	Morrow	Preble	Pickaway	Stark	Washington
51	Highland	Morgan	Huron	Columbiana	Hancock
52	Coshocton	Highland	Athens	Sandusky	Athens
53	Ashtabula	Crawford	Hardin	Morgan	Montgomery
54	Medina	Jefferson	Crawford	Washington	Adams
55	Warren	Fairfield	Defiance	Ross	Champaign
56	Butler	Clark	Jefferson	Fayette	Ross
57	Erie	Athens	Madison	Guernsey	Clark
58	Brown	Guernsey	Pike	Ottawa	Marion
59	Trumbull	Meigs	Portage	Warren	Huron
60	Ottawa	Ross	Allen	Mahoning	Franklin
61	Fayette	Gallia	Miami	Ashtabula	Allen
62	Portage	Seneca	Greene	Erie	Summit
63	Mahoning	Delaware	Geauga	Medina	Gallia
64	Adams	Brown	Sandusky	Brown	Brown
65	Muskingum	Pike	Lawrence	Portage	Madison
66	Clermont	Clinton	Warren	Trumbull	Belmont
67	Washington	Fayette	Clermont	Pike	Seneca
68	Meigs	Allen	Clinton	Gallia	Pickaway
69	Geauga	Sandusky	Montgomery	Meigs	Noble
70	Belmont	Perry	Paulding	Geauga	Clinton
71	Perry	Montgomery	Delaware	Athens	Lawrence
72	Guernsey	Scioto	Marion	Hocking	Morgan
73	Hamilton	Ottawa	Franklin	Jefferson	Perry
74	Scioto	Erie	Wyandot	Monroe	Hocking
75	Harrison	Greene	Van Wert	Carroll	Erie
76	Gallia	Clermont	Hancock	Perry	Jefferson
77	Morgan	Hamilton	Wood	Harrison	Monroe
78	Cuyahoga	Warren	Henry	Summit	Pike
79	Pike	Summit	Hocking	Lawrence	Fulton
80	Summit	Jackson	Erie	Vinton	Jackson
81	Monroe	Franklin	Vinton	Belmont	Cuyahoga
82	Jefferson	Lawrence	Hamilton	Noble	Meigs
83	Athens	Lake	Fayette	Clermont	Lucas
84	Jackson	Hocking	Ottawa	Scioto	Lake
85	Noble	Vinton	Summit	Lake	Defiance
86	Lawrence	Lucas	Lucas	Hamilton	Henry
87	Hocking	Noble	Lake	Cuyahoga	Ottawa
88	Vinton	Cuyahoga	Cuyahoga	Jackson	Vinton

1/ Includes sheep, lamb, broilers, farm chickens, chicken eggs, turkeys, other poultry, honey, horses, mules, wool and other livestock. 2/ Includes rye, barley, tobacco, oil crops, potatoes, fresh market, processing and greenhouse vegetables, fruits, nuts, and all other crops.

**TABLE XI (Continued)**

**THE COUNTY RANKINGS BY TOTAL CASH RECEIPTS AND MAJOR AGRICULTURAL  
COMMODITIES, OHIO, 2004**

Rank	Corn	Soybeans	Wheat	Oats & Hay	Other Crops 2/
45	Butler	Richland	Butler	Harrison	Auglaize
46	Highland	Clermont	Stark	Highland	Highland
47	Warren	Ottawa	Warren	Gallia	Perry
48	Ottawa	Erie	Knox	Champaign	Ashland
49	Stark	Fayette	Fayette	Ottawa	Guernsey
50	Holmes	Lorain	Medina	Pickaway	Miami
51	Fayette	Ashland	Clark	Morgan	Washington
52	Brown	Lucas	Trumbull	Union	Hancock
53	Columbiana	Stark	Montgomery	Monroe	Muskingum
54	Coshocton	Trumbull	Columbiana	Jefferson	Van Wert
55	Clermont	Coshocton	Ashtabula	Noble	Champaign
56	Lorain	Medina	Perry	Brown	Crawford
57	Trumbull	Ashtabula	Adams	Clark	Fairfield
58	Tuscarawas	Holmes	Brown	Franklin	Allen
59	Ashtabula	Adams	Mahoning	Jackson	Clinton
60	Perry	Columbiana	Portage	Delaware	Union
61	Muskingum	Portage	Holmes	Butler	Coshocton
62	Adams	Tuscarawas	Clermont	Athens	Williams
63	Portage	Scioto	Coshocton	Erie	Holmes
64	Mahoning	Pike	Muskingum	Preble	Morrow
65	Medina	Mahoning	Tuscarawas	Meigs	Gallia
66	Carroll	Perry	Carroll	Madison	Ross
67	Washington	Muskingum	Athens	Miami	Hardin
68	Hamilton	Carroll	Hamilton	Van Wert	Logan
69	Pike	Hamilton	Washington	Scioto	Scioto
70	Scioto	Washington	Geauga	Hardin	Mercer
71	Geauga	Jackson	Scioto	Wyandot	Preble
72	Jackson	Guernsey	Jackson	Greene	Paulding
73	Morgan	Hocking	Pike	Warren	Jefferson
74	Gallia	Gallia	Gallia	Perry	Athens
75	Harrison	Summit	Hocking	Marion	Lawrence
76	Summit	Athens	Lawrence	Clermont	Morgan
77	Guernsey	Meigs	Summit	Pike	Hocking
78	Meigs	Lawrence	Vinton	Lucas	Marion
79	Hocking	Geauga	Meigs	Montgomery	Shelby
80	Jefferson	Morgan	Jefferson	Clinton	Franklin
81	Athens	Harrison	Morgan	Fayette	Pike
82	Vinton	Vinton	Monroe	Vinton	Defiance
83	Lawrence	Jefferson	Noble	Summit	Wyandot
84	Monroe	Monroe	Lake	Lawrence	Jackson
85	Belmont	Belmont	Belmont	Hocking	Harrison
86	Noble	Lake	Harrison	Lake	Noble
87	Lake	Cuyahoga	Guernsey	Hamilton	Monroe
88	Cuyahoga	Noble	Cuyahoga	Cuyahoga	Vinton

1/ Includes sheep, lamb, broilers, farm chickens, chicken eggs, turkeys, other poultry, honey, horses, mules, wool and other livestock. 2/ Includes rye, barley, tobacco, oil crops, potatoes, fresh market, processing and greenhouse vegetables, fruits, nuts, and all other crops.

## PROCEDURE

Estimates of cash receipts from Ohio farm marketings were published initially in 1927 and annually since 1929. These county estimates of cash receipts for 2004 are published by the Department of Agricultural, Environmental and Development Economics of the Ohio State University's College of Food, Agricultural, and Environmental Sciences and the Ohio Agricultural Research and Development Center in cooperation with the National Agricultural Statistics Service of the United States Department of Agriculture. This bulletin contains preliminary 2004 Ohio county and state cash receipts estimates, and revised 1998-2003 state estimates. Also included are revised 2003 county and state cash receipts estimates to reflect the changes in county data from the preliminary estimates published in 2003. County production and inventory estimates of various commodities are published annually in the Ohio Field Office bulletin. For the 2004 edition, the format was revised to list counties in alphabetical order rather than by extension districts.

Current cash receipts from farm marketings of farm products represent calendar year gross receipts from commercial market sales as well as loans (net of redemptions) made or guaranteed by CCC and purchases under price support programs. The value of home consumption and production expenses is excluded. County estimates of cash receipts from farm marketings are derived by allocating state estimates to counties on the basis of crop and livestock production and Census marketings. Check data such as county dairy production from the milk market administrators are also used.

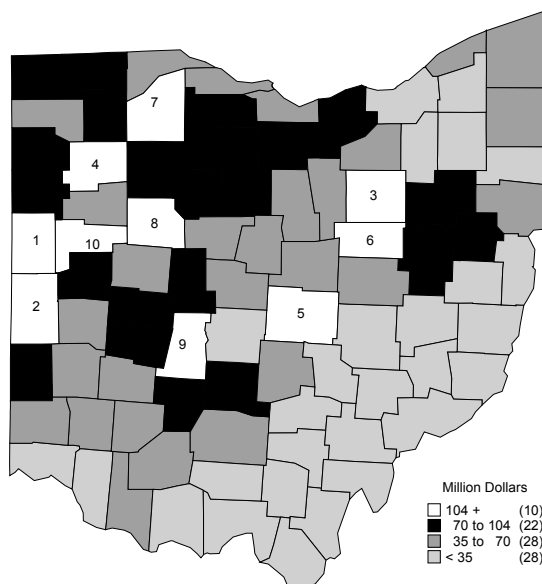
The definition of a farm includes a place which has annual sales of agricultural products of \$1,000 or more. This definition has been used since the 1974 Census of Agriculture. The average cash receipts per farm will aid in the comparison of counties with similar farm practices better than a comparison of total cash receipts.

This bulletin has been prepared through the efforts of many people, including personnel of agricultural agencies throughout Ohio. The greatest recognition is due to the large number of Ohio farmers and agri-businessmen for their interest and help in providing the basic data used in compiling this information.

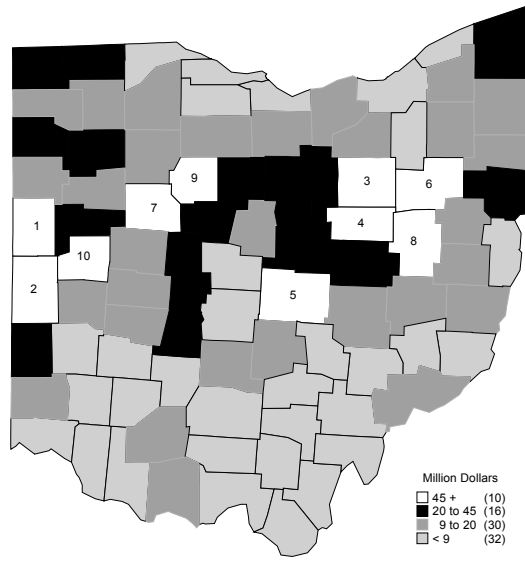
**FIGURE III**



**2003 Total Cash Receipts**



## 2004 Livestock Cash Receipts



## 2004 Crop Cash Receipts

