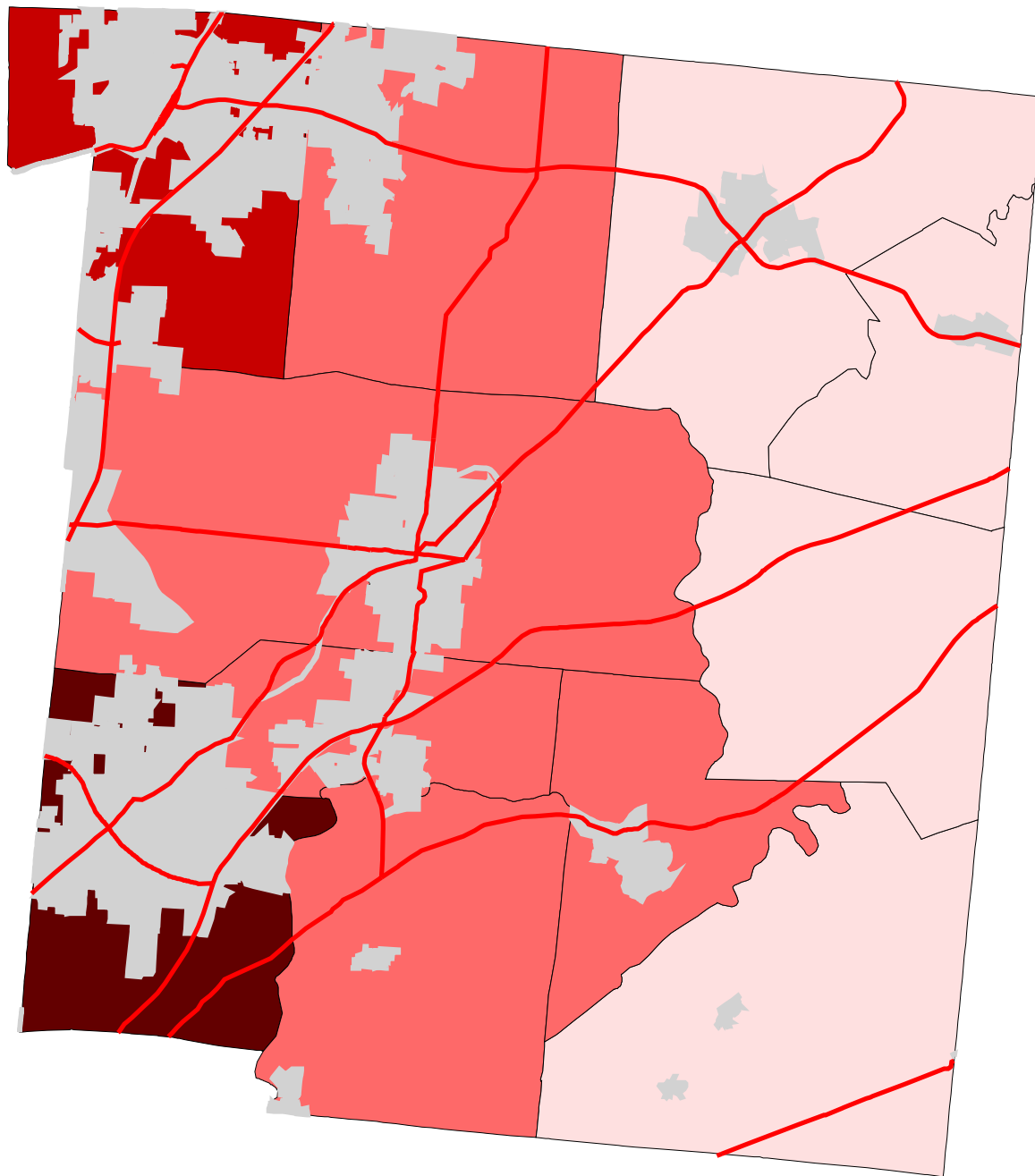






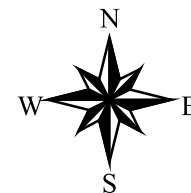
Map 7:
Warren County
% Land In Urban
(Early 1990's)



-  Townships
-  Cities & Villages
-  Highways

% of Land in
Urban

-  0.4 - 2
-  2 - 5.5
-  5.5 - 19
-  19 - 31.7



Prepared by:
Jason W. Reece
Dept. of AEDE
The Ohio State University
12.01.01