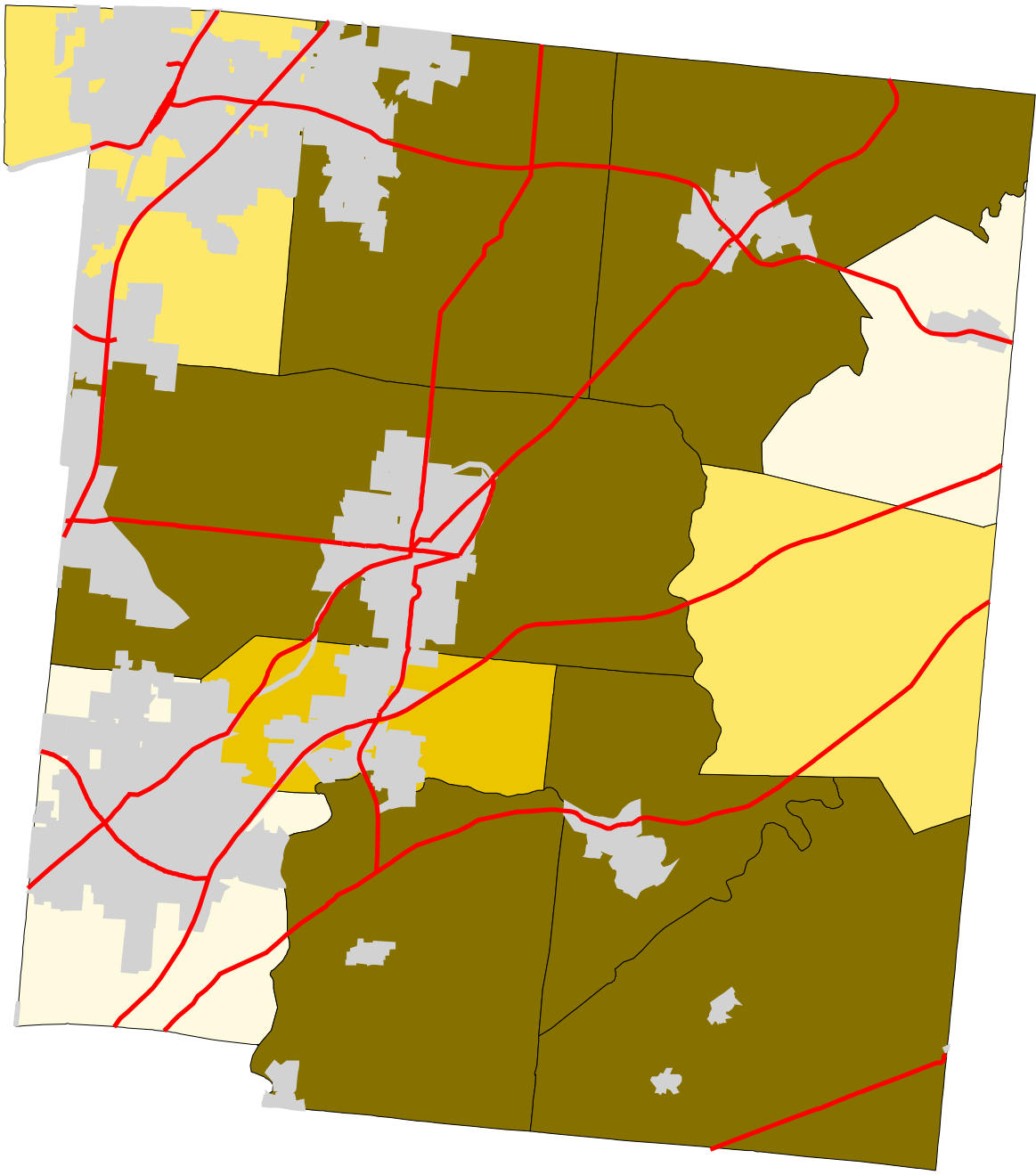









# Map 4: Warren County % Land In Pasture (Early 1990's)



- Legend:
-  Townships
  -  Cities & Villages
  -  Highways

% of Land in Pasture

	23 - 24
	24 - 27
	27 - 29
	29 - 40



Prepared by:  
Jason W. Reece  
Dept. of AEDE  
The Ohio State University  
12.01.01

Source: Multi-Resolution Land Characteristics Consortium National Land Cover Data Program  
Projection: State Plane 1927, Ohio North