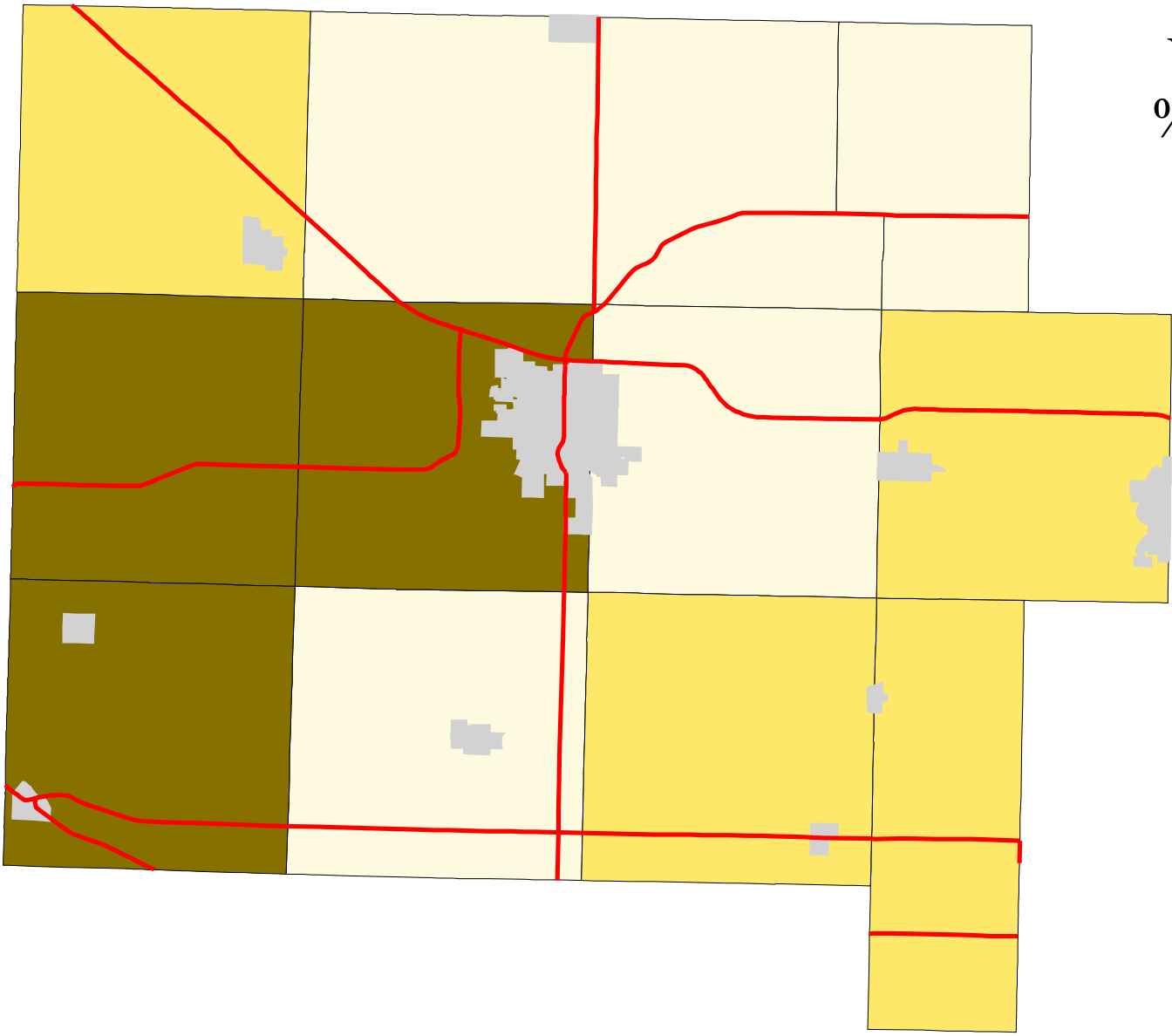


Map 4: Van Wert County % Land In Pasture (Early 1990's)



- Legend:
- Townships
 - Cities & Villages
 - ↘ Highways

- % of Land in Pasture
- 5 - 6
 - 6 - 7
 - 7 - 7
 - 7 - 11



Prepared by:
Jason W. Reece
Dept. of AEDE
The Ohio State University
12.01.01

Source: Multi-Resolution Land Characteristics Consortium National Land Cover Data Program
Projection: State Plane 1927, Ohio North