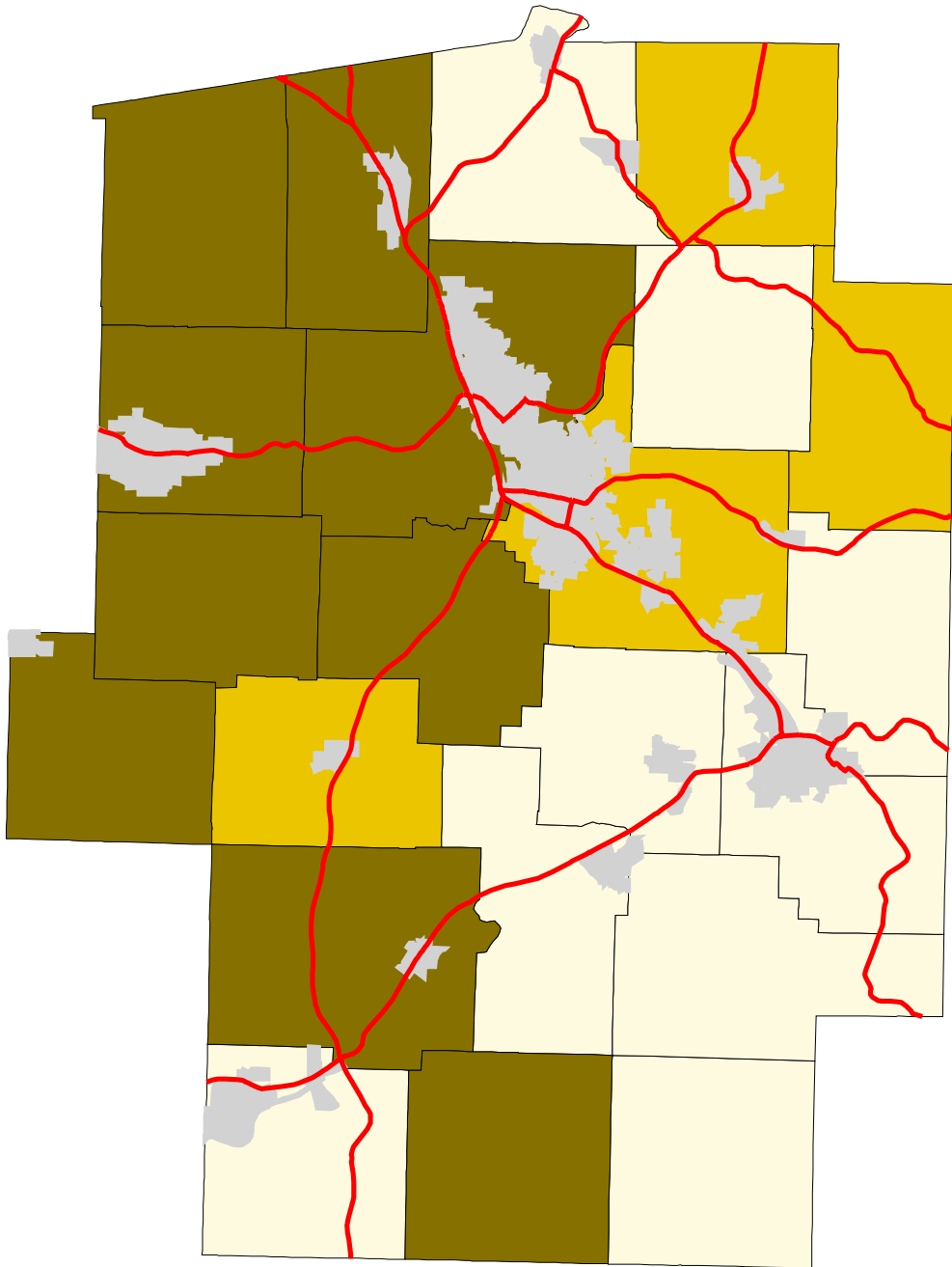









Map 4: Tuscarawas County % Land In Pasture (Early 1990's)



- Legend:
-  Townships
 -  Cities & Villages
 -  Highways

% of Land in Pasture

	17 - 21
	21 - 21
	21 - 24
	24 - 58



Prepared by:
Jason W. Reece
Dept. of AEDE
The Ohio State University
12.01.01

Source: Multi-Resolution Land Characteristics Consortium National Land Cover Data Program
Projection: State Plane 1927, Ohio North