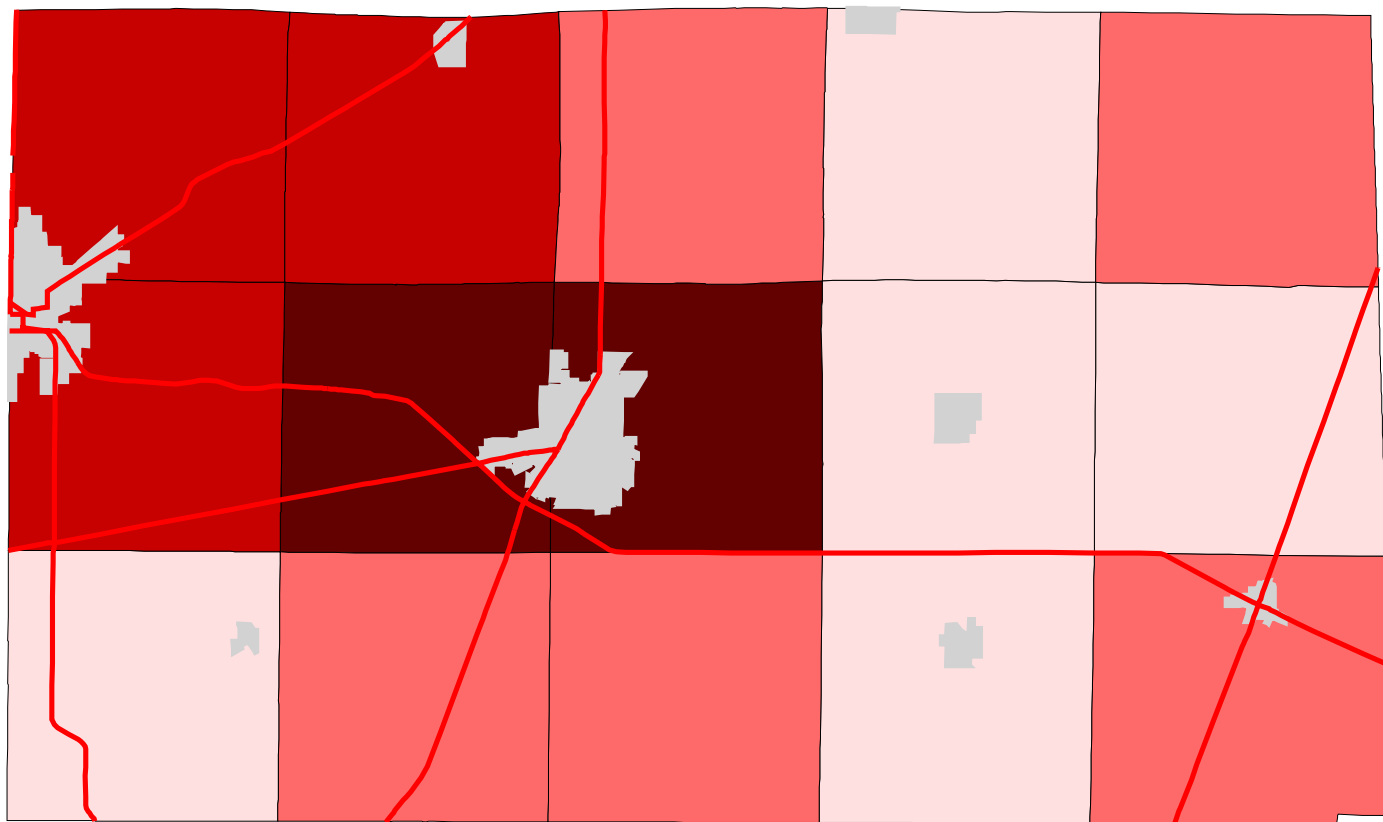






Map 7: Seneca County % Land In Urban (Early 1990's)

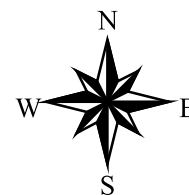


Legend:

-  Townships
-  Cities & Villages
-  Highways

% of Land in Urban

-  0 - 0.2
-  0.2 - 0.7
-  0.7 - 1.4
-  1.4 - 1.7



Prepared by:
Jason W. Reece
Dept. of AEDE
The Ohio State University
12.01.01