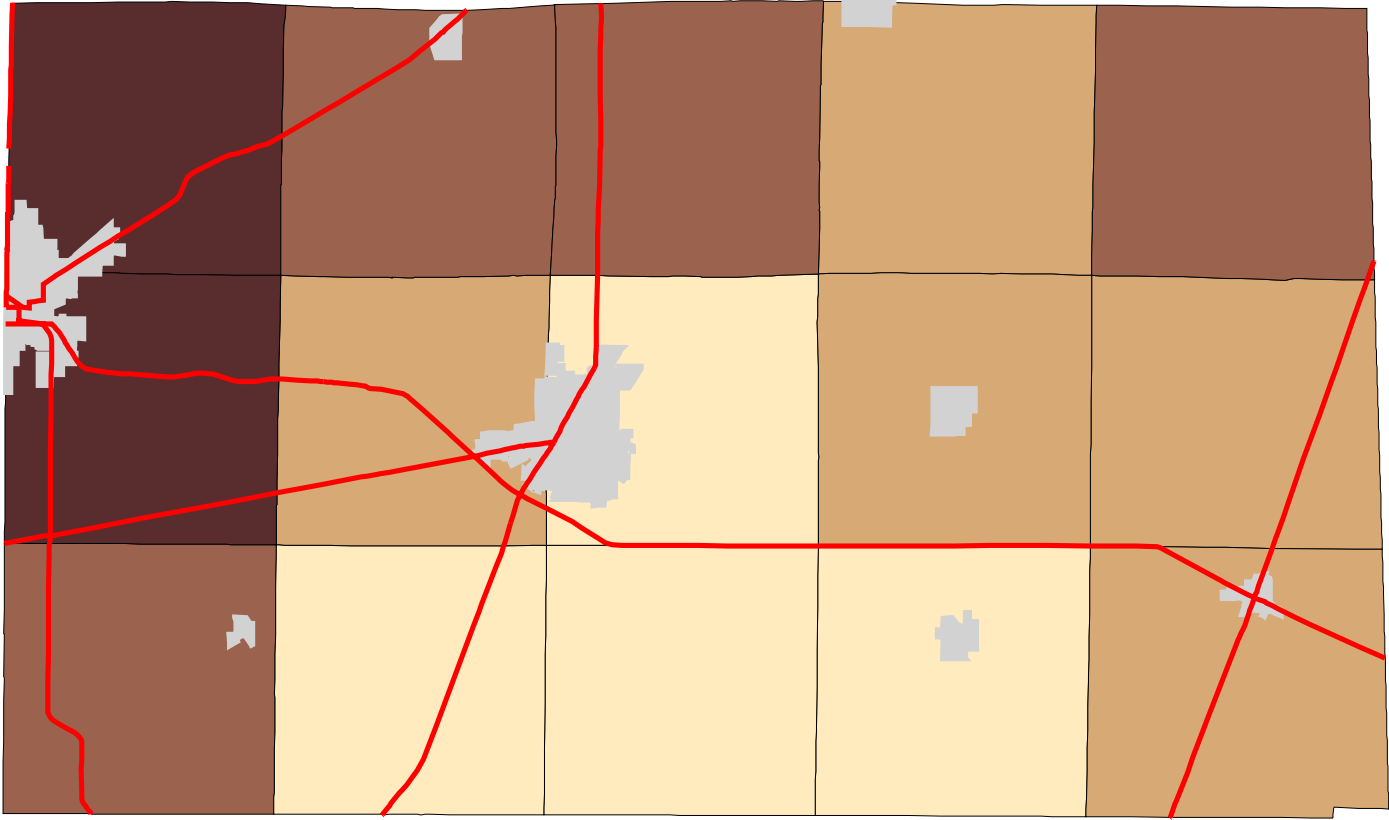


# Map 5: Seneca County % Land In Pasture (Early 1990's)



**Legend:**

- Townships
- Cities & Villages
- ↘ Highways

**% of Land in Pasture**

- 61 - 65
- 65 - 73
- 73 - 78
- 78 - 85



Prepared by:  
Jason W. Reece  
Dept. of AEDE  
The Ohio State University  
12.01.01

Source: Multi-Resolution Land Characteristics Consortium National Land Cover Data Program  
Projection: State Plane 1927, Ohio North