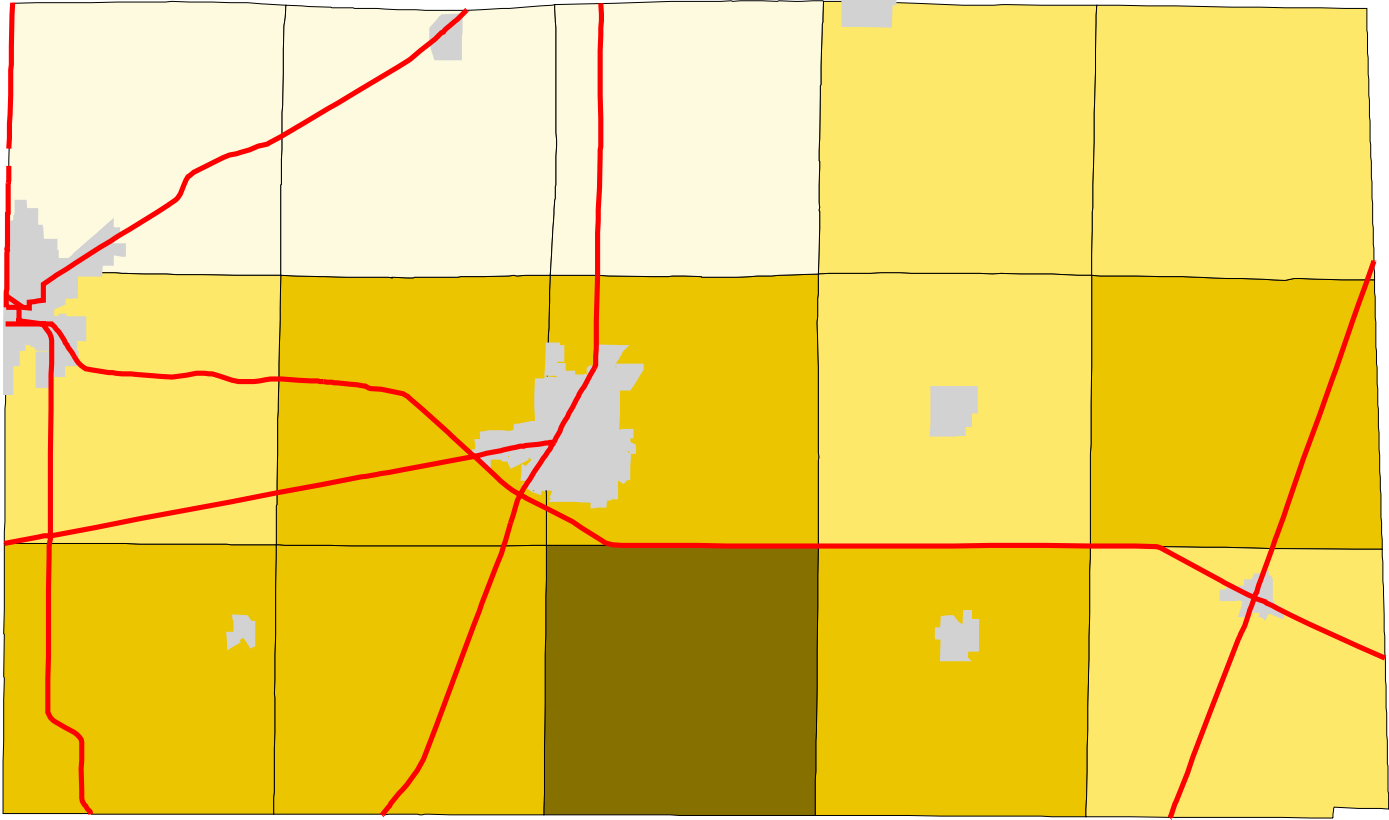


# Map 4: Seneca County % Land In Pasture (Early 1990's)



**Legend:**

- Townships
- Cities & Villages
- ↘ Highways

**% of Land in Pasture**

- 9 - 12
- 12 - 17
- 17 - 21
- 21 - 25



Prepared by:  
Jason W. Reece  
Dept. of AEDE  
The Ohio State University  
12.01.01

Source: Multi-Resolution Land Characteristics Consortium National Land Cover Data Program  
Projection: State Plane 1927, Ohio North