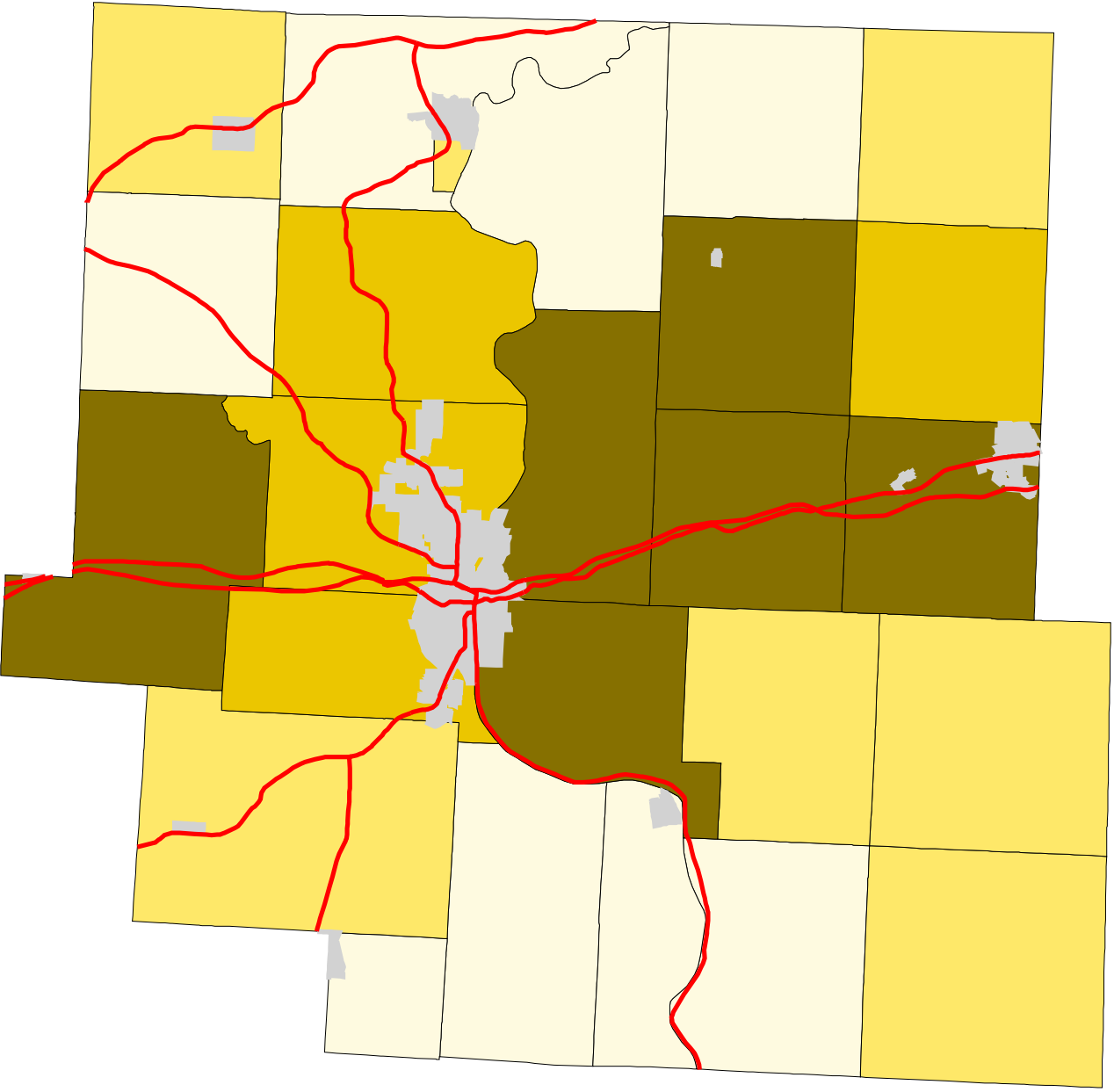


# Map 4: Muskingum County % Land In Pasture (Early 1990's)



- Legend:
- Townships
  - Cities & Villages
  - Highways

- % of Land in Pasture
- 16 - 28
  - 28 - 38
  - 38 - 42
  - 42 - 51



Prepared by:  
Jason W. Reece  
Dept. of AEDE  
The Ohio State University  
12.01.01

Source: Multi-Resolution Land Characteristics Consortium National Land Cover Data Program  
Projection: State Plane 1927, Ohio North