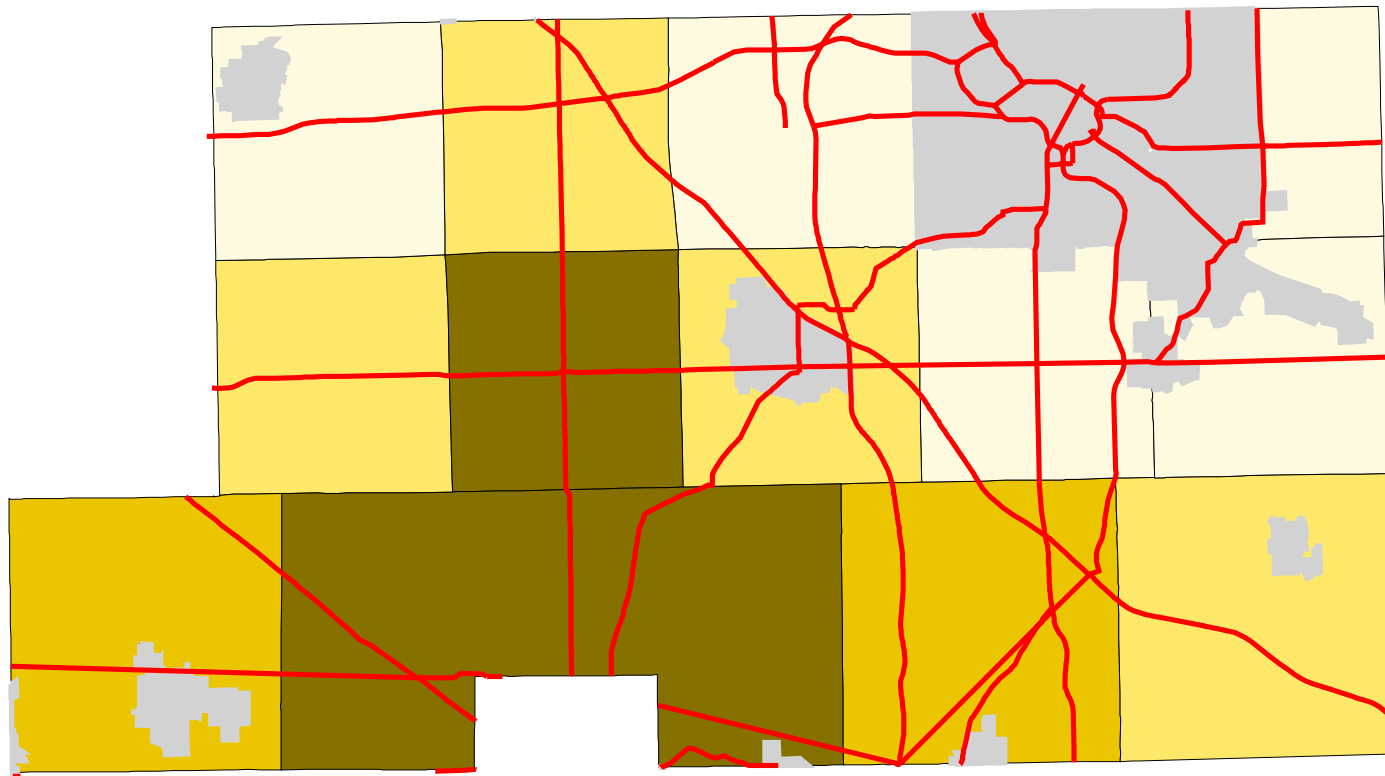









Map 4: Mahoning County % Land In Pasture (Early 1990's)



Legend:

-  Townships
-  Cities & Villages
-  Highways

% of Land in Pasture

-  6 - 25
-  25 - 30
-  30 - 32
-  32 - 44



Prepared by:
Jason W. Reece
Dept. of AEDE
The Ohio State University
12.01.01