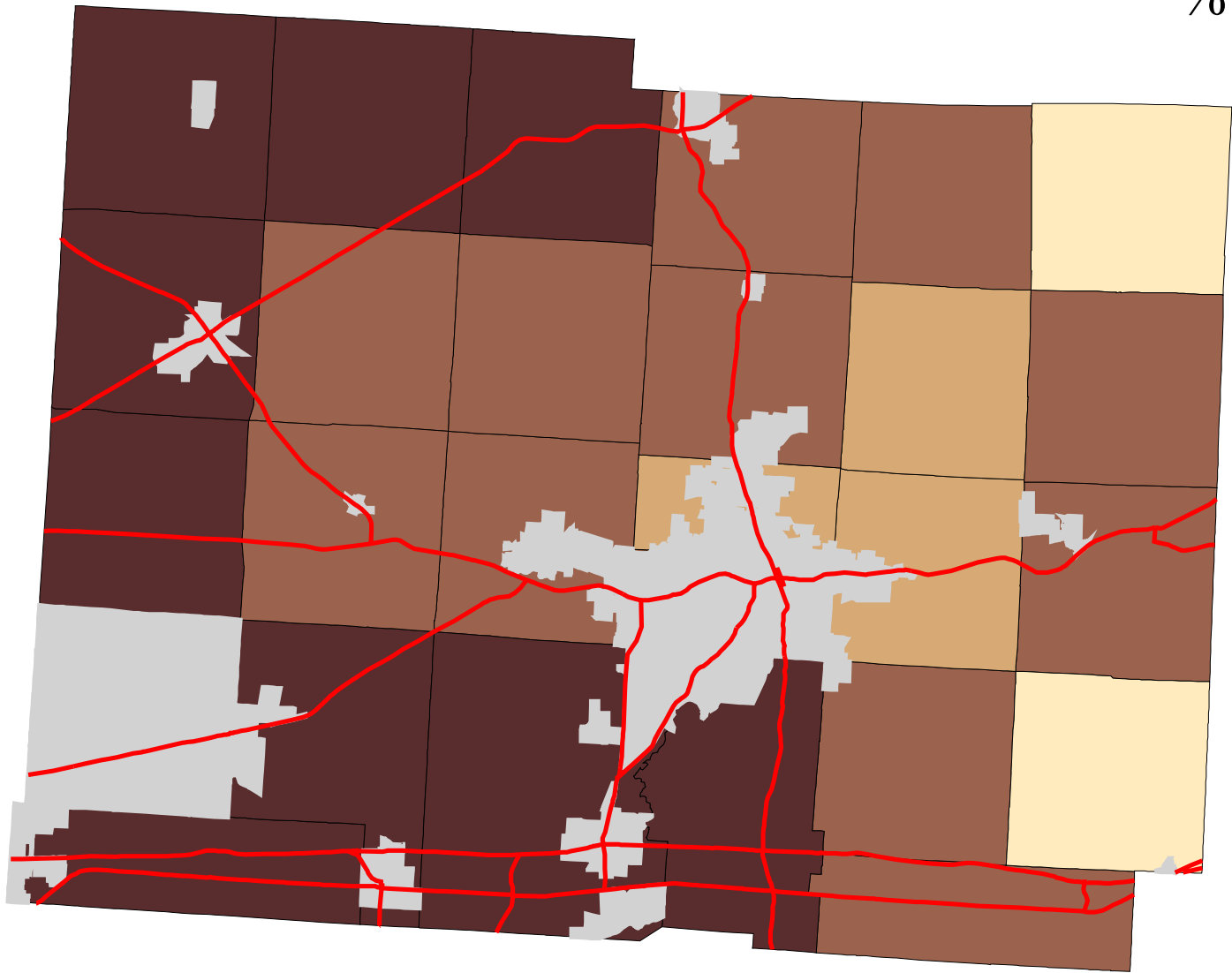


Map 5: Licking County % Land In Row Crops (Early 1990's)



- Legend:**
- Townships
 - Cities & Villages
 - ↘ Highways
- % of Land in Row Crops**
- 5 - 9
 - 9 - 10
 - 10 - 35
 - 35 - 74



Prepared by:
Jason W. Reece
Dept. of AEDE
The Ohio State University
12.01.01

Source: Multi-Resolution Land Characteristics Consortium National Land Cover Data Program
Projection: State Plane 1927, Ohio North