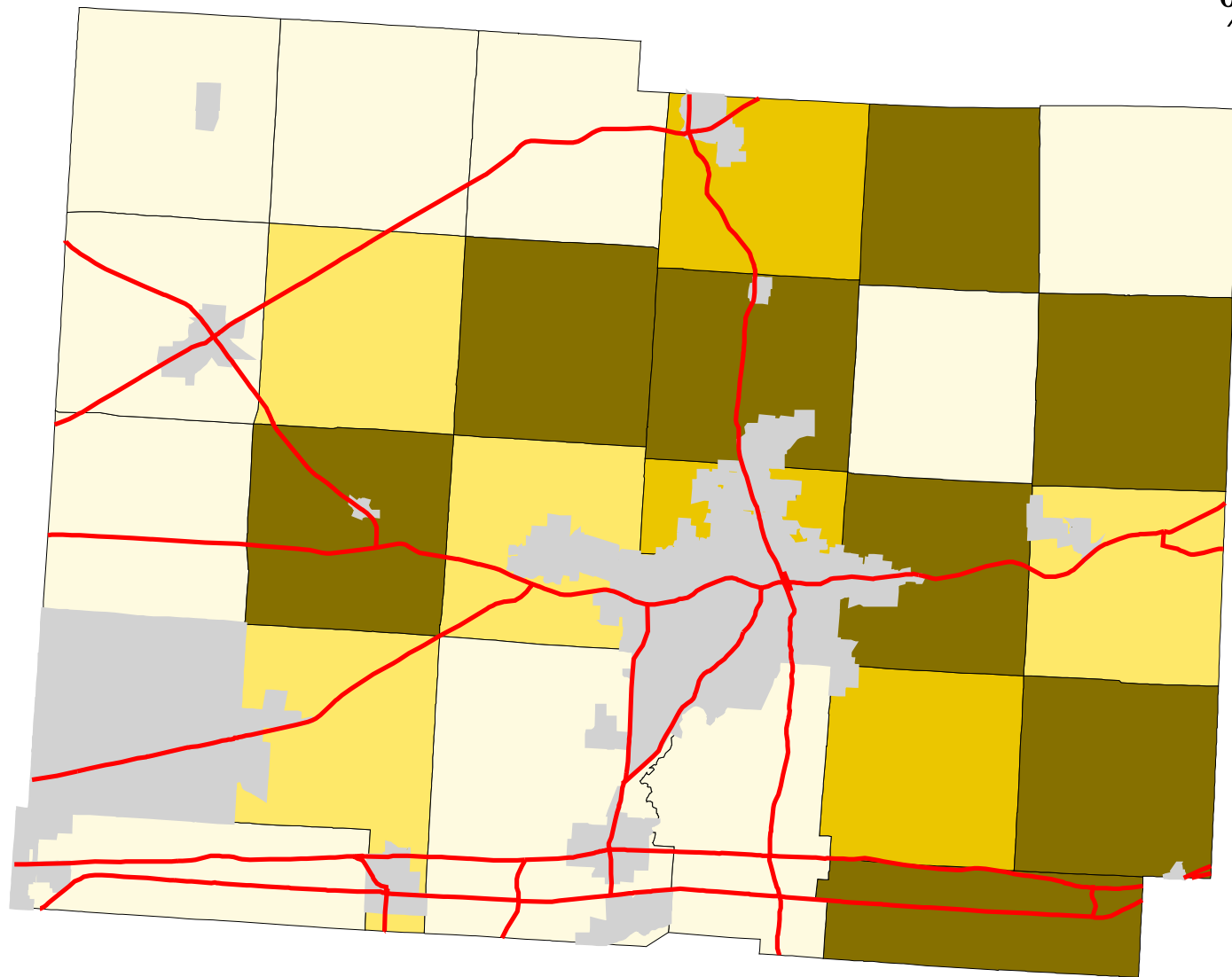




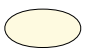



Map 4: Licking County % Land In Pasture (Early 1990's)

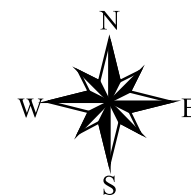


Legend:

-  Townships
-  Cities & Villages
-  Highways

% of Land in Pasture

-  17 - 28
-  28 - 31
-  31 - 33
-  33 - 43



Prepared by:
Jason W. Reece
Dept. of AEDE
The Ohio State University
12.01.01