
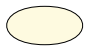





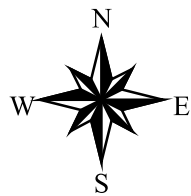
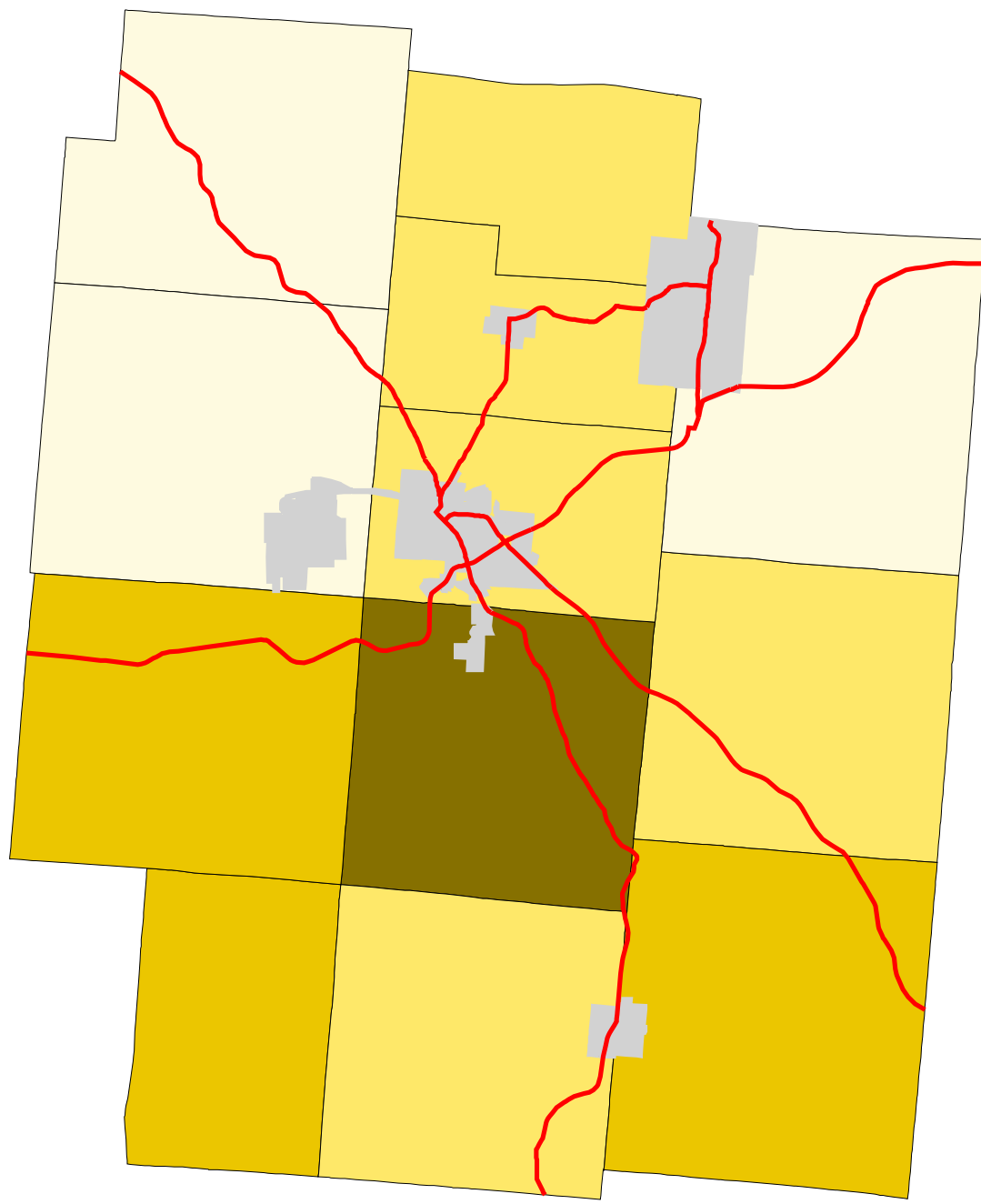
Map 4: Jackson County % Land In Pasture (Early 1990's)

Legend:

-  Townships
-  Cities & Villages
-  Highways

% of Land in Pasture

-  14 - 17
-  17 - 24
-  24 - 38
-  38 - 44



Prepared by:
Jason W. Reece
Dept. of AEDE
The Ohio State University
12.01.01

Source: Multi-Resolution Land Characteristics Consortium National Land Cover Data Program
Projection: State Plane 1927, Ohio North