





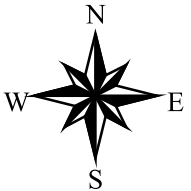
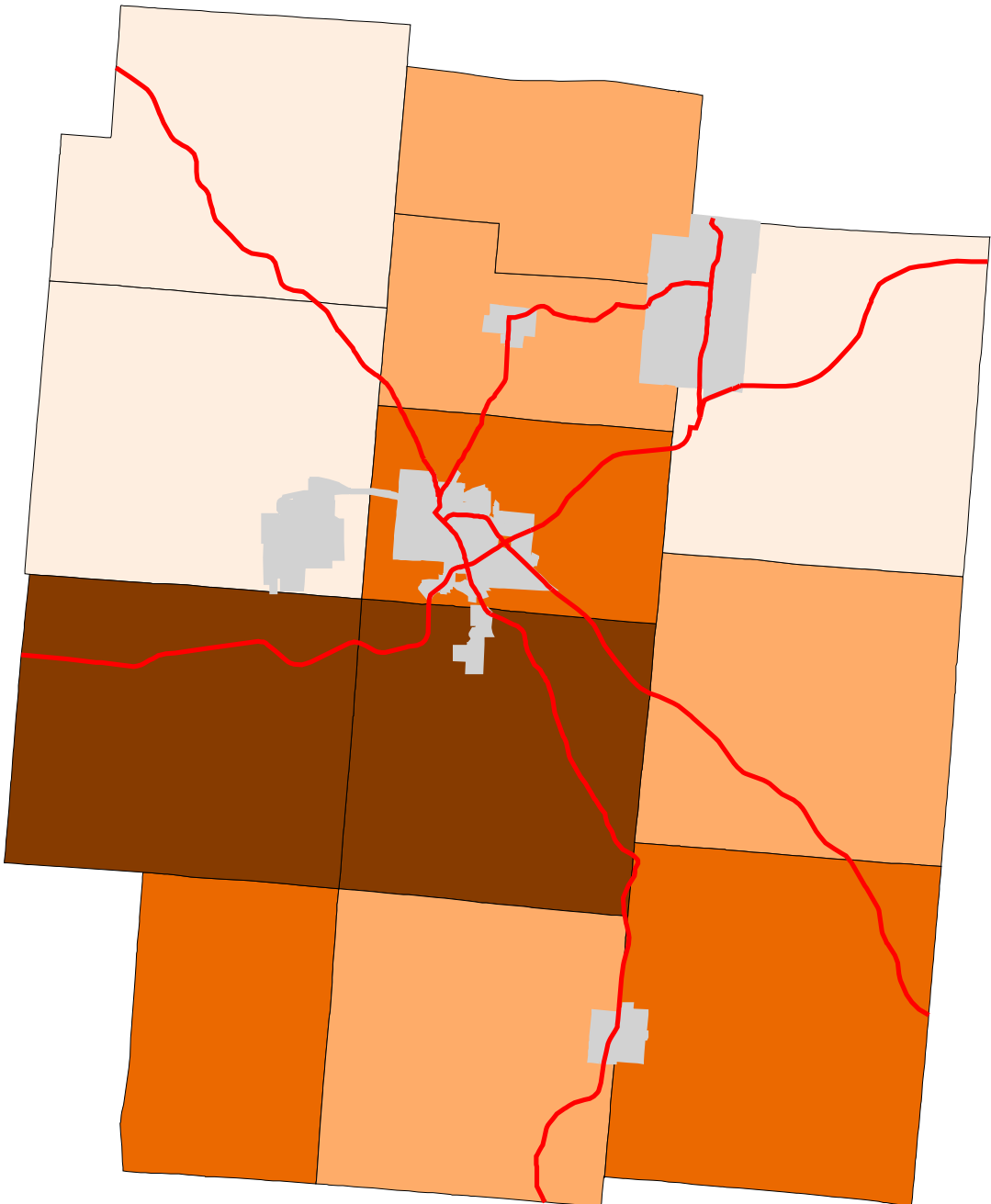
# Map 3: Jackson County % Land In Agriculture (Early 1990's)

Legend:

-  Townships
-  Cities & Villages
-  Highways

% of Land in  
Agriculture

-  20 - 21
-  21 - 29
-  29 - 43
-  43 - 53



Prepared by:  
Jason W. Reece  
Dept. of AEDE  
The Ohio State University  
12.01.01