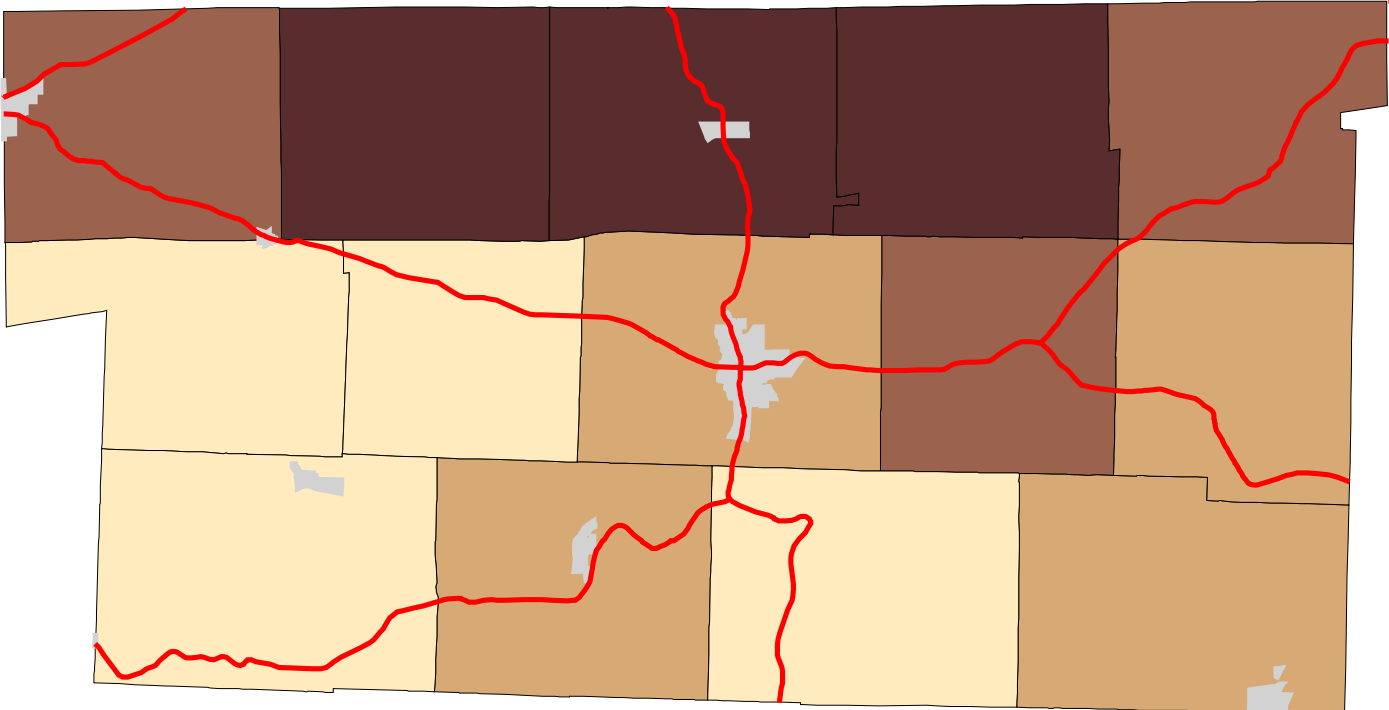


# Map 5: Holmes County % Land In Row Crops (Early 1990's)



**Legend:**

- Townships
- Cities & Villages
- ↗ Highways

**% of Land in Row Crops**

- 8 - 13
- 13 - 15
- 15 - 19
- 19 - 23



Prepared by:  
Jason W. Reece  
Dept. of AEDE  
The Ohio State University  
12.01.01

Source: Multi-Resolution Land Characteristics Consortium National Land Cover Data Program  
Projection: State Plane 1927, Ohio North