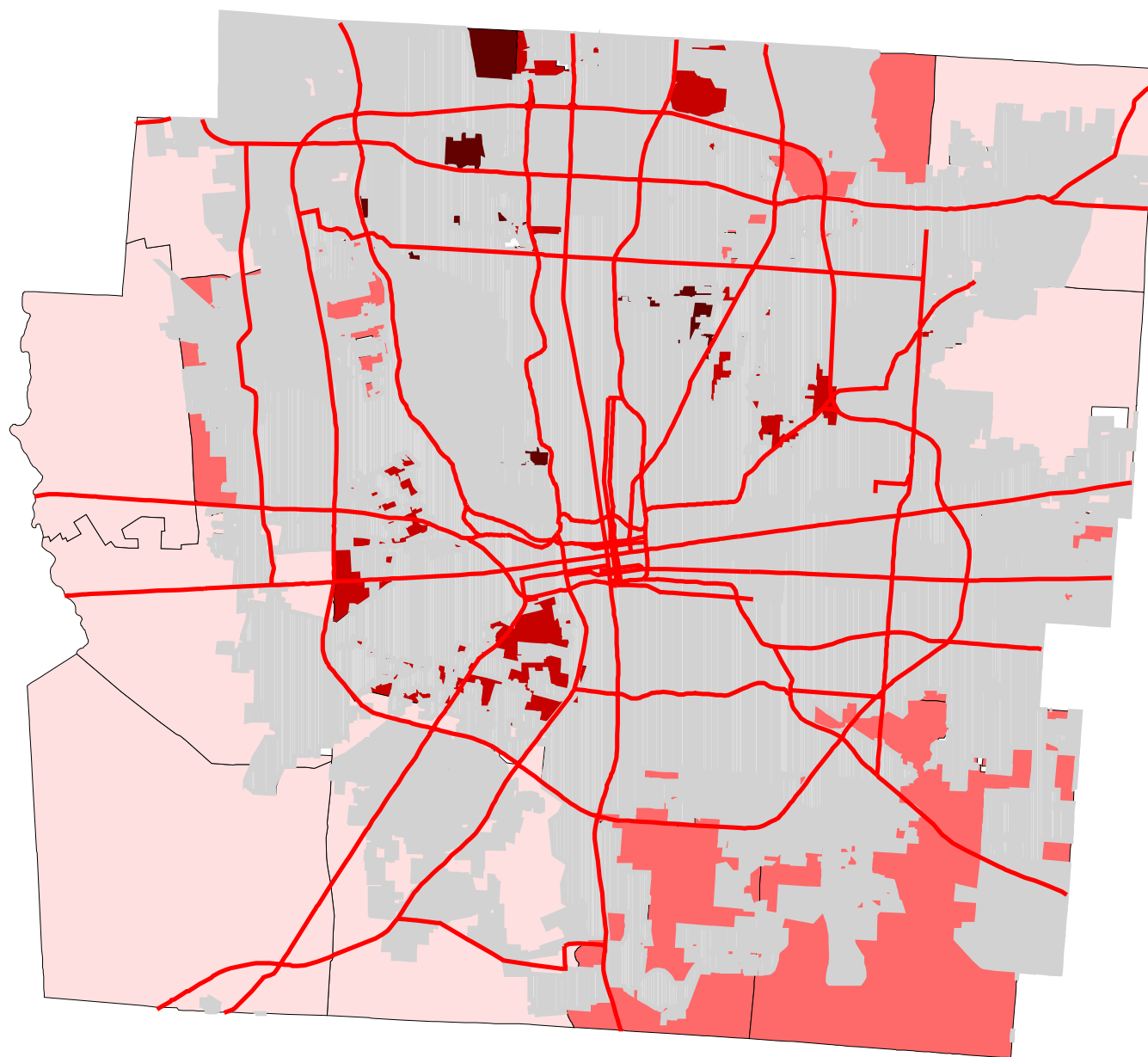


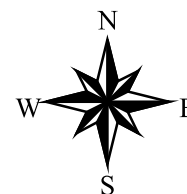
Map 7: Franklin County % Land In Urban (Early 1990's)



- Townships
- Cities & Villages
- ∩ Highways

% of Land in Urban

- 1.4 - 13.8
- 13.8 - 31.4
- 31.4 - 66.5
- 66.5 - 90.4



Prepared by:
Jason W. Reece
Dept. of AEDE
The Ohio State University
12.01.01