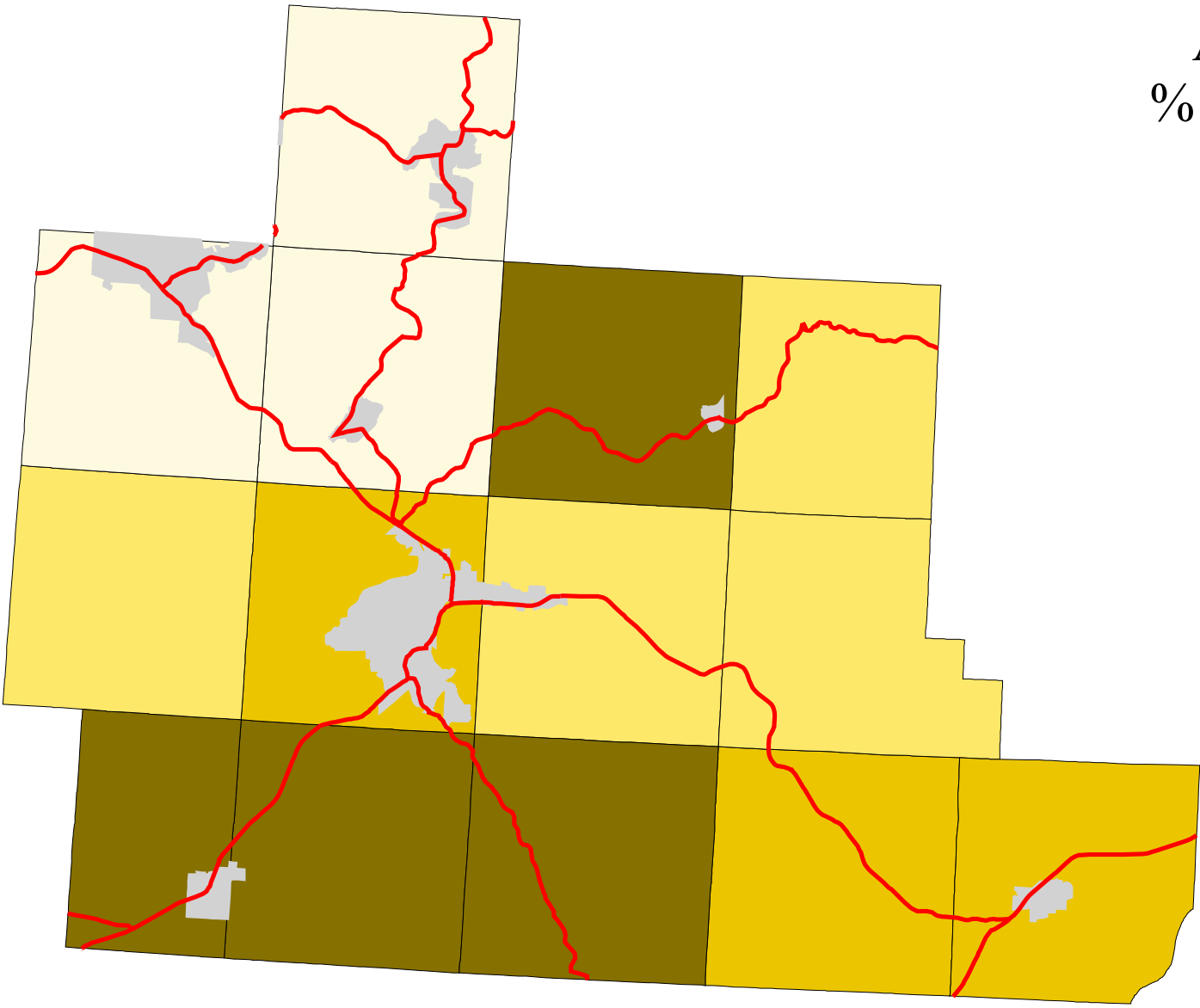
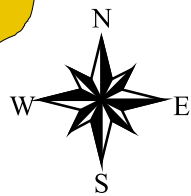


# Map 4: Athens County % Land In Pasture (Early 1990's)



- Legend:
- Townships
  - Cities & Villages
  - ↘ Highways
- % of Land in Pasture
- 8 - 13
  - 13 - 21
  - 21 - 31
  - 31 - 46



Prepared by:  
Jason W. Reece  
Dept. of AEDE  
The Ohio State University  
12.01.01

Source: Multi-Resolution Land Characteristics Consortium National Land Cover Data Program  
Projection: State Plane 1927, Ohio North